



Flat 9, Kerria Court Vervain Close, Churchdown, GL3 1LT

£800 Per Calendar Month

**TO LET**



- AVAILABLE FROM 5/8/26
- MODERN MAGNET KITCHEN
- FRIDGE FREEZER
- BUILT IN WARDROBE
- COUNCIL TAX BAND A
- GREY CARPETS
- INTEGRATED WASHING MACHINE
- ALLOCATED PARKING FOR 1 CAR
- EPCC
- TOP FLOOR APARTMENT

## THE PROPERTY

Chosen Estate Agents are delighted to bring you this beautifully presented TOP FLOOR one double bedroom apartment in the desirable Churchdown area. Kerria Court is situated in Vervain Close just off Innsworth Lane in Churchdown all but equidistant to Cheltenham and Gloucester alike.

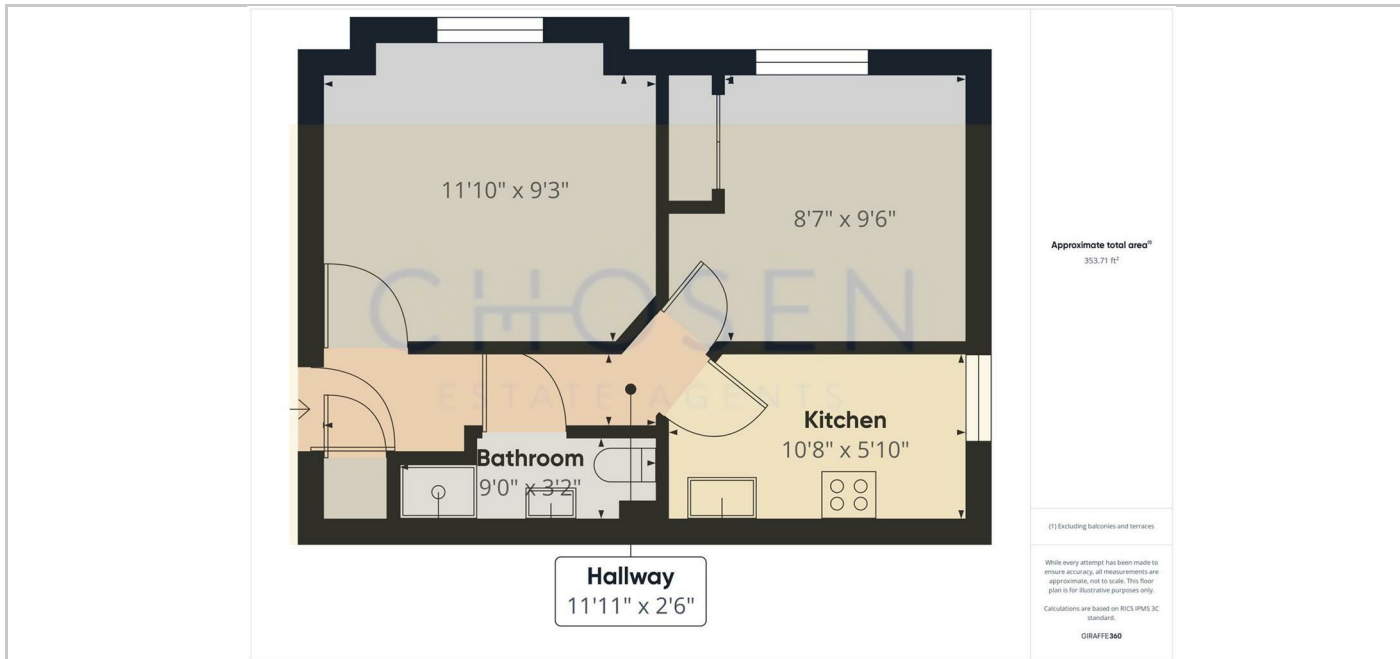
This apartment has undergone a refurbishment to include grey carpets throughout, a modern Magnet Kitchen to include appliances and been recently re-painted. The apartment offers lounge, one double bedroom with built in double wardrobe, kitchen with fridge freezer, integrated washing machine, new oven and hob included, bathroom with electric shower and allocated off road parking for up to 1 vehicle. The apartment also benefits from double-glazing and is warmed by electric heating. Sorry no smokers. No Pets due to head lease conditions. Available from start of August 2026

Holding Deposit: £190.00 based on 1 weeks' rent of asking price  
Security Deposit: £951.00 based on 5 weeks' rent of asking price  
Council Tax band: A Local Authority: Tewkesbury Borough

EPC Band: C

Electricity supply: Mains Gas Supply: No Gas Water supply: Mains Sewerage: Mains Heating: Electric Heating Mobile phone coverage: i.e EE, Vodafone, Three, O2

If satisfactory references are not obtained or you withdraw your application any financial loss to Chosen Estate Agents or the Landlord will be deducted from your holding deposit. If you or your guarantor provides information that is inaccurate, false, incomplete, or adverse credit not being disclosed then we may retain your holding deposit and reject your application.



## SITUATION

## Directions