



Bowfell Gardens, Choppington, NE62 5HA

Offers Over **£225,000**

Harpers POWERED BY **exp** UK
property people

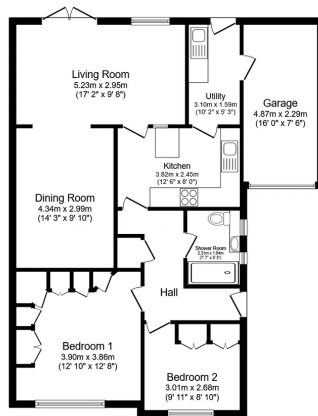
Bedrooms: 2 | Bathrooms: 1 | Receptions: 2

Discover this extended two-bedroom semi-detached bungalow, nestled within a peaceful cul-de-sac at the heart of the Wansbeck Estate. This home offers comfortable and flexible living, presented in excellent decorative order throughout, perfect for those seeking a tranquil lifestyle. Step inside to an impressive L-shaped living and dining room, providing a spacious and inviting area for relaxation and entertaining. The well-appointed modern kitchen/breakfast room offers a functional and appealing space for cooking and casual dining, complemented by a convenient utility room with direct access to the garden. The bungalow features two well-proportioned bedrooms, both benefiting from built-in Cavendish storage, ensuring ample space for belongings. A modern three-piece bathroom serves the bedrooms, completing the internal layout. Outside, the property boasts a substantial South-facing garden, offering a private and sunny outdoor space for enjoyment. Parking is well catered for with a double driveway and an integrated single garage, providing secure off-street solutions. This home is very well presented throughout and is offered with no onward chain.

- Semi-Detached Bungalow Within Peaceful Cul-De-Sac
- Two Well Proportioned Bedrooms With Built-In Cavendish Storage
- Modern Three-Piece Bathroom
- Well Appointed Modern Kitchen/Breakfast Room
- Impressive L-Shaped Living & Dining Room
- Substantial South Facing Garden
- Utility Room With Direct Garden Access
- Double Driveway & Integrated Single Garage
- Very Well Presented Throughout
- No Onward Chain







Floor Plan
Floor area 93.0 sq.m. (1,001 sq.ft.)

Total floor area: 93.0 sq.m. (1,001 sq.ft.)

This floor plan is for illustrative purposes only. It is not drawn to scale. Any measurements, floor areas (including any total floor area), openings and orientations are approximate. No details are guaranteed, they cannot be relied upon for any purpose and do not form any part of any agreement. No liability is taken for any error, omission or misstatement. A party must rely upon its own inspection(s). Powered by www.propertybox.co

Harpersexp UK



Harpers Property People

80 Windsor Gardens, Bedlington, NE22 5SY

07813 673 606

ali@harpersproperty.com

<https://harpersproperty.com>

Harpers POWERED BY **exp** TM **UK**
property people