



Elmfield Road, Peterborough
Guide Price £425,000 Freehold

**Sharman
Quinney**

Key Features



- Four reception rooms
- Enclosed rear garden
- Detached
- Close to amenities
- Off road parking

Description

Entrance Hall

Lounge/diner 7.82m x 4.06m (25'8" maximum x 13'4" maximum)

Dining Room/Office 3.04m x 3.83m (10' x 12'7")

Kitchen/breakfast Room 5.81m x 3.83m (19'1" x 12'7")

Utility Room 2.31m x 2.28m (7'7" x 7'6")

Family Room 4.74m x 2.38m (15'7" x 7'10")

2nd Lounge 3.83m x 3.20m (12'7" x 10'6")



Cloakroom Two piece suite

Landing

Bedroom One 3.45m x 3.17m (11'4" x 10'5" maximum)

Bedroom Two 3.32m x 2.92m (10'11" x 9'7" minimum)

Bedroom Three 2.38m x 2.84m (7'10" x 9'4")

Bedroom Four 2.54m x 2.33m (8'4" x 7'8")

Family Bathroom Three piece suite including corner bath

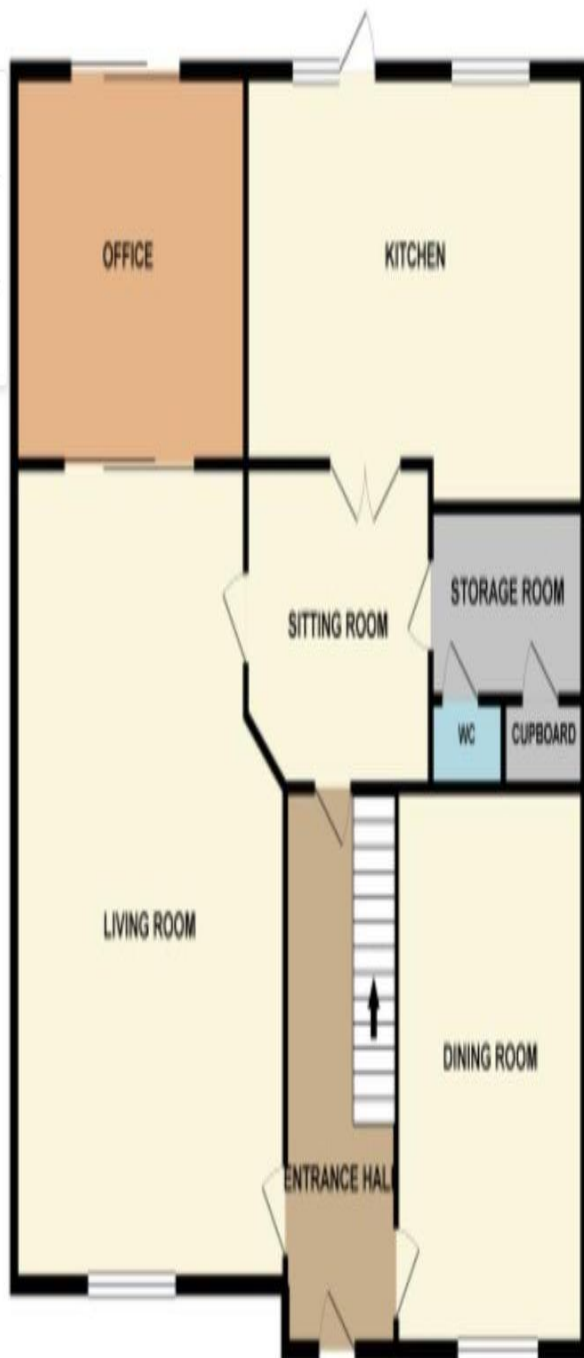
Shower room Three piece suite

Outside

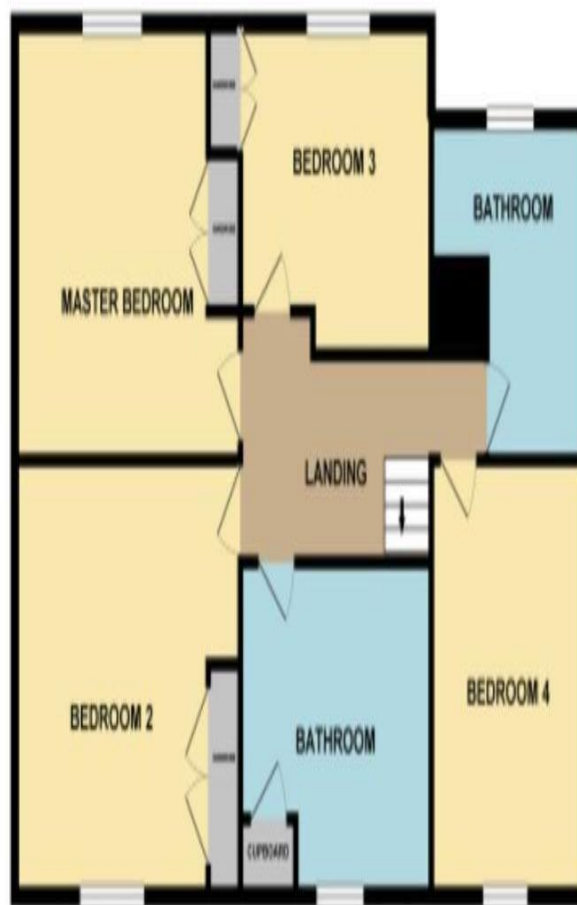
Double Garage 5.58m x 5.48m (18'4" x 18')



GROUND FLOOR



1ST FLOOR



To view this property call Sharman Quinney on:
01733 897896

Selling your property?

Contact us to arrange a **FREE** home valuation.

 01733 897896

 70 Albert Place, PETERBOROUGH,
Cambridgeshire, PE1 1DD

 peterborough@sharmanquinney.co.uk

 www.sharmanquinney.co.uk



 SCAN ME



Sharman Quinney Holdings Limited is registered in England and Wales under company number 4174227, Registered Office is Cumbria House, 16-20 Hockliffe Street, Leighton Buzzard, Bedfordshire, LU7 1GN. VAT Registration Number is 500 2481 05.

1: These particulars do not constitute part or all of an offer or contract. 2: The measurements indicated are supplied for guidance only and as such must be considered incorrect. 3: Potential buyers are advised to recheck the measurements before committing to any expense. 4: Sharman Quinney has not tested any apparatus, equipment, fixtures, fittings or services and it is the buyers interests to check the working condition of any appliances. 5: Sharman Quinney has not sought to verify the legal title of the property and buyers must obtain verification from their legal representative. 6: Intending purchasers will be asked to produce identification documentation at a later stage and we would ask your co-operation in order that there will be no delay in agreeing the sale. Ref: PTB202738 - 0014

