





7 Pendine Close

Barry, Barry

Spacious three bedroom end terrace needing modernisation, with large lounge/diner, fitted kitchen, three double bedrooms, gardens front and rear, double glazing, central heating and on-street parking.

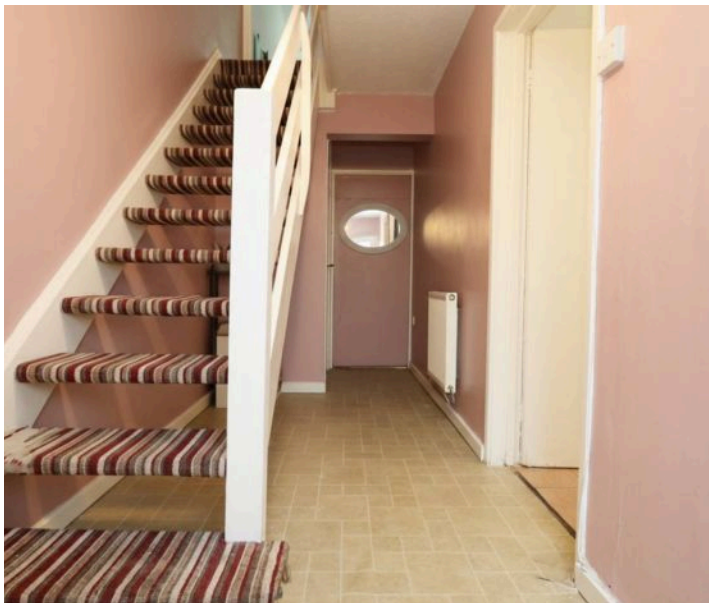
Council Tax band: B

Tenure: Freehold

EPC Energy Efficiency Rating: D

EPC Environmental Impact Rating: D

- IDEAL FIRST TIME BUY OR INVESTMENT
- MODERNISATION REQUIRED
- LARGE LOUNGE/DINER IDEAL FOR ENTERTAINING AND A SEPARATE FITTED KITCHEN
- THREE DOUBLE BEDROOMS
- FIRST FLOOR FAMILY BATHROOM
- FULLY ENCLOSED LOW MAINTENANCE REAR GARDEN
- EPC TBC





Hallway

Entrance into the property via a uPVC front door with opaque glazing into an entrance hallway. The hallway has vinyl tile effect flooring, smooth walls and a textured ceiling. There is a radiator and a carpeted staircase leading up to the first floor. Doors give access to two storage cupboards and the kitchen. There is ample storage space beneath the stairs.

Kitchen

11' 3" x 8' 8" (3.43m x 2.64m)

The kitchen is tiled with smooth walls and a smooth ceiling. The kitchen comprises a good range of matching eye and base level units with complimenting laminate work tops. There is a stainless steel sink inset with a stainless steel mixer tap ovetop and a tiled splashback. Integrated appliances include a single electric oven, a four ring electric hob, an extractor hood and a fridge/freezer. There is space and plumbing for a dishwasher and a washing machine as required. There is a front aspect window, a window looking through into the dining room and a wooden glazed door giving access to the dining room.

Dining Room

11' 4" x 8' 1" (3.45m x 2.46m)

The dining room has wood effect flooring, papered walls and a textured coved ceiling. There is ample space for a large dining table and chairs. Open to the lounge.

Lounge

14' 4" x 11' 8" (4.38m x 3.56m)

The lounge has wood effect flooring, papered walls and a textured coved ceiling. There is a large rear aspect window, a radiator and a feature electric fireplace with a wooden mantel. A door leads through to the rear lobby.





Rear Lobby

4' 1" x 3' 4" (1.24m x 1.02m)

The rear lobby has wood effect flooring, wood-panelled walls and a textured ceiling. There is a door giving access to a storage cupboard and a uPVC door with opaque glazing giving access to the garden.

Landing

A carpeted staircase leads to a carpeted landing. There is a radiator and doors giving access to three bedrooms, a family bathroom and two storage cupboards.

Bedroom One

13' 5" x 8' 6" (4.08m x 2.60m)

Bedroom one is carpeted with papered walls and a textured ceiling. There is a front aspect window, a radiator, a door giving access to the bathroom and ample fitted storage cupboards.

Bedroom Two

15' 10" x 8' 7" (4.82m x 2.62m)

Bedroom two is carpeted with papered walls and a textured coved ceiling. There is a rear aspect window, a radiator and ample fitted storage cupboards.

Bedroom Three

12' 6" x 8' 6" (3.80m x 2.60m)

Bedroom three is carpeted with smooth walls and a textured ceiling. There is a rear aspect window, a radiator, loft access and ample fitted storage cupboards.

Bathroom

8' 6" x 5' 6" (2.59m x 1.68m)

Vinyl tile effect flooring, full height wall tiling and a textured ceiling. There is a three piece white suite comprising a WC with a push button flush, a pedestal washbasin with a stainless steel mixer tap overtop and a bath with a thermostatic stainless steel shower inset and a folding glass shower screen.





There is also a rear aspect opaque window and a radiator.

Front Garden

A good size front garden laid to lawn with a path leading to the front door. Fully enclosed by wooden fencing and a pedestrian access gate.

Garden

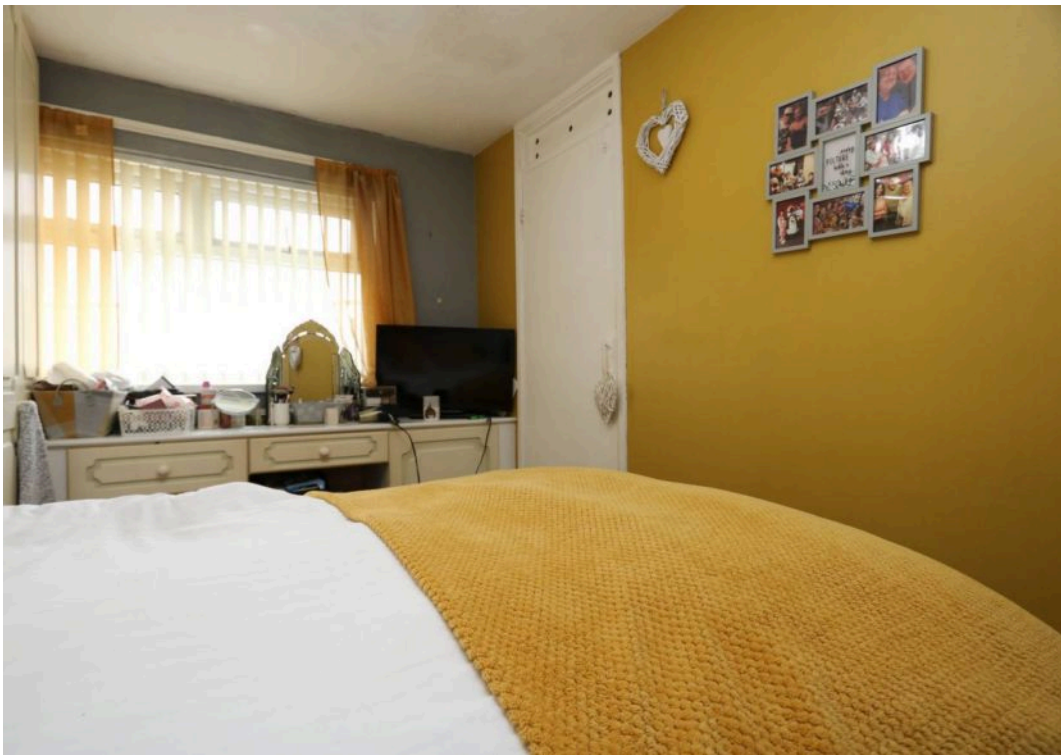
A fully enclosed, low maintenance rear garden laid to patio slabs.

ON STREET

1 Parking Space

Ample on-street parking available.









Chris Davies Estate Agents

Chris Davies Estate Agents, 24 High Street – CF62 7EA

01446 700007

barry@chris-davies.co.uk

www.chris-davies.co.uk/

HELPFUL INFORMATION – whilst we try to ensure our sales particulars are complete, accurate and reliable, if there is any point which is particularly important, please ask and we will be happy to check it, including specific information in respect of commuting links, surroundings, noise, views, or condition. For security purposes, applicants who wish to view will need to provide their name, address and telephone number. All measurements are approximate to the widest and longest points. Buyers are advised to instruct a solicitor to obtain verification of tenure and a surveyor to check that appliances, installations and services are in satisfactory condition.