



CHAPMAN SQUARE, SW19

£2,650 per month

Two bedrooms
Two bathrooms
Maisonette
Gated development
Energy rating: c

@marshandparsons
marshandparsons.co.uk

MARSH &
PARSONS



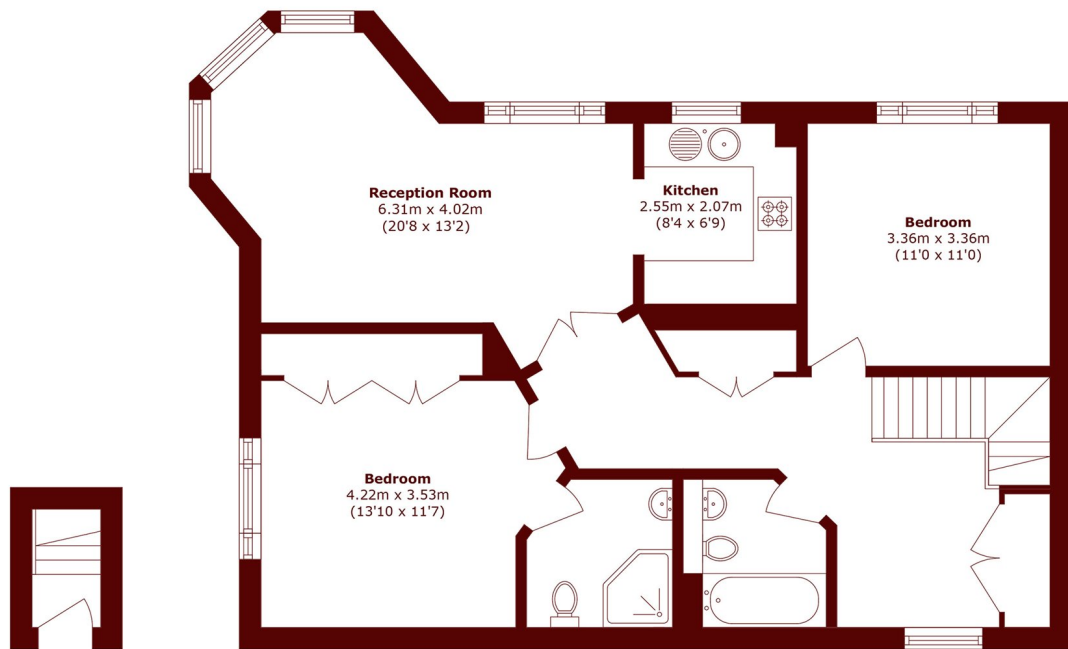
ABOUT THE PROPERTY

A two bedroom maisonette offers a spacious lounge, fitted kitchen, study area in the hallway, one family bathroom, master with fitted wardrobes and an en-suite shower room. This popular gated development also benefits from extensive communal gardens, off street allocated parking space and a 24 hour porter service.

The property is located in a gated development opposite Wimbledon Common.



STEP INSIDE CHAPMAN SQUARE



Ground Floor

First Floor

Total area (approx.): 81.6 sq. m (878.3 sq. ft)

Wimbledon
020 8879 6661

Energy Rating: C We aim to make our particulars both accurate and reliable. However, they are not guaranteed; nor do they form part of an offer or contract. If you require clarification on any points then please contact us, especially if you're traveling some distance to view. Please note that appliances and heating systems have not been tested and therefore no warranties can be given as to their good working order

**MARSH &
PARSONS**