



Abbey Road, NW8 £1,150,000

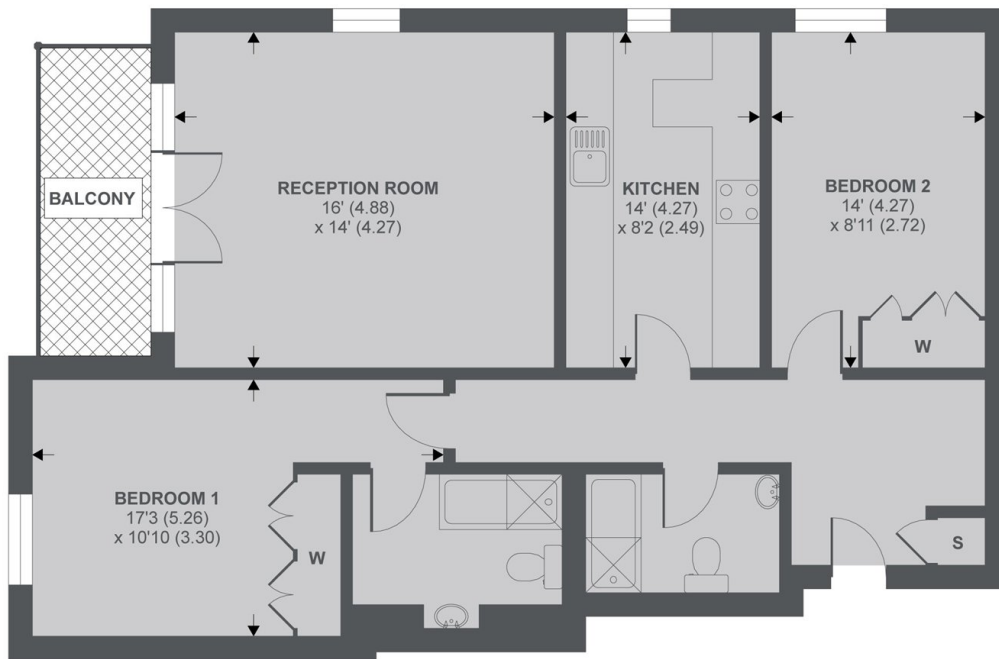
Positioned on the eleventh floor of a sought after 24 hour portered block, this spacious two double bedroom apartment enjoys far-reaching views and excellent natural light. The property features a balcony, separate kitchen, two bathrooms, underground parking, and access to a communal indoor swimming pool.

Located in a prime St John's Wood setting, the property is moments from St John's Wood High Street with its selection of cafés, restaurants, and boutiques. Regent's Park and Lord's Cricket Ground are both nearby. Transport links include St John's Wood underground station (Jubilee line).

Features

- Eleventh Floor
- Porter
- Swimming Pool
- Two Bedrooms
- Balcony
- Chain Free

Abbey Road, London, NW8



11th Floor

APPROX FLOOR AREA 890 SQ.FT 82.6 SQ.M
Copyright nichecom.co.uk 2019 REF : 547490