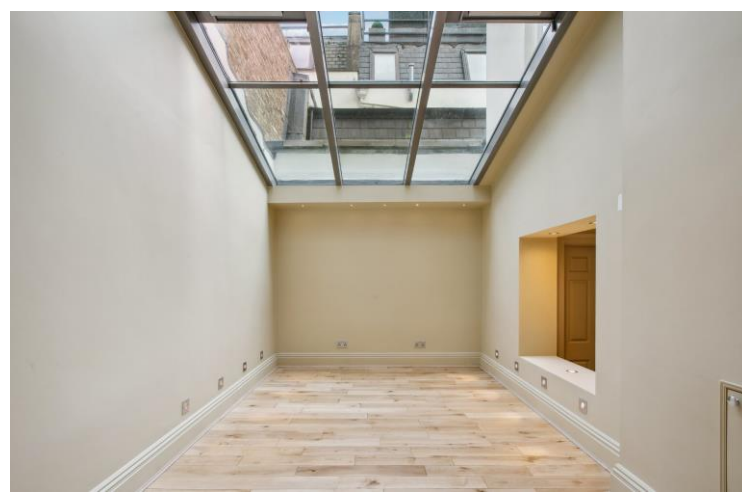




Albion Street
Hyde Park, W2

CHESTERTONS





Now available for immediate rental, this impeccably restored Grade II listed Georgian townhouse is offered unfurnished. This outstanding end-of-terrace property spans approximately 3,064 sq ft of luxurious living space, masterfully combining historic elegance with modern refinement. The home features four generously sized bedrooms, each with its own en-suite bathroom, alongside an impressive first-floor drawing room, a large open-plan kitchen and breakfast area, a formal dining room, a study, a cinema room, and a guest cloakroom.

Located on the highly regarded Albion Street, this remarkable Georgian terrace enjoys a prime position between the chic boutiques and cafés of Connaught Street to the north, and the serene, expansive greenery of Hyde Park to the south. The property is bathed in natural light, with thoughtfully designed interiors that provide an ideal backdrop for both tranquil living and entertaining. With its graceful proportions and outstanding craftsmanship, this is an extraordinary opportunity to reside in one of London's most coveted locations.

- Available now
- Newly refurbished
- Four bedrooms and four bathrooms
- Unfurnished
- Large open plan kitchen
- Cinema room

£15,000 pcm

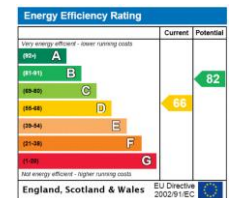
Additional tenant charges apply (fees apply to non-AST tenancies only)

Tenancy Agreement Fee: £300

References per Tenant/Guarantor: £60

Inventory check (approx. £100 – £250 inc. VAT)

chestertons.co.uk/property-to-rent/applicable-fees



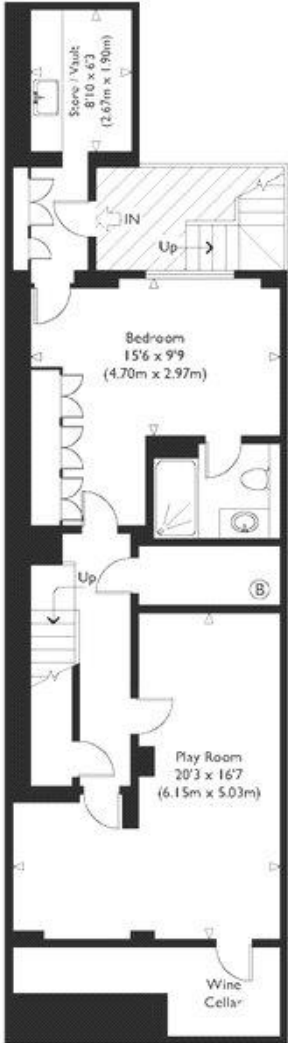
Minimum Term: 12 months
Deposit Required: Five weeks
Local Authority: City of Westminster
Council Tax Band: H
EPC Rating: D
Unfurnished

Chestertons Hyde Park & Marylebone Lettings

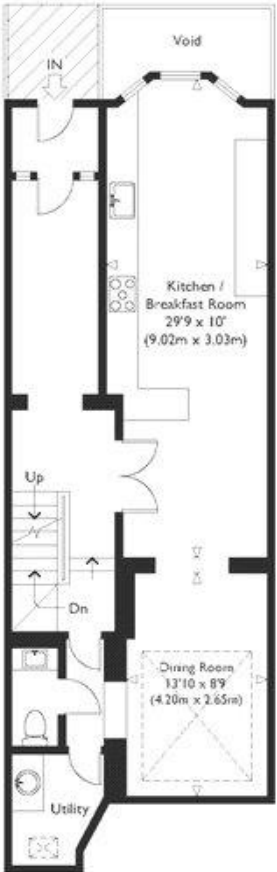
40 Connaught Street
 Hyde Park & Marylebone
 London
 W2 2AB

hydeparklettingsusers@chestertons.co.uk
 02072985950

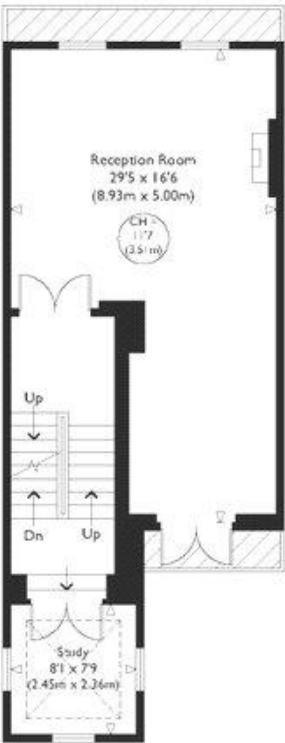
Albion Street



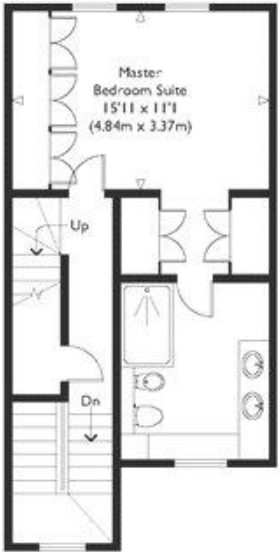
Lower-Ground Floor



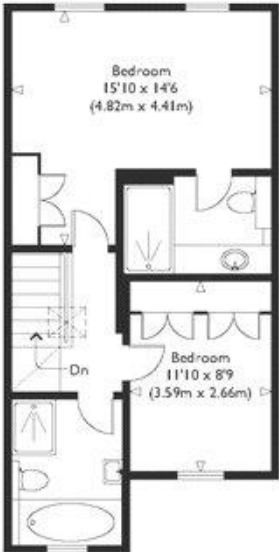
Ground Floor



First Floor



Second Floor



Third Floor

Approximate Gross Internal Floor Area : 3064 sq ft / 284.7 sq m
 Illustration for identification purposes only, measurements are approximate, not to scale.

Chesterton UK Services Limited trading as Chestertons for themselves and for the vendor of this property whose agents they are, give notice that (i) these particulars do not constitute any part of an offer or contract, (ii) all statements contained within these particulars are made without responsibility on the part of Chestertons or the vendor, (iii) whilst made in good faith, none of the statements contained within these particulars are to be relied upon as a statement or representation of fact, (iv) any intending purchasers must satisfy themselves by inspection or otherwise as to the correctness of each of the statements contained within these particulars, (v) the vendor does not make or give either Chestertons or any person in their employment any authority to make or give representation or warranty whatsoever in relation to this property. Wide angle lenses may be used. ©Copyright Chestertons | Chesterton Global Ltd | Registered Office 40 Connaught Street, Hyde Park, London W2 2AB Registered Company Number 05334580.

