



# Sedan Close

Salford



In Excess of £220,000

# Sedan Close

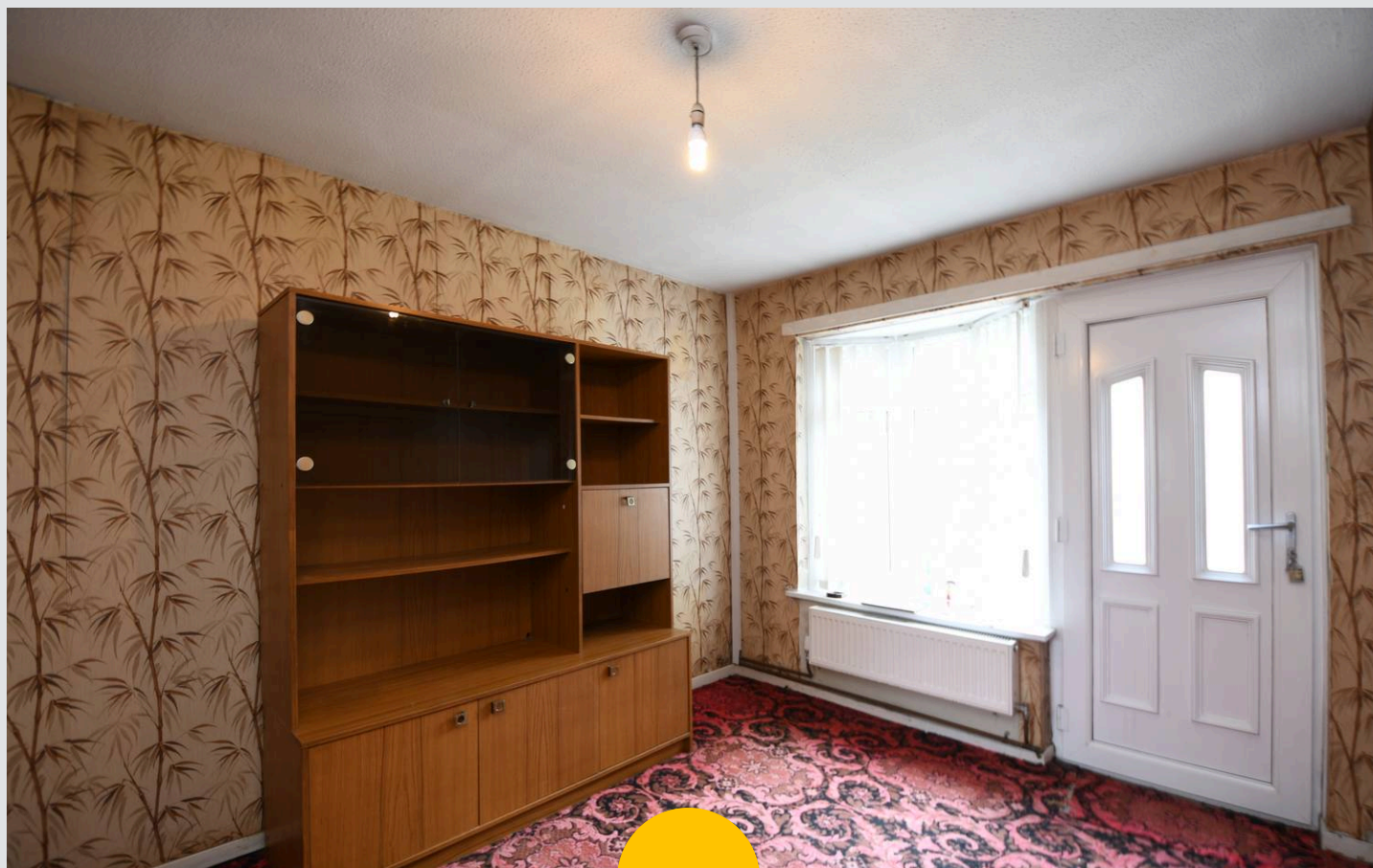
Salford

**\*\*\*CHAIN FREE Three Bedroom Family Home Situated within Walking Distance of Salford Quays and Media City!\*\*\***

Council Tax band: A

Tenure: Freehold

- Spacious three bedroom terraced property coming to the market CHAIN FREE!
- Within Walking Distance of Salford Quays and Media City, which is Host to a Fine Array of Bars, Shops and Restaurants
- Three bedrooms
- Fitted kitchen and dining room separated via archway
- Family lounge
- Bathroom suite and separate toilet
- Generous sized front and rear gardens
- Perfect opportunity to put your own stamp on a property!
- Great first time buy or family home
- Plenty of Storage Throughout



HILLS



**Entrance Hallway**

8' 2" x 9' 1" (2.49m x 2.77m)

**Lounge**

13' 3" x 10' 7" (4.04m x 3.22m)

**Dining Room**

9' 8" x 12' 10" (2.94m x 3.91m)

**Kitchen**

11' 0" x 8' 10" (3.36m x 2.70m)

**Landing**

**Bathroom**

6' 1" x 5' 11" (1.86m x 1.80m)

**W.C.**

3' 5" x 4' 7" (1.04m x 1.39m)

**Bedroom One**

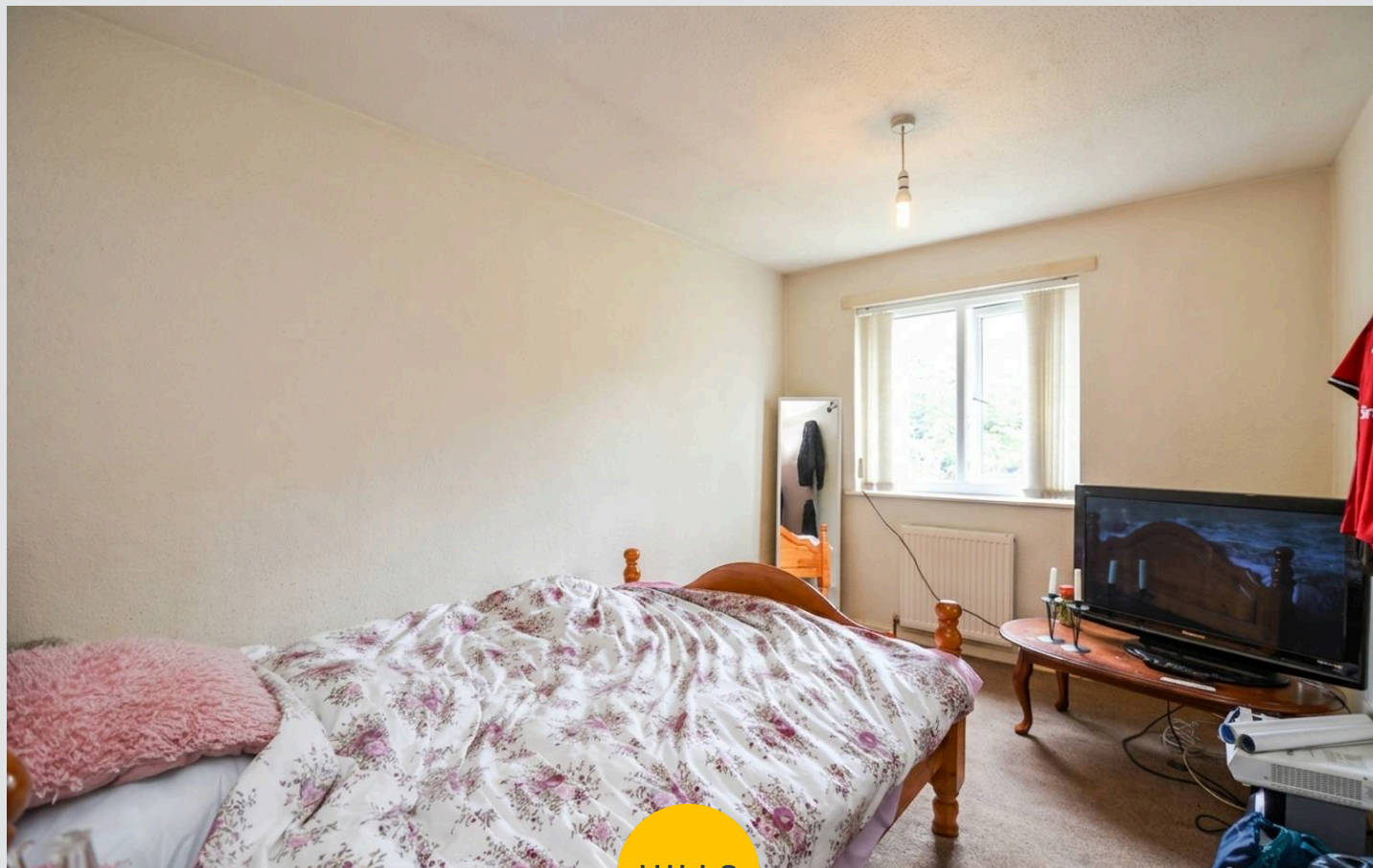
12' 11" x 8' 8" (3.94m x 2.65m)

**Bedroom Two**

15' 7" x 5' 7" (4.74m x 1.71m)

**Bedroom Three**

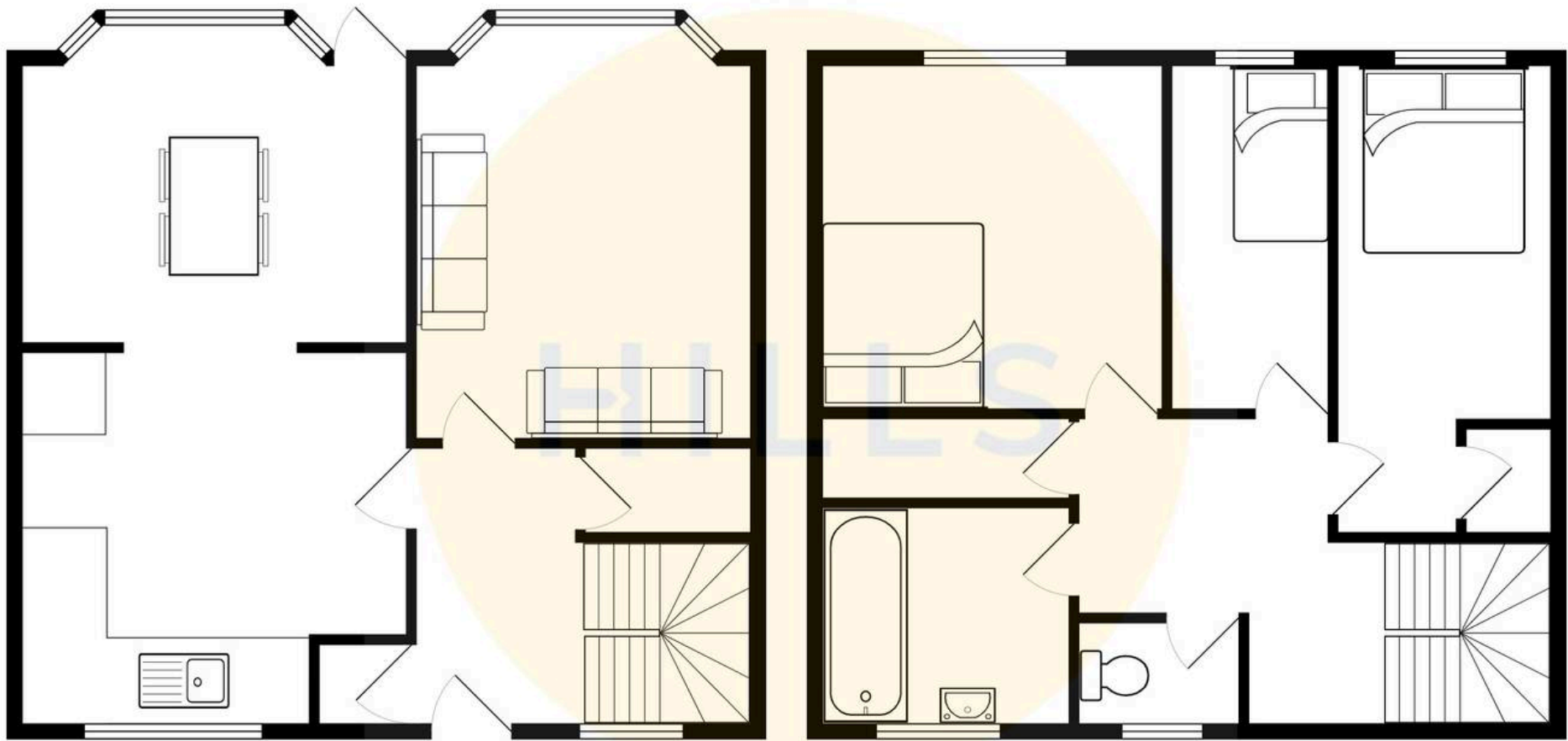
13' 4" x 5' 1" (4.06m x 1.54m)





HILLS







## Hills | Salfords Estate Agent

Hills Residential, Sentinel House Albert Street – M30 0SS

0161 707 4900

[sales@hills.agency](mailto:sales@hills.agency)

[www.hills.agency/](http://www.hills.agency/)



By law, we are required to conduct anti-money laundering checks on all potential buyers and sellers. In line with HMRC guidelines, our trusted partner, Coadjute, will securely manage these checks on our behalf. A non-refundable fee of £45 + VAT per person will apply, and Coadjute will handle the payment. Once an offer is accepted, Coadjute will send a secure link for you to complete the biometric checks. These checks must be completed before we can send the memorandum of sale to all parties. PLEASE NOTE: The Agent has not tested any equipment, fixtures, fittings or services so cannot verify that they are in working order or fit for the purpose. References to the properties tenure are based on information supplied by the seller. You are advised to check the availability of this property before travelling any distance to view. Every effort has been made to ensure these particulars are correct and not misleading but their accuracy is not guaranteed nor do they form part of any contract.