

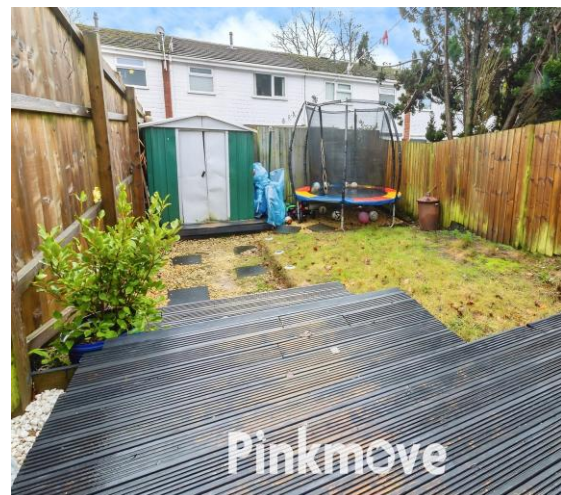


Pinkmove

Kingsland Walk

Guide price £180,000 - £190,000

- Guide Price: £180,000 - £190,000
- Three Bedrooms
- Family Bathroom
- Utility Room
- Front and Rear Gardens
- Communal Car Park
- Close to Shops, Schools and Leisure Facilities
- Close Proximity to Cwmbran Town Centre and Excellent Transport Links
- EPC Rating: C



3 1 1

Pinkmove

01633 746088
team@pinkmove.co.uk



About the property

This well-presented three-bedroom mid-terrace home on Kingsland Walk offers comfortable living in a convenient Cwmbran location.

The ground floor features an open-plan kitchen and dining area to the front, with direct access to a practical utility room. To the rear, a bright lounge opens onto an enclosed garden that includes a decking area and a section of lawn, creating an ideal space for relaxation or entertaining. The front of the property also benefits from an enclosed patio garden, adding further outdoor versatility.

Upstairs, you'll find three adaptable bedrooms along with a modern family bathroom, providing ample space for a variety of lifestyles. Parking is available in the nearby communal car park for added convenience.

Kingsland Walk sits within the well-connected community of St Dials, offering easy access to a wide range of shops and amenities. Cwmbran Centre, located nearby, features major retailers and supermarkets, as well as leisure facilities and green spaces. Families will appreciate the range of schools in and around Cwmbran, including Cwmbran High School, Croesyceiliog School and Llantarnam Community Primary, all shown within the local area map of Cwmbran. Transport connections are excellent, with Cwmbran's central bus station situated within the main shopping district, along with the train station and easy access to the M4.

Overall, this property combines comfortable living spaces with excellent local amenities, making it a perfect all-rounder.





Accommodation

Kitchen/Diner

19' 5" x 11' (5.92m x 3.35m)
Max Measurements

Lounge

11' 5" x 17' 2" (3.48m x 5.23m)

Utility

4' 8" x 7' 9" (1.42m x 2.36m)

Bedroom 1

16' 2" x 9' 3" (4.93m x 2.82m)

Bedroom 2

9' 1" x 10' 10" (2.77m x 3.30m)

Bedroom 3

8' 5" x 7' 8" (2.57m x 2.34m)

Bathroom

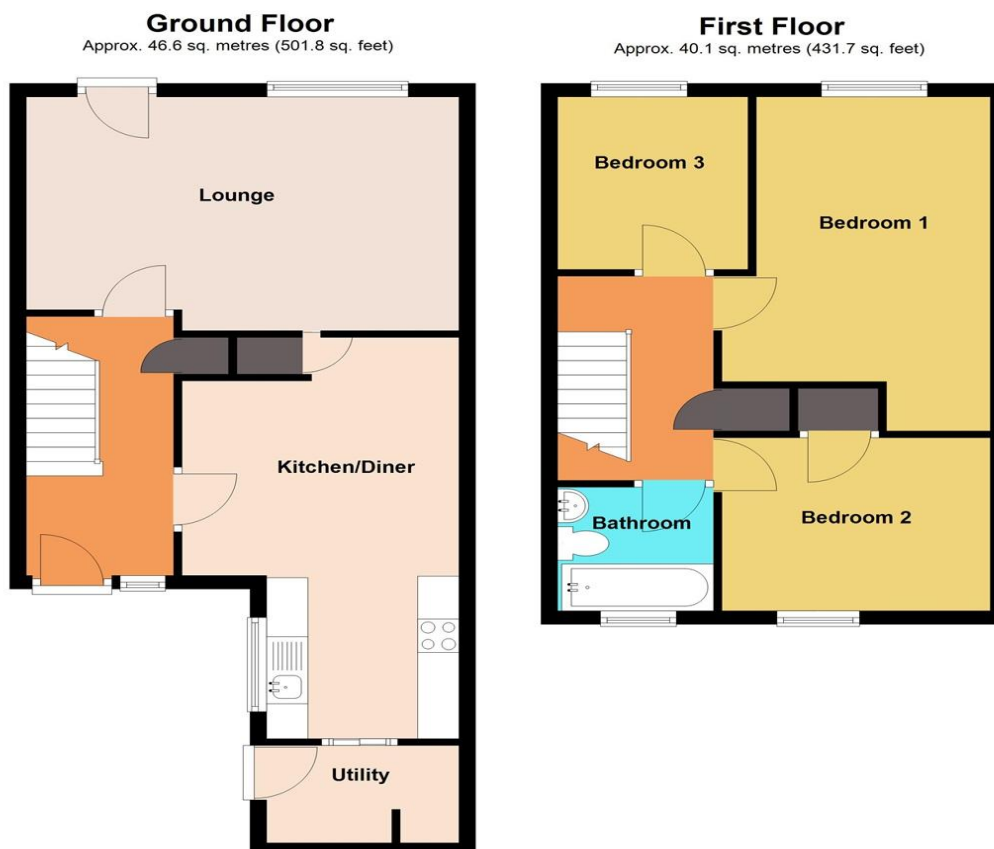
6' 1" x 6' 2" (1.85m x 1.88m)

01633 746088

team@pinkmove.co.uk

Pinkmove

Floorplan



Total area: approx. 86.7 sq. metres (933.5 sq. feet)
8 Kingsland Walk

Important Information

Note while we endeavour to make our sales details accurate and reliable, if there is any point which is of particular interest to you, please contact the office and we will be pleased to confirm the position for you. We have not personally tested any apparatus, equipment, fixtures, fittings or services and cannot verify they are in working order or fit for their purposes. Nothing in these particulars is intended to indicate that carpets or curtains, furnishings or fittings, electrical goods (whether wired or not). Gas fires or light fittings or any other fixtures not expressly included form part of the property offered for sale. This computer generated Floorplan, if applicable, is intended as a general guide to the layout and design of the property. It is not to scale and should not be relied upon for dimensions. Tenure: We cannot confirm the tenure of the property as we have not had access to the legal documents. The buyer is advised to obtain verification from their solicitor or surveyor.

Peter Alan Limited is registered in England and Wales under company number 2073153, Registered Office is Cumbria House, 16-20 Hockliffe Street, Leighton Buzzard, Bedfordshire, LU7 1GN. VAT Registration Number is 500 2481 05. For activities relating to regulated mortgages and non-investment insurance contracts, Peter Alan Limited is an appointed representative of Connells Limited which is authorised and regulated by the Financial Conduct Authority. Connells Limited's Financial Services Register number is 302221. Most buy-to-let

