

105 Harlow Crescent, HARROGATE

£425,000



**YOUR AWARD
WINNING AGENT**

#DARINGTOBEDIFFERENT



An extended and beautifully presented three-bedroom semi-detached family home, occupying an attractive corner position within this popular residential location.

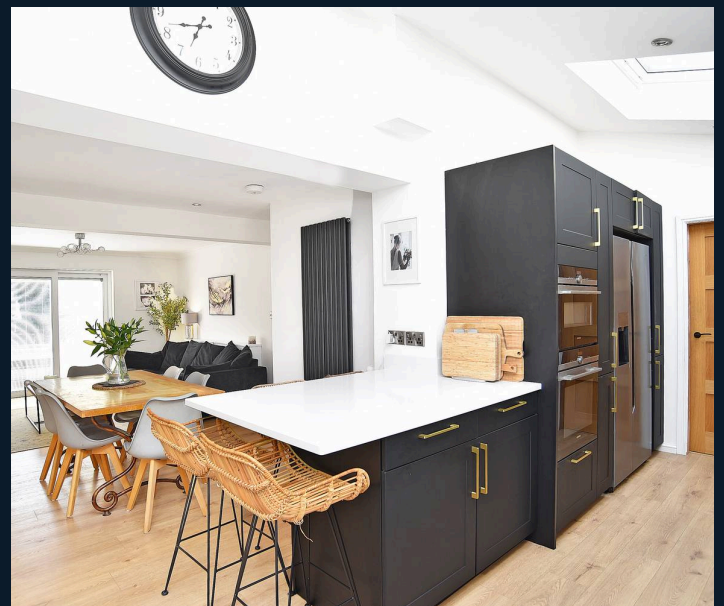
Offering well-balanced accommodation throughout, the property features a superb open-plan living dining kitchen, stylish interiors, private gardens and driveway parking, creating an excellent opportunity for families and professionals alike.

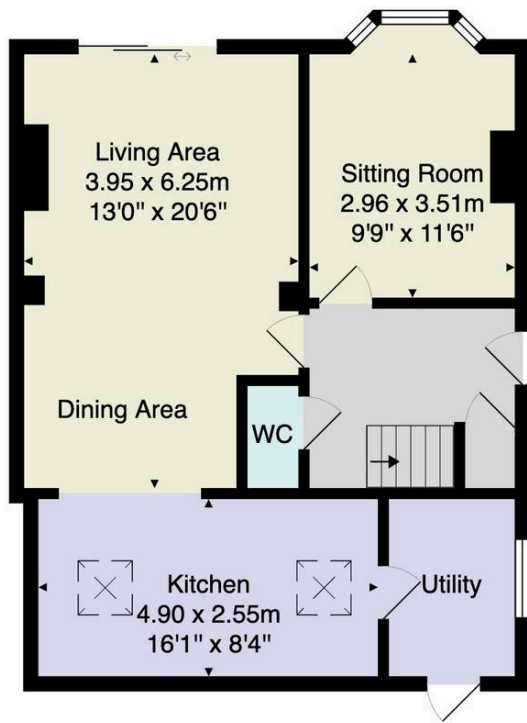


The accommodation opens via a welcoming entrance hall with ground floor WC and staircase to the first floor. To the front elevation is a bright bay-fronted sitting room, beautifully presented and centred around a contemporary media wall with inset fireplace, creating a comfortable and inviting space in which to relax.

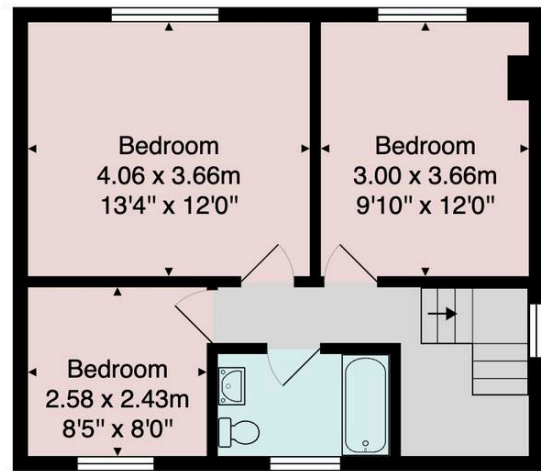
Undoubtedly the heart of the home is the impressive open-plan living dining kitchen, thoughtfully extended and designed to suit modern family living. The kitchen is fitted with an attractive range of contemporary shaker-style units, complemented by quartz work surfaces, integrated appliances and a central breakfast island. Roof lanterns and French doors flood the space with natural light, whilst the open-plan layout provides clearly defined areas for cooking, dining and relaxing. The adjoining living area features a stylish media wall and enjoys direct access to the garden, making it an ideal space for both everyday family life and entertaining. A separate utility room provides additional storage and practical laundry space.

To the first floor, a bright landing leads to three well-proportioned bedrooms. The principal bedroom benefits from an extensive range of fitted wardrobes, whilst the second bedroom offers further double accommodation. The third bedroom provides versatile space suitable as a child's bedroom, nursery, home office or dressing room. Completing the accommodation is a modern house bathroom, fitted with a contemporary white suite comprising a bath with rainfall shower over, vanity wash basin and WC.





Ground Floor



First Floor

Total Area: 108.6 m² ... 1169 ft²

All measurements are approximate and for display purposes only.

No liability is accepted by either the agency or Box Property Solutions Ltd as to the exact measurements of the rooms.

Box Property Solutions Ltd retains the copyright on this plan and allows agents to use it with agreed permission.

