



## Mereway Road, TW2

£595,000

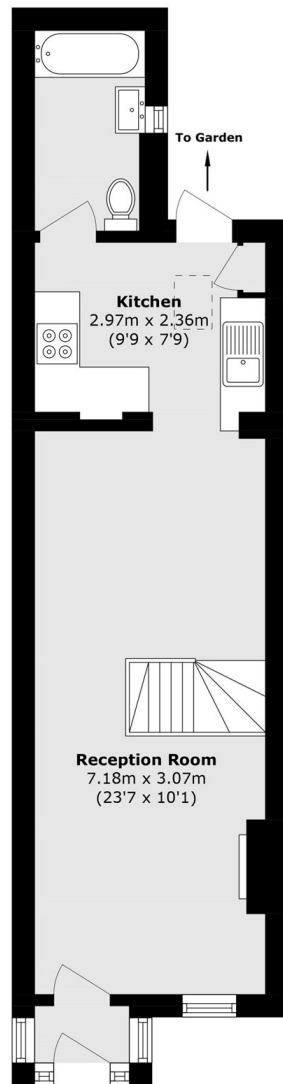
This charming two-bedroom Victorian home features an open-plan living space, modern kitchen and spacious rear garden, and is offered with no onward chain. A fantastic opportunity for a smooth and straightforward purchase in the heart of Twickenham.

Mereway Road is a quiet cul-de-sac located in the sought after area between Twickenham Green and Kneller Gardens. Twickenham town centre's shops and amenities are just a quarter of a mile away and Twickenham mainline station approximately half a mile.

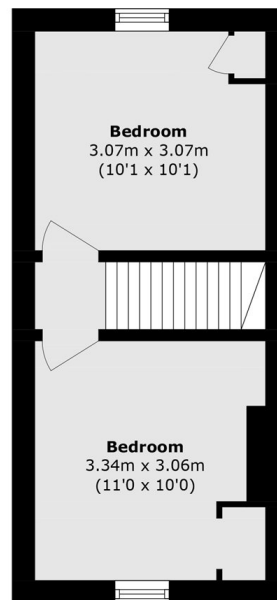
### Features

- Two Double Bedrooms
- Victorian Cottage
- Open Plan Lounge/Diner
- Large Rear Garden
- Lovely Condition
- No Onward Chain

# Mereway Road, Twickenham, TW2



**Ground Floor**



**First Floor**

Total area (approx.): 58.4 sq. m (628.6 sq. ft)