

142 Cavendish Road, West Didsbury, Manchester, M20 1QJ

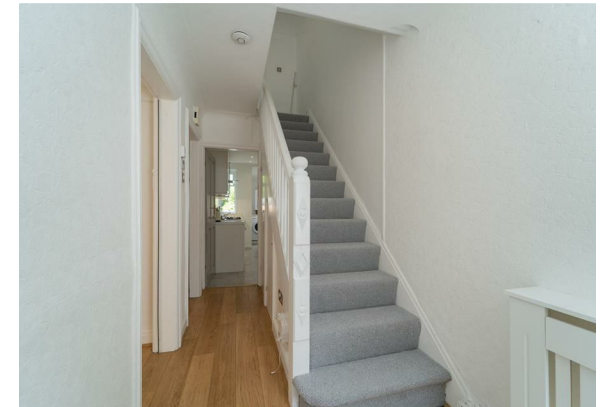


JP & Brimelow
ESTATE AGENTS

Offers In The Region Of £450,000

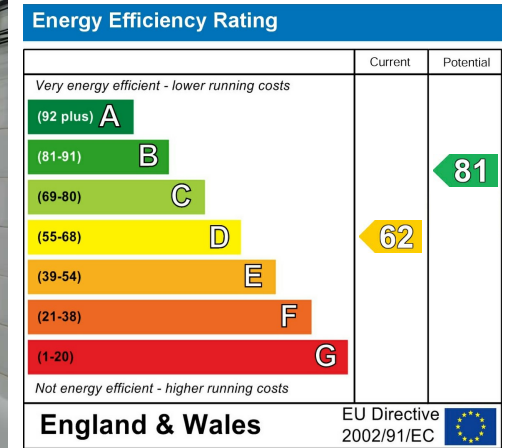
 3  1  2  D

VIDEO TOUR AVAILABLE An attractive and homely, THREE BEDROOM semi-detached property, occupying a desirable position along the tree-lined Cavendish Road in the heart of West Didsbury. The property is within close proximity to the excellent range of independent shops, bars and restaurants found along Burton Road, as well as the open green spaces of nearby parks. The location is particularly popular, given its vibrant atmosphere and strong community feel. The well-planned accommodation consists of an entrance hallway, a spacious open plan lounge leading to a dining room. A fully-fitted kitchen with integrated dishwasher and utility space completes the ground floor. To the first floor there are two double bedrooms, a three-piece bathroom suite and a third bedroom. Well placed for transport links, the property is a three-minute walk from Withington Metrolink station, providing direct access to Manchester city centre, Manchester Airport and MediaCity, offering convenience for commuters. The property further benefits from gas-fired central heating, a front garden and a further enclosed lawned garden to the rear. Early viewing is highly recommended to appreciate the quality and location of this home. OFFERED WITH NO VENDOR CHAIN



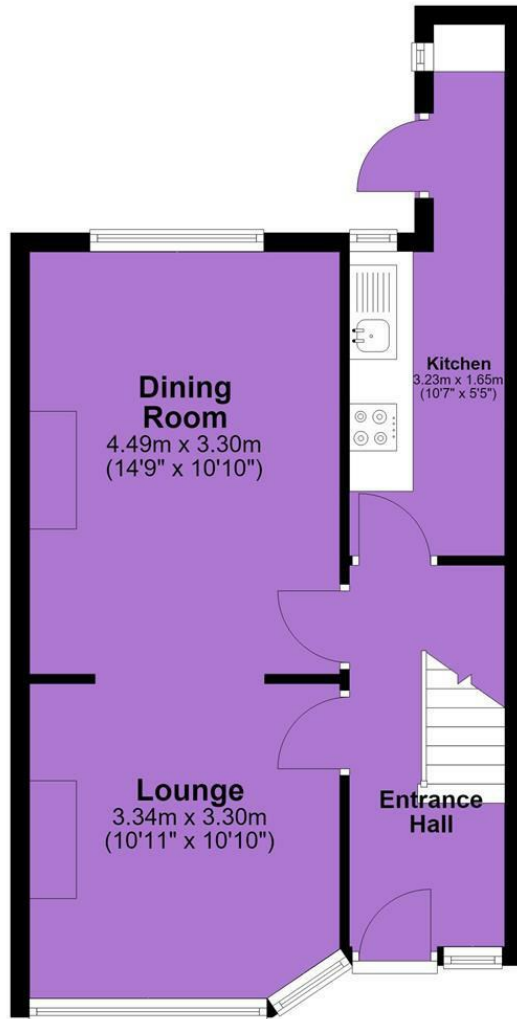


EPC Chart

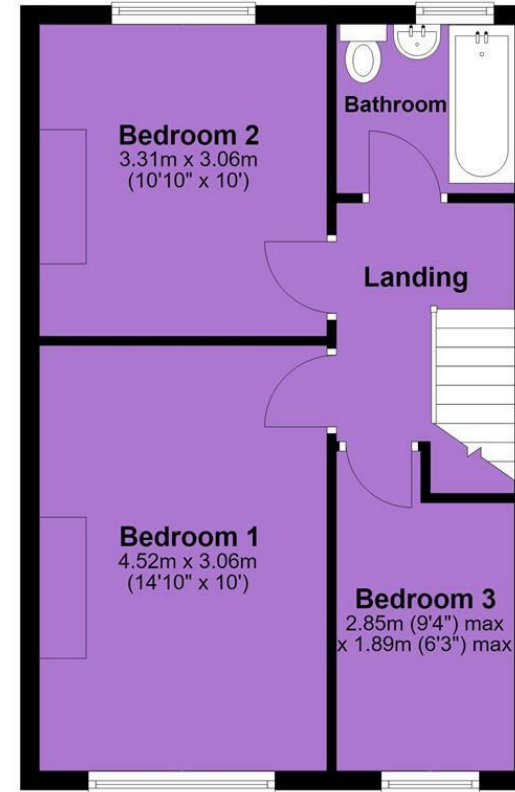


Tenure: **Freehold** Council Tax Band: **B**

Ground Floor



First Floor



JP & Brimelow Estate Agents Ltd
 430 Barlow Moor Road, Manchester, M21 8AD
 Tel: 0161 8822233
 E: sales@jpbrimelow.co.uk www.jpandbrimelow.co.uk



JP & Brimelow
 ESTATE AGENTS

NOTICE: JP & Brimelow Estate Agents Ltd for themselves and for the vendors or lessors of this property whose agents they are give notice that:

- (i) the particulars are set out as a general outline only for the guidance of intending purchasers or lessees, and do not constitute, nor constitute part of, an offer or contract;
- (ii) all descriptions, dimensions, references to the condition and necessary permissions for use and occupation, and other details are given in good faith and are believed to be correct but any intending purchasers or tenants should not rely on them as statements or representations of fact but must satisfy themselves by inspection or otherwise as to the correctness of each of them;
- (iii) no person in the employment of JP & Brimelow Estate Agents Ltd has any authority to make or give any representation or warranty whatever in relation to this property.

jpandbrimelowstateagents

@jpandbrimelow