



Foss View, Huntington Road, Huntington, York

£430,000

Stephensons
land & new homes

stephensons4property.co.uk

S

Huntington Road,
York
YO31 9BR

Est. 1871

£430,000

An exclusive development of thoughtfully designed properties within a highly sought-after riverside location in close to York city centre.

These architecturally designed semi-detached homes showcase contemporary open-plan living, with elegant doors opening onto elevated rear terraces that overlook the tranquil River Foss. The kitchens are appointed with classic shaker-style cabinetry and a suite of high-specification integrated appliances, seamlessly flowing into generous dining and living areas.

The thoughtfully arranged ground-floor layout comprises three bedrooms, including a principal suite with en suite shower room, and two additional bedrooms served by a sleek, modern house bathroom.

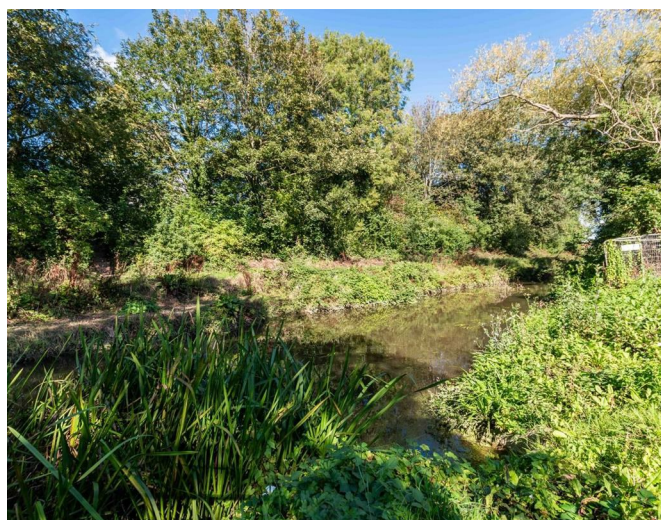
Externally, the raised terraces accessed from the kitchen offer an ideal space for al fresco entertaining, with steps descending to spacious, lawned gardens that border the River Foss, creating a truly peaceful and picturesque setting. Off-street parking is provided to the front of each property.

Located on the fringes of York's historic city centre, Huntington Road offers convenient access to the heart of the city. A leisurely 10-minute cycle leads you to the charming cobbled streets of the Shambles, the majestic York Minster, the serene Museum Gardens, York Theatre Royal, and a wealth of local amenities. Further afield, York Racecourse and the expansive greenery of The Knavesmire await, along with the mainline railway station offering regular services to London Kings Cross—all well connected by frequent bus routes.

SPECIFICATION

Kitchen

- Fitted kitchen units, quartz worktops and splashback
- Self-closing drawer pack, soft closers to all unit doors & cutlery draw insert
- Electric oven with electric hob (induction) and extractor hood
- Integrated microwave
- Integrated 70/30 fridge/freezer
- Inset sink bowl and tap
- Integrated dishwasher
- LVT flooring





- Chrome recessed downlighters
- Under cabinet lighting
- Space for washing machine

Main bathroom

- White sanitaryware & full/semi-basin pedestal
- Chrome single lever basin mixer
- Ceramic wall tiling
- Vinyl flooring
- Shower over bath with glass door, chrome & concealed thermostatic shower and valves
- Chrome recessed downlighters
- Chrome heated towel rail
- Ceramic wall tiling splashback to semi-basin pedestal

Ensuite

- White sanitaryware & full/semi-basin pedestal
- Chrome single lever basin mixer
- Ceramic wall tiling
- Shower enclosure complete with glass door/chrome frame & concealed thermostatic shower and valves
- Shower screen
- Vinyl flooring
- Chrome recessed downlighters
- Chrome heated towel rail
- Ceramic wall tiling splashback to semi-basin pedestal

Flooring

- Fitted carpets throughout - LVT to kitchen and living, vinyl to bathrooms

Heating

- Gas-fired central heating
- Underfloor heating throughout
- Digital room stats

Electrical

- Smoke detectors
- CO detector
- External lighting
- Waterproof external socket
- Waterproof external socket for car charging

Doors and Windows

- Double glazed windows
- Rear double glazed French doors (sliding plot 3, traditional opening plot 4)
- Contemporary 4-panel oak effect internal doors with chrome door furniture
- Double glazed velux windows and rooflights

Decorating

- Emulsion to walls & white emulsion to ceilings
- Painted woodwork

External

- Rear patio with glazed balustrade to patio and steps
- Timber boundary fencing
- Turfed rear garden
- External tap
- Private access to waterfront



Main bathroom

- White sanitaryware & full/semi-basin pedestal - Chrome single lever basin mixer
- Ceramic wall tiling - Vinyl flooring
- Shower over bath with glass door, chrome & thermostatic shower and valves
- Chrome recessed downlighters - Chrome heated towel rail
- Ceramic wall tiling splashback to semi-basin pedestal

Ensuite

- White sanitaryware & full/semi-basin pedestal - Chrome single lever basin mixer
- Ceramic wall tiling
- Shower enclosure complete with glass door/chrome frame & thermostatic shower and valves
- Shower screen - Vinyl flooring
- Chrome recessed downlighters - Chrome heated towel rail
- Ceramic wall tiling splashback to semi-basin pedestal

Flooring

- Fitted carpets throughout - LVT to kitchen and living, vinyl to bathrooms

Heating

- Gas-fired central heating - Underfloor heating throughout - Digital room stats

Electrical

- Smoke detectors - CO detector - External lighting - Waterproof external socket
- Waterproof external socket for car charging

Partners:

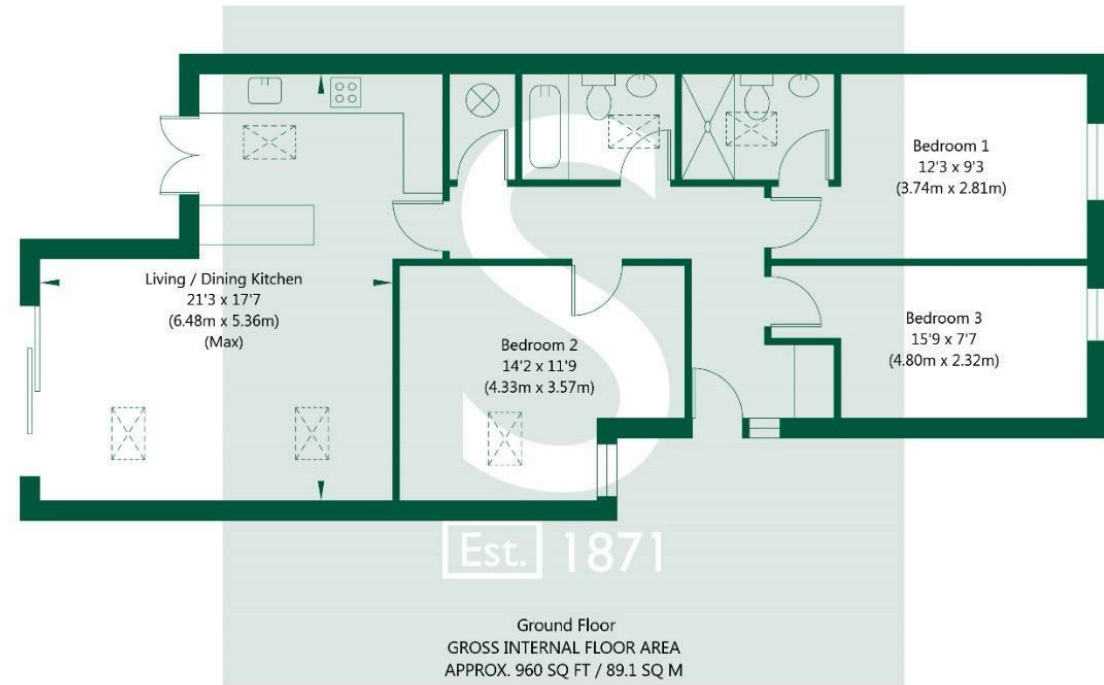
J F Stephenson MA (Cantab) FRICS FAAV
I E Reynolds BSc (Est Man) FRICS
R E F Stephenson BSc (Est Man) MRICS FAAV
N J C Kay BA (Hons) pg. dip MRICS
O J Newby FNAEA
J E Reynolds BA (Hons) MRICS
R L Cordingley BSc FRICS FAAV
J C Drewniak BA (Hons)
E G Newby MRICS
T Brooks MNAEA

Associate Partners:

N Lawrence
I Jarvis MNAEA

York: 01904 625533
Boroughbridge: 01423 324324
Easingwold: 01347 821145
Selby: 01757 706707
Haxby: 01904 809900

Plot 3, Foss View, Huntington, York, YO31 9BR



NOT TO SCALE - FOR ILLUSTRATIVE PURPOSES ONLY
APPROXIMATE GROSS INTERNAL FLOOR AREA 960 SQ FT / 89.1 SQ M
Copied from existing plans and accuracy cannot be guaranteed
All measurements and fixtures including doors and windows are approximate and should be independently verified.