



WETHERELL
MAYFAIR'S FINEST PROPERTIES



Park Street, W1K

£5,000 PCM

A modern one bedroom apartment situated on the first floor (with lift) of this period building.

This beautifully presented apartment features a spacious living room with access to a private balcony, alongside a sleek, modern kitchen. The generously sized bedroom offers ample built-in storage, its own private balcony, and a stylish en-suite bathroom, while a separate guest WC adds further convenience.

The property is enhanced by high ceilings throughout, creating a bright and airy feel, complemented by stunning floor-to-ceiling windows that flood the space with natural light.

Park Street runs from Oxford street, parallel to Hyde Park which offers residents expansive green open spaces along with garden squares within walking distance too.

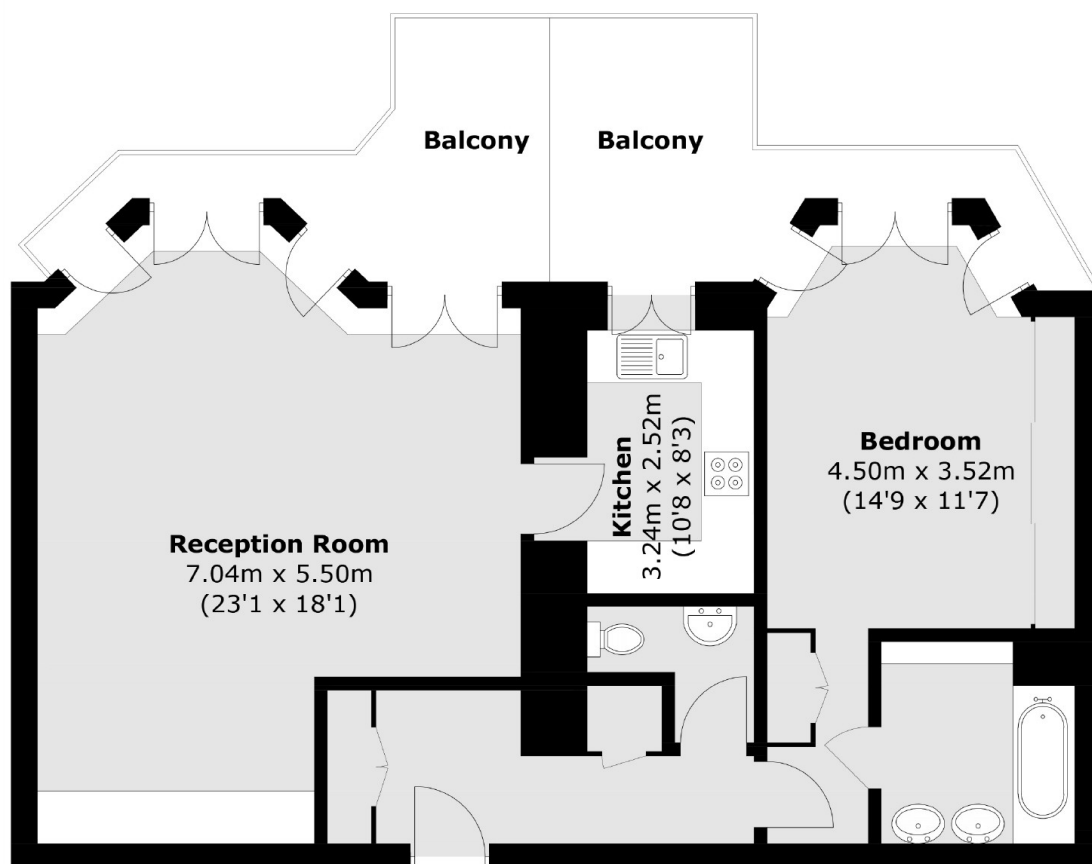


FEATURES

- Spacious Double Bedroom • First Floor • Lift Access • Furnished • Private Balcony • Excellent Location •



Park Street,
London, W1K



Total area (approx.): 77.3 sq. m (832.0 sq. ft)
Balcony: 18.0 sq. m (193.7 sq. ft)