



Whitefield  
Madeira Road | Totland | Isle of Wight | PO39 0BJ

# STEP INSIDE

## Whitefield

This impressive and characterful residence thought to date back to 1870's, offers an exceptional blend of period charm and versatile living space, thoughtfully arranged across three floors and complemented by beautifully enclosed gardens to both the front and rear. From the moment you step through the private solid gate, into a walled courtyard, the sense of privacy is apparent. Entering the welcoming glazed entrance porch, with its original tiled flooring and triple aspect outlook, the home immediately conveys a sense of warmth, history, and refined elegance.

The reception hall sets the tone leading to a selection of beautifully proportioned reception rooms, each retaining an abundance of original features including ornate coving, picture rails, and striking cast iron fireplaces. The drawing room is particularly inviting, enhanced by a charming turret bay that overlooks the front courtyard, while the dining room enjoys direct access outside, creating a seamless connection for entertaining. A further sitting room provides a cosy yet spacious retreat, with views over the garden and access to the exterior, making it an ideal space for relaxation or family living.

At the heart of the home lies a well-appointed kitchen fitted with a range of wall and floor units and solid work surfaces and space for a breakfast table, combining practicality with timeless style. This space is perfectly supported by a generous utility room, complete with additional storage and a walk-in larder, ensuring the property caters effortlessly to modern day living while retaining its traditional appeal. A ground floor bathroom adds further convenience and flexibility.

Upstairs, the sense of space continues with well-balanced accommodation including a beautifully presented principal bedroom featuring distinctive turret windows, filling the room with natural light. Additional bedrooms are equally well-proportioned, many benefiting from original fireplaces and charming outlooks, with two enjoying en-suite facilities. A further shower room serves bedrooms one and two.

A standout feature of this home is the substantial upper-level studio, offering a highly adaptable space filled with natural light from a large skylight and original dormer windows. With its own adjoining rooms, this area lends itself perfectly to creative pursuits, a home office suite, or additional guest accommodation, enhancing the property's flexibility.

Externally, the property continues to impress. The front courtyard garden is enclosed and thoughtfully landscaped, providing a private and attractive setting ideal for outdoor dining and entertaining, with the added benefit of adjacent off-road parking. To the rear, a further enclosed garden offers a beautifully landscaped and secluded retreat, complete with patio seating areas, and a raised pond and water feature, creating a perfect environment for relaxation. A charming garden room with power and light adds yet another dimension, with an adjoining workshop.

Rich in original character and offering generous, flexible accommodation throughout, this is a truly distinctive home that effortlessly combines period elegance with modern practicality.





# SELLER INSIGHT

“ As one of the remaining Totland Turrets it was the turret that first caught our attention, but within minutes of walking down the hallway, we had already fallen for her character & charm.

We've been fortunate to have lived with her close to twenty years, many locally still call her the 'doctor's house' as for many decades it was one of the local surgeries.

The original Victorian layout flows throughout the floors with the numerous rooms allowing an abundance of space to relax and enjoy, with the added bonus of natural light flooding through the large sash windows. Much of the original detailing remains adding to her personality, & the vast studio has had a variety of uses from art studio, games room to an overnight stay for a dozen happy campers.

Situated close to local amenities, with the beach at the bottom of the road, numerous foot paths and walks around the glorious West Wight, we've loved exploring the wonderful local scenery or just enjoying the house and enclosed gardens with friends & family.”



\* These comments are the personal views of the current owner and are included as an insight into life at the property. They have not been independently verified, should not be relied on without verification and do not necessarily reflect the views of the agent.





**Education**

Primary Schools:

Brighstone C of E Primary School, Brighstone 01983 740285  
 Freshwater & Yarmouth C of E Primary School, Freshwater-  
 01983 760345  
 Shalfleet C of E Primary School, Shalfleet 01983 760269  
 St Saviour's R C Primary School, Totland 01983 752175

Secondary Schools/Colleges:

Christ The King Upper College, Newport 01983 537070  
 Carisbrooke College, Newport 01983 861222  
 Medina College, Newport 01983 526523  
 Ryde with Upper Chine School, Ryde 01983 562295  
 Ryde Academy, Ryde 01983 567331  
 Island Innovation VI Form Campus, Newport 01983 522886  
 Isle of Wight College 01982 526631

Learning Assisted Schools:

Medina House, School Lane, Newport 01983 522917  
 St. Georges, Watergate Road, Newport 01983 524634  
 St Catherine's, Grove Road, Ventnor 01983 852722

**Travel Information**

3.1 miles from Yarmouth to Lymington Ferry Terminal  
 17.1 miles from Fishbourne to Portsmouth Ferry Terminal  
 15.7 miles from West Cowes to Southampton Ferry Terminal

Southern Vectis Buses routes provide regular services through the area, connecting you to all the areas of the island. For ticket prices visit [www.islandbuses.info](http://www.islandbuses.info)

**Healthcare**

Doctors Surgeries  
 Brighstone Surgery, Brighstone 01983 740219  
 Brookside Health Centre, Freshwater 01983 758998  
 Carisbrooke Health Centre, Carisbrooke 01983 522060

General Hospitals

St Mary's Hospital, Parkhurst Ryde, Newport 12.2 miles  
 01983 822099

**Local Attractions / Landmarks**

Totland Bay Pier, Totland Bay  
 Blackgang Chine - Blackgang  
 Tapnell Farm - Yarmouth  
 Fort Victoria Country Park - Norton  
 St Catherine's Oratory - Niton  
 The Needles Landmark Attraction - Alum Bay  
 Carisbrooke Castle - Carisbrooke  
 Isle of Wight Pearl Centre - Brighstone  
 Dimbola Museum and Galleries & Tea Room - Freshwater  
 Mottistone Manor - Mottistone  
 Farringford Historic House & Gardens - Freshwater

**Entertainment**

Restaurants / Bars  
 The Waterfront Bar & Restaurant, Totland Bay  
 Bay Café, Totland Pier  
 Highdown Inn, Totland Bay  
 The Piano Café / Restaurant, Freshwater Bay  
 The Vine Inn, Freshwater  
 The Hut, Freshwater  
 The Cow, Yarmouth  
 The Sun Inn, Hulverstone  
 On The Rocks, Yarmouth  
 Horse & Groom, Ningwood

These bars and restaurants are available within a 10-minute radius of this home

**Leisure Clubs & Facilities**

The West Bay Club & Spa, Freshwater - 2 miles  
 Freshwater Bay Golf Club, Freshwater - 2.4 miles  
 West Wight Sports & Community Centre - 1.1 miles  
 Royal Solent Sailing Club, Yarmouth - 3.1 miles

## GROUND FLOOR

Entrance Porch	
Hallway	
Drawing Room	14'7 x 12'4
Dining Room	14'9 x 12'4
Sitting Room	14'7 x 11'2
Bathroom	
Kitchen / Breakfast Room	14'6 x 12'4
Utility Room	12'5 x 8'5
Walk-In Larder	

## FIRST FLOOR

Landing	
Bedroom 1	13'6 x 12'5
Bedroom 2	13'6 x 12'4
Shower Room	
Bedroom 3	13'5 x 10'9
En-Suite Shower Room	
Bedroom 4	13'7 x 10'9
En-Suite Shower Room	

## SECOND FLOOR

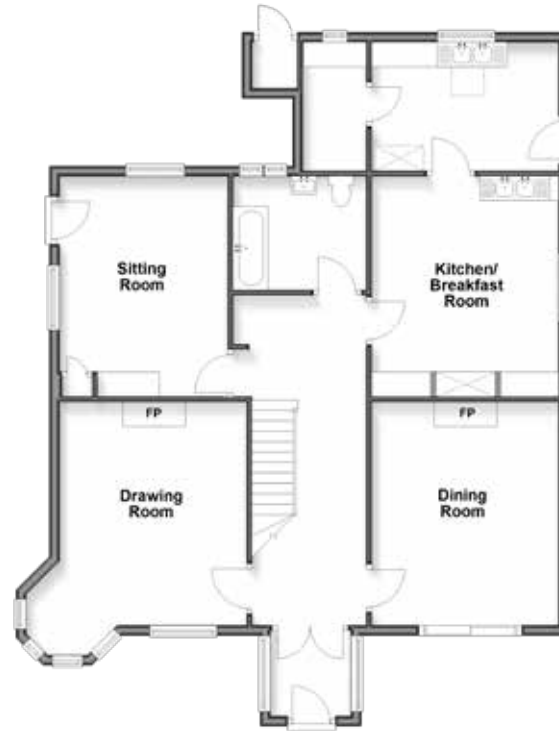
Landing Area	
Studio	24'10 x 10'6
Bedroom 5	10'7 x 8'2
Bedroom 6	10'6 x 8'2
Store Room	

## OUTSIDE

Front Garden  
Driveway  
Rear Garden  
Workshop  
Summer House

**Ground Floor**

Approx. 109.9 sq. metres (1182.6 sq. feet)



**First Floor**

Approx. 92.1 sq. metres (991.6 sq. feet)



**Second Floor**

Approx. 52.6 sq. metres (566.2 sq. feet)



**Outbuilding**

Approx. 16.3 sq. metres (175.1 sq. feet)



EPC TBC

Fine & Country Isle of Wight  
14 High Street, Cowes, Isle of Wight, PO31 7RZ  
01983 520 000 | isleofwight@fineandcountry.com

