



SELLINCOURT ROAD, SW17

£475,000

- Three bedrooms
- Close to transport links
- Open-plan living area
- Freehold
- Private garden
- Energy rating: D





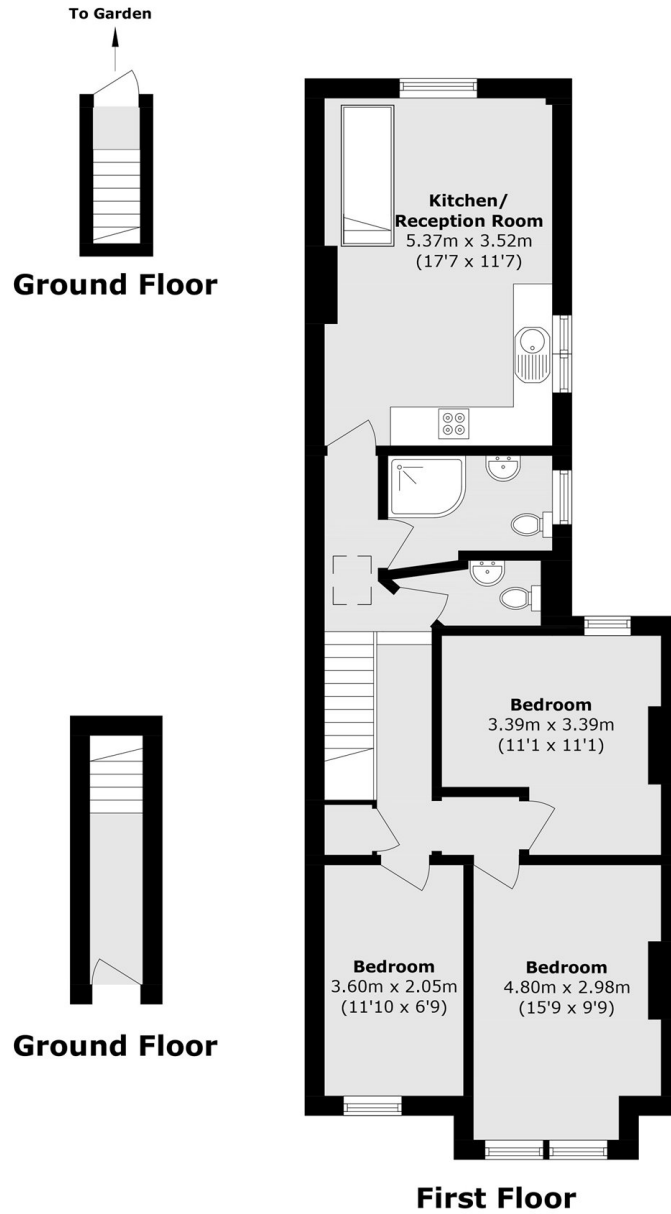
ABOUT THE HOME

This three-bedroom maisonette, located in Tooting Bec, features an open-plan kitchen and living area. The property offers a generously sized double bedroom with ample space for wardrobes and additional furniture. It further benefits from two additional bedrooms, both providing flexible accommodation suitable for use as guest rooms, home offices, or children's bedrooms.

Situated on a popular residential road in Tooting, the property is well located for a wide range of shops, bars, and restaurants. The open green spaces of Tooting Bec Common are also nearby, along with excellent transport links including Tooting Station and Tooting Broadway Underground Station.







Total area (approx.): 70.9 sq. m (763.2 sq. ft)
(Excluding Void)

JACKSONS TOOTING

3 Upper Tooting Road, London,
SW17 7TS
Sales: 020 8487 3175
Lettings: 020 8487 3176

Energy Rating: We aim to make our particulars both accurate and reliable. However they are not guaranteed; nor do they form part of an offer or contract. If you require clarification on any points then please contact us, especially if you're traveling some distance to view. Please note that appliances and heating systems have not been tested and therefore no warranties can be given as to their good working order.