



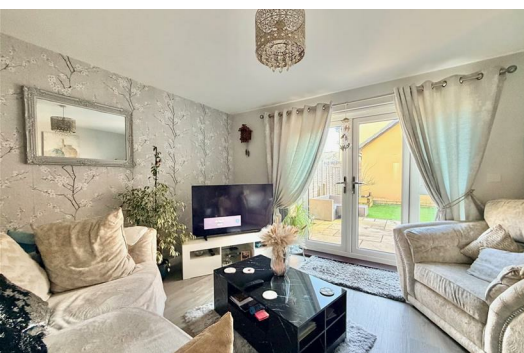
27 Limeburners Road

Hooe, Plymouth, PL9 9FL

Offers Over £250,000



Superbly-presented semi-detached house situated in this highly sought-after position close to Hooe Lake. The accommodation briefly comprises an entrance hall leading to a fitted kitchen, downstairs cloakroom/wc plus an open-plan living room, which opens onto a landscaped southerly-facing rear garden. On the first floor are 2 double bedrooms, family bathroom & master ensuite shower room. Drive & garage. Double-glazing & central heating.



LIMEBURNERS ROAD, HOOE, PLYMSTOCK, PLYMOUTH PL9

ACCOMMODATION

Front door opening into the entrance hall.

ENTRANCE HALL 8'5 x 3'8 max width (2.57m x 1.12m max width)

Providing access to the ground floor accommodation. Recessed cupboard also housing the boiler and consumer unit.

KITCHEN 9'11 x 6'1 (3.02m x 1.85m)

Recently re-fitted with a range of base and wall-mounted cabinets with matching fascias, work surfaces and tiled splash-backs. Inset one-&-a-half bowl single drainer sink unit. Built-in double oven and grill. Inset hob. Integral fridge and freezer. Integral washing machine. Concealed work-top lighting. LED plinth lighting. Suspended bay window with a fitted blind to the front elevation.

DOWNSTAIRS CLOAKROOM/WC 5'1 x 2'11 (1.55m x 0.89m)

Fitted with a wc and a corner-style pedestal basin with a tiled splash-back.

LIVING ROOM 18'11 x 12'10 (5.77m x 3.91m)

An open-plan living room with ample space for seating and dining. Stairs rising to the first floor. Open-plan area beneath. French doors with windows either side leading to the landscaped rear garden.

FIRST FLOOR LANDING

Providing access to the first floor accommodation. Loft hatch.

BEDROOM ONE 12'10 x 11'11 max dimensions, wall-to-wall (3.91m x 3.63m max dimensions, wall-to-wall)

Situated to the rear of the property. Window with a fitted blind to the rear. Built-in wardrobes with sliding mirrored doors. Over-stairs cupboard. Doorway opening into the ensuite shower room.

ENSUITE SHOWER ROOM 6'2 x 5'4 (1.88m x 1.63m)

Comprising an enclosed shower with waterproof panelling and a glass shower screen, pedestal basin with a matching splash-back and wc.

BEDROOM TWO 12'11 x 8'4 (3.94m x 2.54m)

Window to the front elevation plus a walk-in suspended bay window also to the front elevation providing lovely views over Hooe Lake.

BATHROOM 6'9 x 6'2 max dimensions (2.06m x 1.88m max dimensions)

Comprising bath with a tiled area surround and a mixer tap rinsing attachment, wc and pedestal wash basin with a tiled splash-back.

GARAGE 19'7 x 10'2 (5.97m x 3.10m)

Up-&-over-style door to the front elevation. Pitched roof providing some overhead storage. Fitted bench to the rear. Power and lighting. Side access door opening into the rear garden.

OUTSIDE

A driveway precedes the garage. The front garden is laid to chippings. A covered canopy with an outside light protects the main front entrance. The rear garden, which enjoys a southerly aspect, has been landscaped with a stone paved patio together with an artificial lawn, retained shrub bed and bordering beds to the patio. Outside light.

COUNCIL TAX

Plymouth City Council
Council tax band C

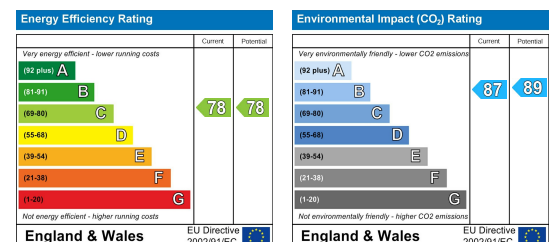
Area Map



Floor Plans



Energy Efficiency Graph



These particulars, whilst believed to be accurate are set out as a general outline only for guidance and do not constitute any part of an offer or contract. Intending purchasers should not rely on them as statements of representation of fact, but must satisfy themselves by inspection or otherwise as to their accuracy. No person in this firm's employment has the authority to make or give any representation or warranty in respect of the property.