



**Guide Price**  
**£325,000**

**Freehold**

3x  2x  1x 

**St. Catherine's Road,  
Maidstone, Kent ME15**

**OVER 60?**

Secure this property  
for up to **59% less!**

*Wards*  
Helping you move forwards



## Main features

- Beautifully presented with neutral decor throughout
- Garage and driveway
- En-suite shower room to bedroom 1
- Spacious throughout with room to entertain family and friends
- Set in a quiet development nearby to schools, shops and amenities

## Accommodation

### GROUND FLOOR

- Hallway
- Cloakroom
- Kitchen/Diner: 14'4 x 8'3 (4.37m x 2.52m)
- Lounge: 15'2 x 13'8 (4.63m x 4.17m)

### FIRST FLOOR

- Landing
- Bedroom 1: 10'5 x 8'5 (3.18m x 2.57m)
- En-Suite Shower Room
- Bedroom 2: 9'6 x 8'1 (2.90m x 2.47m)
- Bedroom 3: 7'3 x 6'5 (2.21m x 1.96m)
- Bedroom 4: 7'0 x 6'9 (2.14m x 2.06m)
- Bathroom

### OUTSIDE

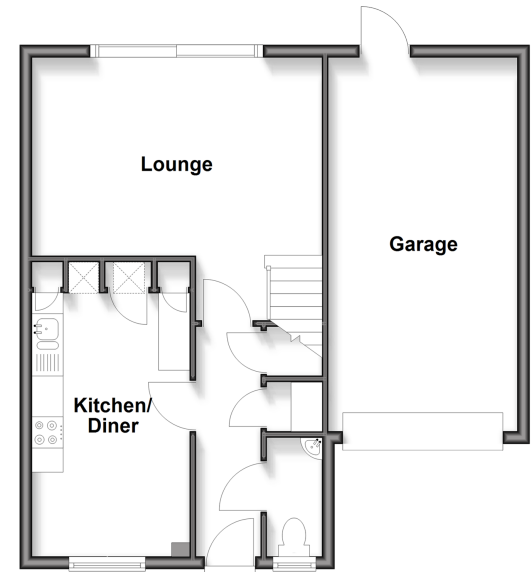
- Rear Garden
- Front Garden
- Driveway
- Garage

Call Maidstone - 01622 683737 ■ [wardsof Kent.co.uk](http://wardsof Kent.co.uk)

- Legal advice should be taken to verify fixtures/fittings, planning, alterations and/or lease details
- Appliances & services are untested, dimensions are approximate and floor plans are not to scale
- Through a Homewise Home For Life Plan people aged 60+ can secure this property for up to 59% less, by purchasing a Lifetime Lease

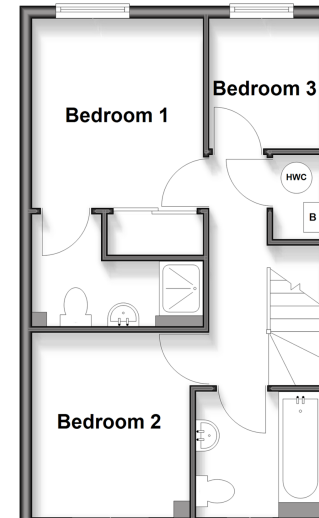
### Ground Floor

Approx. 56.1 sq. metres (603.6 sq. feet)



### First Floor

Approx. 37.3 sq. metres (401.3 sq. feet)



13159041/20260202/CMC/TB