



5345342 Caversham Road, Duxford Tower, Colindale, NW9 5QF  
£2,600 Per month





5345342 Caversham Road, Duxford Tower, Colindale, NW9 5QF

£2,600 Per month

Modern 2 Bed Apartment | Rooftop Terrace | Gym, Swim & Spa | Co-Working Lounge | Gated Parking | Landscaped Gardens | Minutes from Colindale Station.

Experience modern living with access to a range of exclusive resident facilities designed for comfort, convenience, and community. Enjoy a residents-only gym, communal workspaces, and a coffee shop just steps from your door. The development also offers a secure parcel room, on-site management team, and gated parking for peace of mind.

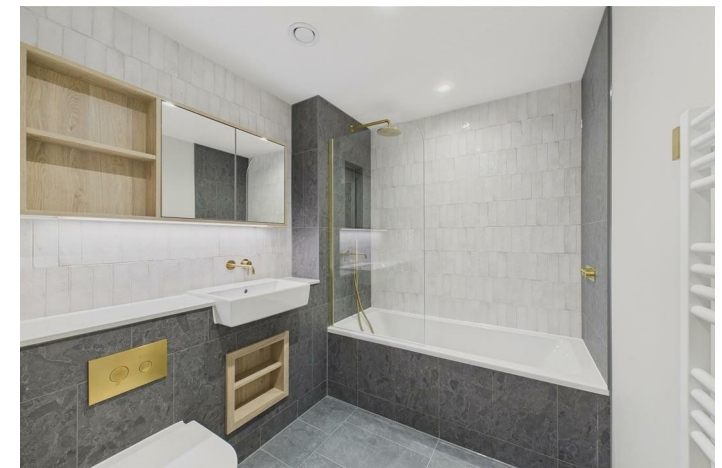
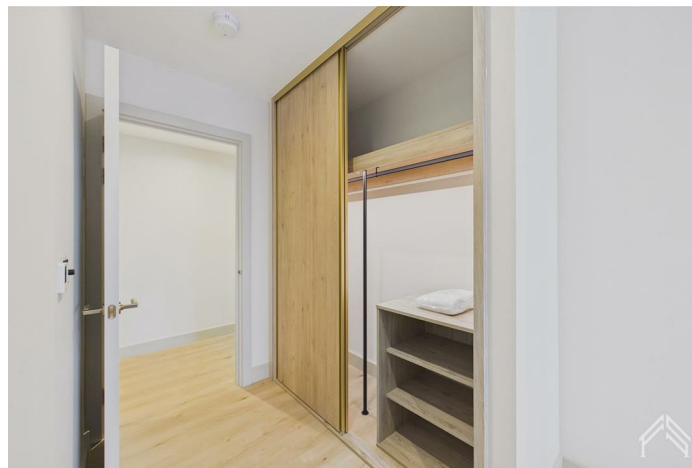
Unwind on the roof terrace with BBQ areas, or take advantage of access to a private swimming pool - all designed to elevate your everyday living.

Ideal for professionals and families seeking contemporary living with excellent connectivity and lifestyle perks.

## Description



## Situation



Furnished/unfurnished

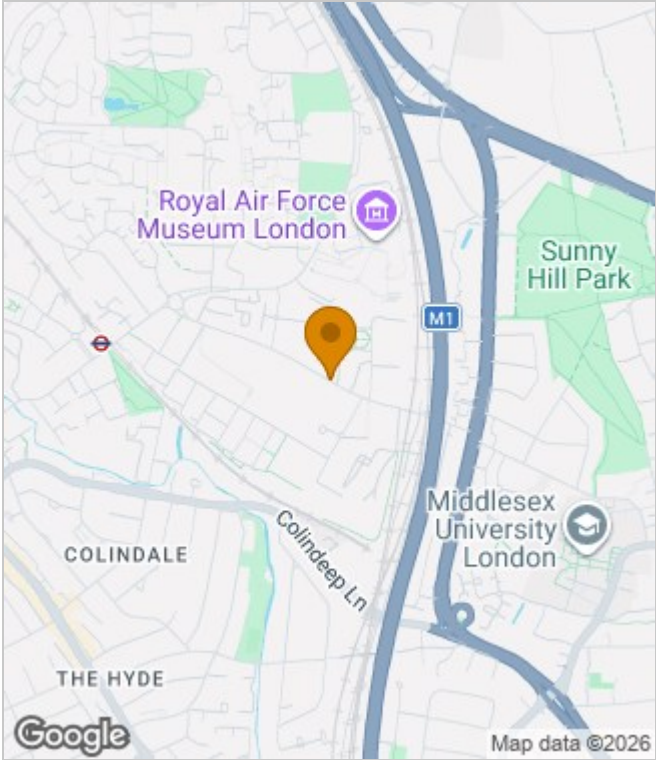
Council Tax Band: B

Available:

# Floor Plans



# Area Map



# Energy Performance Graph

Energy Efficiency Rating		Current	Potential
Very energy efficient - lower running costs			
(92 plus) A			
(81-91) B		81	81
(69-80) C			
(55-68) D			
(39-54) E			
(21-38) F			
(1-20) G			
Not energy efficient - higher running costs			
England & Wales		EU Directive 2002/91/EC	

These particulars, whilst believed to be accurate are set out as a general outline only for guidance and do not constitute any part of an offer or contract. Intending purchasers should not rely on them as statements of representation of fact, but must satisfy themselves by inspection or otherwise as to their accuracy. No person in this firm's employment has the authority to make or give any representation or warranty in respect of the property.