



DOWELLS STREET, SE10

£600,000

Modern apartment
Two double bedrooms
Two bathrooms
Large wraparound balcony
Prime location in Greenwich
Energy rating: b

@marshandparsons
marshandparsons.co.uk

MARSH &
PARSONS



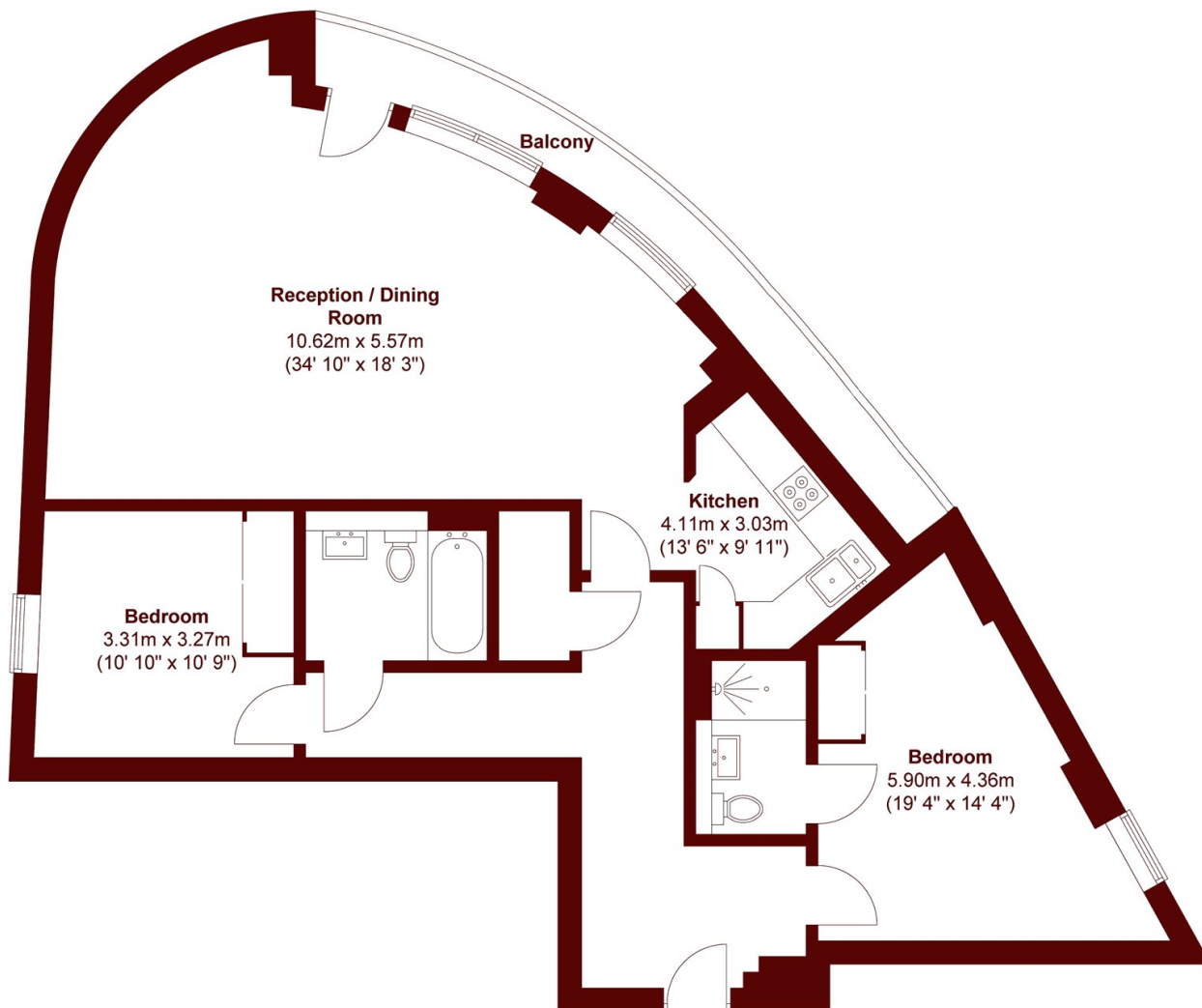
ABOUT THE PROPERTY

Bright and airy fifth floor modern apartment with a large wraparound balcony that provides fantastic views of the surrounding area. Inside, you'll find a generous lounge/diner and an open plan kitchen. There are two large double bedroom and a family bathroom. The main bedroom benefits from stunning views of the city and includes an en suite. Additional features include stylish wood flooring, ample storage, lifts and concierge services.

The apartment is ideally located just a few minutes' walk from Greenwich town centre, where you can explore the famous covered market, enjoy a river taxi ride from Greenwich Pier, or unwind in the beautiful royal park.



STEP INSIDE DOWELLS STREET



Sixth Floor

Total area (approx.) : 97.3 sq. m (1047 sq. ft)
Total balcony area (approx.) : 8.0 sq. m (86sq. ft)

Greenwich
020 8312 8312

Energy Rating: B We aim to make our particulars both accurate and reliable. However, they are not guaranteed; nor do they form part of an offer or contract. If you require clarification on any points then please contact us, especially if you're traveling some distance to view. Please note that appliances and heating systems have not been tested and therefore no warranties can be given as to their good working order

MARSH &
PARSONS