



STEVEN ROSENTHAL

exp[®] UK

@ steven.rosenthal@exp.uk.com

🌐 .stevenrosenthal.exp.uk.com

☎ 07884 131 817

4 Wendover Heights, Wendover, Buckinghamshire, HP22 6PH

A charming four-bedroom detached family home located in a popular residential area of the desirable market town of Wendover.

- Delightful four bedroom detached house
- Bright double aspect living room
- Dining room and convenient study
- Large kitchen and practical utility room
- Welcoming entrance hall and cloakroom
- Ensuite shower room and family bathroom
- Attractive landscaped gardens
- Garage and driveway parking
- Offered to the market with no onward chain
- Close to town centre and mainline station

A neatly presented four-bedroom detached family home, ideally positioned in a quiet no-through road in the highly sought-after market town of Wendover. The property offers bright and spacious accommodation throughout. A welcoming entrance hall provides access to a cloakroom, a double-aspect living room filled with natural light, a dining room, and an additional versatile space, ideal as a study or home office. The kitchen is well-appointed with ample storage and is complemented by a separate utility room. Upstairs, there are four well-proportioned bedrooms, including a principal bedroom with an ensuite shower room, in addition to a modern family bathroom. Externally, the property enjoys a beautifully maintained and attractively landscaped garden, ideal for outdoor entertaining and relaxation. A garage and driveway provide ample off-street parking.





Wendover is a highly desirable Buckinghamshire village set at the foot of the Chiltern Hills (Area of Outstanding Natural Beauty). It offers an appealing mix of countryside living and everyday convenience, with a lively High Street of independent shops, cafés, restaurants and pubs. Well regarded for its schooling, the area is popular with families, while the mainline station provides direct services to London Marylebone in under an hour, ideal for commuters.

Tenure: Freehold | EPC Rating: D | Council Tax Band: F



Approximate Gross Internal Area
Ground Floor = 84.3 sq m / 907 sq ft
First Floor = 56.6 sq m / 609 sq ft
Total = 140.9 sq m / 1,516 sq ft
(Including Garage)

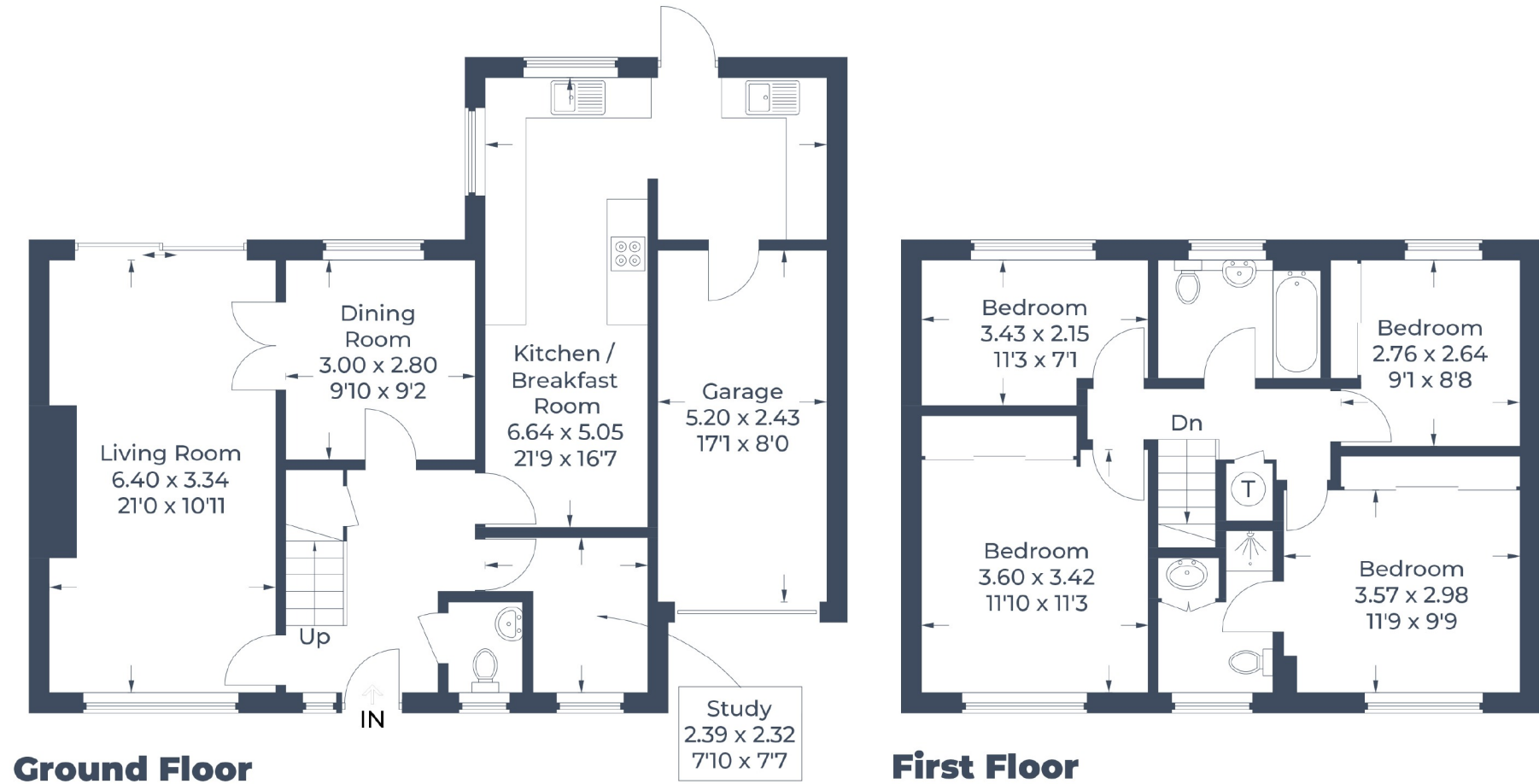


Illustration for identification purposes only,
measurements are approximate, not to scale.
© CJ Property Marketing Produced for EXP - Steven Rosenthal