

Fulham Palace Road, SW6

£525,000

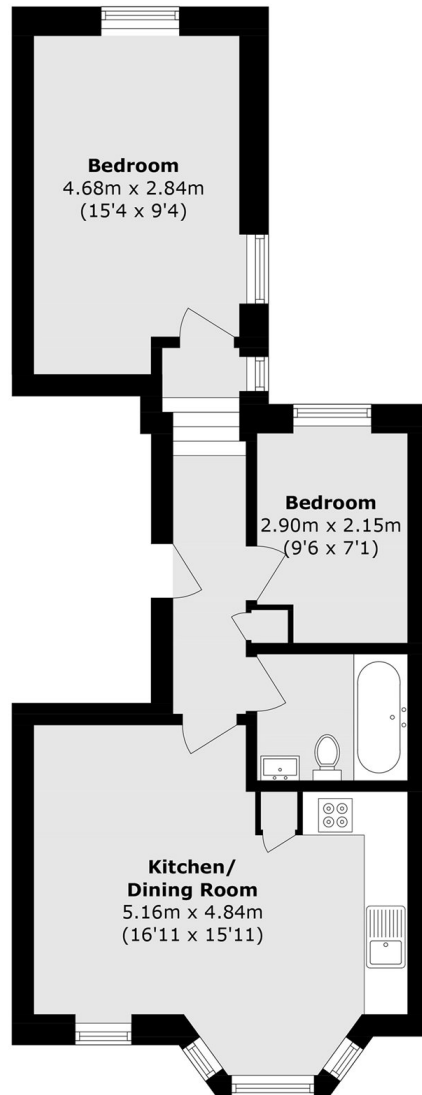
A fully renovated first floor two bedroom apartment. Featuring a light-filled reception room with bay windows, high ceilings and a modern kitchen, the property offers high-standard finishes throughout.

Enviably located directly in front of Bishops Park and the River Thames, the flat is within close proximity to all the amenities on Fulham Palace Road as well as Parsons Green.

Features

- Two Bedrooms
- First Floor
- Stylish Renovation
- No Chain
- Bay Windows
- Bishops Park

Fulham Palace Road, Fulham, SW6



First Floor

Total area (approx.): 49.4 sq. m (531.7 sq. ft)