



**BEAGLES WOOD ROAD**

**PEMBURY, TUNBRIDGE WELLS - £399,000**



**WOOD & PILCHER**

Sales, Lettings, Land & New Homes

15 Beagles Wood Road,  
Pembury, Tunbridge Wells, TN2 4HX

Entrance Hall - Lounge/Dining Room With Doors To  
Garden - Kitchen - Utility Area - First Floor Landing -  
Three Bedrooms - Bathroom & Separate WC - Front &  
Rear Gardens - Off Road Parking

Located in the pleasant village of Pembury adjacent to Tunbridge Wells and itself located in a peaceful cul-de-sac on the edge of the village, a three bedroom semi detached family property with private off road parking, generous room sizes and a large and private rear garden. A glance at the attached photographs and floorplan will give an indication as to the design and style of the property. It benefits tremendously from having a large, dual aspect principal lounge and a utility area away from the main kitchen with three good sized bedrooms and family bathroom to the first floor. The rear gardens are a real feature of the property - they are of a particularly good size and are stocked with a number of established shrubs, various walkways and a private lawn area to the rear. Properties in Pembury village have traditionally generated good interest and to this end we would encourage all interested parties to make an immediate appointment to view.

Access is via a partially glazed double glazed front door with an inset opaque panel, quarry tiled floor, areas of exposed painted brick works and then a further partially glazed door to:

#### ENTRANCE HALL:

Carpeted, radiator, various media points, stairs to the first floor, wall mounted thermostatic control. Door leading to:

#### LOUNGE/DINING ROOM:

A large dual aspect open plan area with fitted carpets. Excellent space for lounge furniture and entertaining and also dining furniture and entertaining. Feature stone fireplace with stone hearth and surround and a wooden mantle, the fireplace has a gas point (not in use). Areas of fitted shelving, two radiators, textured ceiling, various media points. Double glazed windows to the front and sliding doors leading to the rear gardens.



**KITCHEN:**

Fitted with a range of wall and base units with a complementary work surface. Space for free standing gas oven. Space for washing machine. Inset one and a half bowl stainless steel sink with mixer tap over. Tile effect flooring. Door to a large under stairs cupboard. Double glazed windows to the rear. This is open to:

**UTILITY SPACE:**

A range of wall and base units with space for tumble dryer and space for large freestanding fridge/freezer, tiled floor. Partially glazed double glazed door to the rear garden and further windows to the side.

**FIRST FLOOR LANDING:**

Carpeted, textured ceiling, loft access hatch, storage cupboard housing hot water tank with the areas of shelving above. Doors leading to:

**BEDROOM:**

Carpeted, radiator, textured ceiling. Space for a double bed and associated bedroom furniture. A bank of fitted wardrobes. Double glazed window to the rear.

**WC:**

Low level WC, wood effect flooring, textured ceiling with cornicing. Opaque window to the rear.

**BATHROOM:**

Fitted with a pedestal wash hand basin, panelled bath with mixer taps over, fitted glass shower screen and two shower heads. Wood effect flooring, radiator, wall mounted medicine cabinet. Opaque double glazed window to the rear.

**BEDROOM:**

Carpeted, radiator, textured ceiling with cornicing. Space for a double bed and associated bedroom furniture or a single bed and study furniture. Double glazed windows to the front.

**BEDROOM:**

Currently used as a study space but with room for a bed and associated bedroom furniture. Carpeted, radiator, textured ceiling. Door to a cupboard used for storage with areas of fitted shelving and coat rails. Double glazed windows to the front.



### OUTSIDE FRONT:

The front garden is mostly set to lawn with two areas of off road parking each suitable for one large vehicle each and with a five bar gate leading to further parking in a tandem style in front of a garage.

### OUTSIDE REAR:

There is low maintenance brickwork to the rear of the property with space for garden furniture and entertaining. A side gate returns to the parking area, to the side of the house and to the detached garage. There is a brick path that leads through beautiful areas of mature shrubs, small tree and specimen tree plantings with additional low maintenance areas for additional seating and a path leading to a lawn at the rear of the property. There is retaining wooden fencing and mature shrub and tree borders affording particularly good privacy in the context of this house's urban situation. There is a shed in the back garden and also one to the side.

TENURE: Freehold

COUNCIL TAX BAND: D

VIEWING: By appointment with Wood & Pilcher 01892 511211

ADDITIONAL INFORMATION: Broadband Coverage search Ofcom checker

Mobile Phone Coverage search Ofcom checker

Flood Risk - Check flooding history of a property England - [www.gov.uk](http://www.gov.uk)

Services - Mains Water, Gas, Electricity & Drainage

Heating - Gas Fired Central Heating

Important notice - These details have been prepared and issued in good faith and do not constitute representations of fact or form part of any offer or contract. Please note that we have not carried out a structural survey of the property, nor have we tested any of the services or appliances. All measurements are intended to be approximate only. All photographs show parts of the property as they were at the time when taken. Any reference to alterations or particular use of the property wherever stated, is not a statement that planning, building regulations or other relevant consent has been obtained. Floorplan. All measurements, walls, doors, windows, fittings and appliances their sizes and locations are shown conventionally and are approximate only and cannot be regarded as being a representation either by the seller or his Agent.



23 High Street, Tunbridge Wells,  
Kent, TN1 1UT

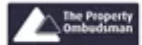
Tel: 01892 511211

Email:

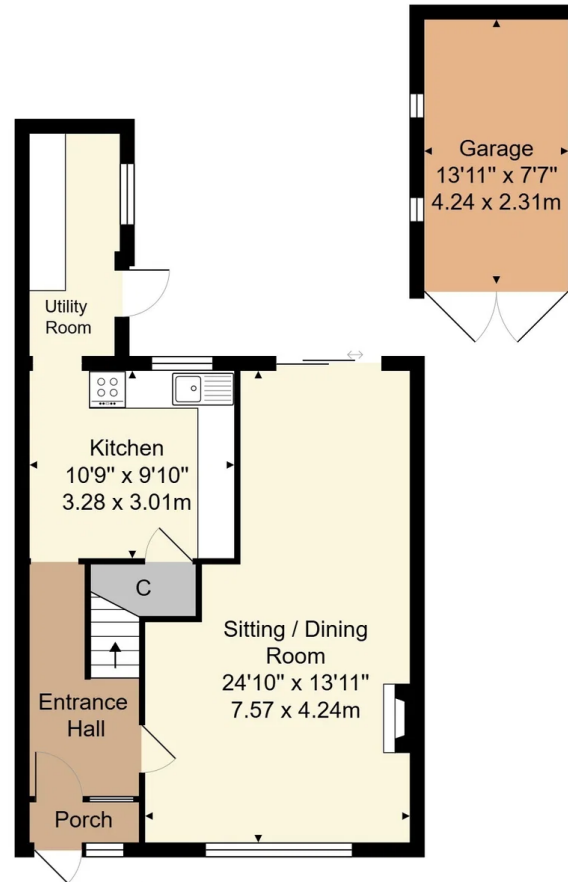
[tunbridgewells@woodandpilcher.co.uk](mailto:tunbridgewells@woodandpilcher.co.uk)

BRANCHES AT CROWBOROUGH, HEATHFIELD,  
TUNBRIDGE WELLS, SOUTHBOROUGH &  
ASSOCIATED LONDON OFFICE

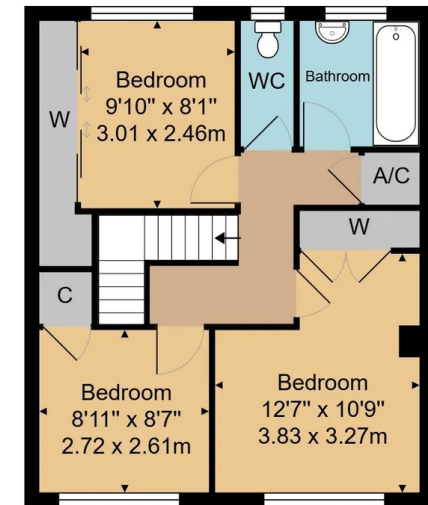
[www.woodandpilcher.co.uk](http://www.woodandpilcher.co.uk)



Score	Energy rating	Current	Potential
92+	A		
81-91	B		
69-80	C		73 C
55-68	D		
39-54	E	52 E	
21-38	F		
1-20	G		



Ground Floor



First Floor

House Approx. Gross Internal Area 1052 sq. ft / 97.7 sq. m

Garage Approx. Internal Area 105 sq. ft / 9.8 sq. m

Whilst every attempt has been made to ensure the accuracy of the floor plan contained here, measurements of doors, windows, rooms and any other items are approximate and no responsibility is taken for any error, omission, or mis-statement. This plan is for illustrative purposes only and should be used as such by any prospective purchaser or tenant. The services, systems and appliances shown have not been tested and no guarantee as to their operability or efficiency can be given.