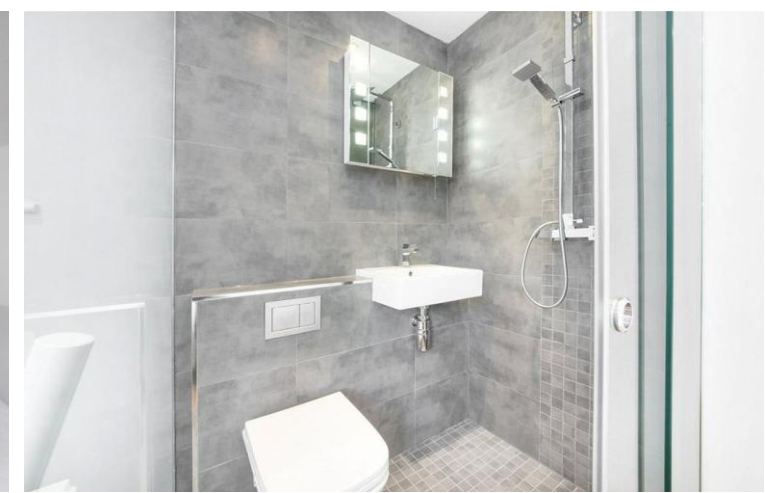
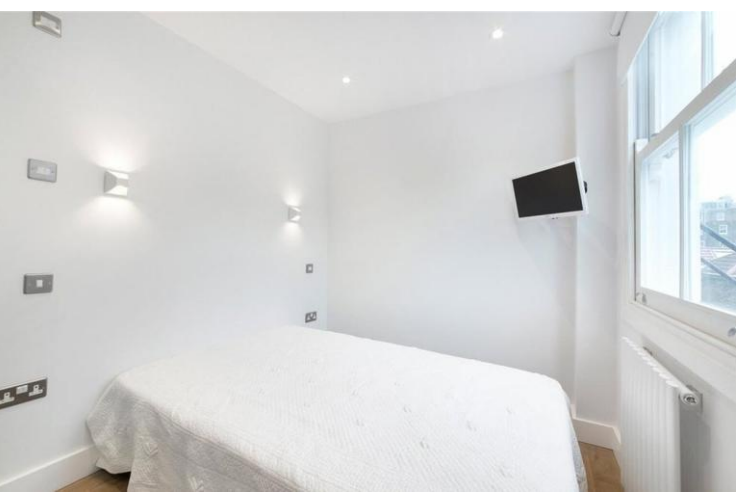




Courtfield Gardens
South Kensington, SW5

CHESTERTONS





A stylish mezzanine studio flat, situated between South Kensington and Earls Court. Set within a charming period building, this well-presented apartment is arranged over the ground and first floors, offering a smart and space-efficient layout.

•

£1,733.33 pcm

Additional tenant charges apply (fees apply to non-AST tenancies only)

Tenancy Agreement Fee: £300

References per Tenant/Guarantor: £60

Inventory check (approx. £100 – £250 inc. VAT)

chestertons.co.uk/property-to-rent/applicable-fees

Minimum Term: 12 months
Deposit Required: £2,000.00
Local Authority: Kensington and Chelsea
Council Tax Band: B
EPC Rating: To be confirmed
Furnished

Chestertons South Kensington Lettings

44-48 Old Brompton Road

South Kensington

London

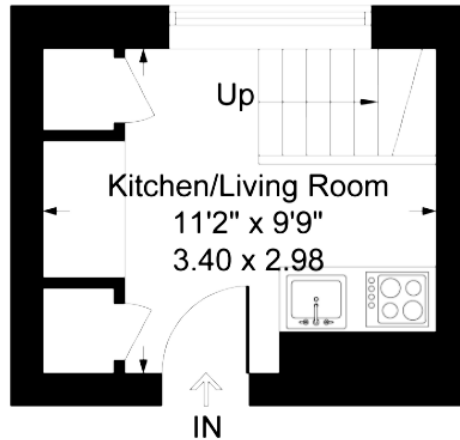
SW7 3DY

southkensingtonlettingsusers@chestertons.co.uk

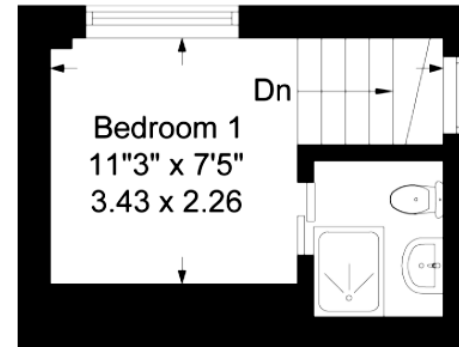
02075891244

Courtfield Gardens, London, SW5

Approximate Gross Internal Area = 202 sq ft / 18.72 sq m



Ground Floor
Approximate Floor Area
110 sq. ft
(10.21 sq. m)



First Floor
Approximate Floor Area
92 sq. ft
(8.51 sq. m)

Illustration for identification purposes only,
measurements are approximate, not to scale. (ID912)

