



Canal Street, Wigan, WN6

£1,225 PCM

Welcome to Simple Life Homes at Canalside.

The Ellesmere is a stunning home built with your needs in mind. Downstairs, there is a generous living room, hallway and WC. The rear of the property has a magnificent living/kitchen area with a range of contemporary fitted units with integrated appliances. The room has French windows opening onto and overlooking the rear garden as well as a series of skylights which flood the room with light – an ideal space for both family time and entertaining.

Upstairs there is a spacious family bathroom complete with a bath and shower, a master bedroom with fitted, mirrored wardrobes and two further well-proportioned bedrooms. At the top of the stairs you will also find a handy store cupboard.

The site benefits from close proximity (1.4 miles) to Wigan town centre and a good strategic location – less than 20 miles from both Manchester and Liverpool city centres with excellent connectivity via road and rail, being 3 miles from the M6/M58 interchange.

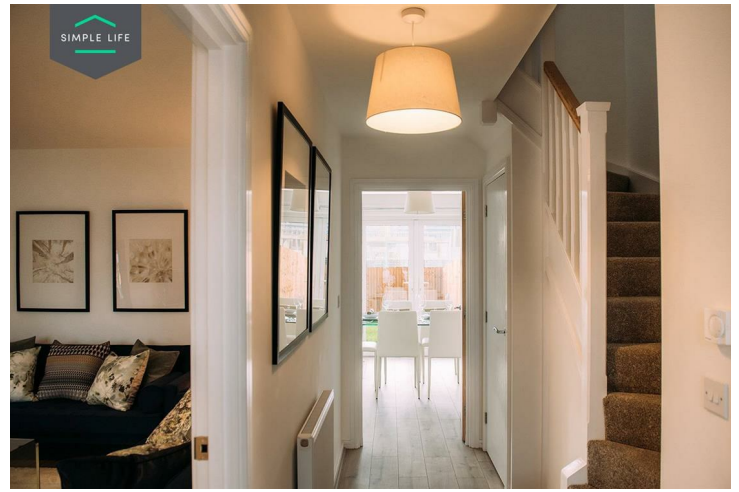
Ideal for families, there are 45 primary and secondary schools rated 'Good' or 'Outstanding' by Ofsted within 3 miles of the site.

Robin Retail & Leisure Park is one of the Borough's principle sport, leisure and retail complexes, featuring a multiplex cinema, major retail brands including Next and Matalan, as well as a football centre and gym. In addition, Wigan's main shopping centre The Grand Arcade includes many additional large stores such as M&S, Debenhams and TKMaxx.

To visit the site, use postcode WN6 7QF for Canal Street.

Deposit: £1410
Holding deposit: £280
Unfurnished
Council Tax: B
Available 27th April 2026





Key Features

- Private driveway
- Fitted wardrobes to master bedroom
- Fridge freezer
- Oven and hob
- Dark ash style worktops
- Security alarm system
- Dishwasher
- Washing/drying machine
- Light wash wood effect flooring
- Modern, white kitchen units

Location

