



## Palmerston Road, NW6

### £385,000

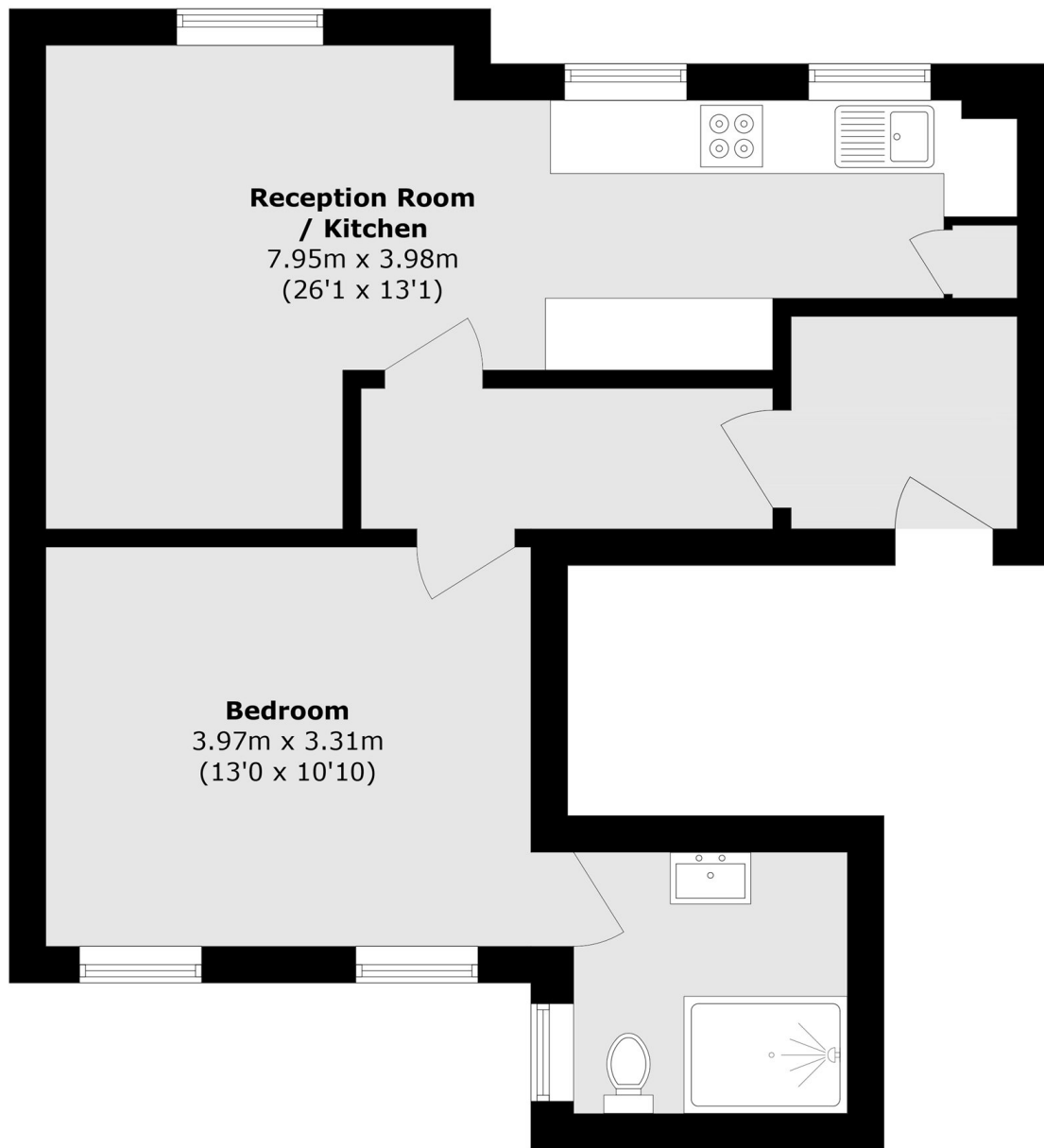
A stylish one bedroom apartment featuring an open plan living area and modern kitchen. Offered with no onward chain, it would make an ideal first time purchase or investment opportunity.

Palmerston Road is ideally located close to the numerous shops, cafes and restaurant. Excellent transport links include both Brondesbury Park and Brondesbury overground stations and Kilburn underground.

### Features

- One Bedroom
- Open Plan
- Integrated Appliances
- Modern Kitchen
- Close To Station
- No Onward Chain

# Palmerston Road, London, NW6



Total area (approx.): 48.1 sq. m (517.7 sq. ft)