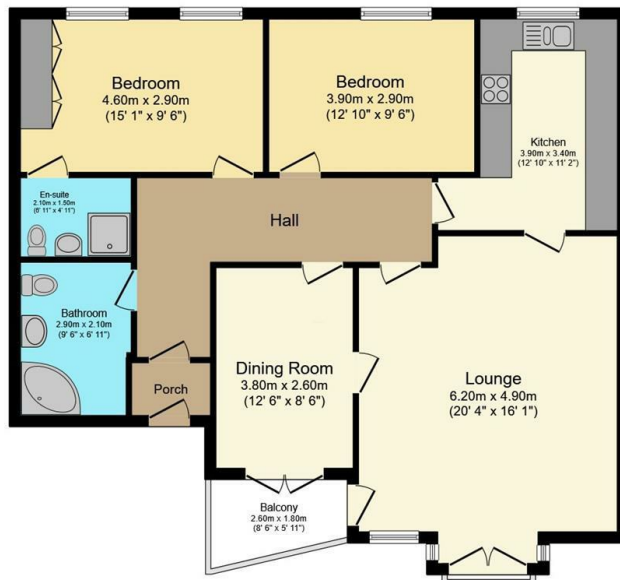




Flat 4, 715 Manchester Road, Sheffield, S10 5PS

Offers Over £270,000

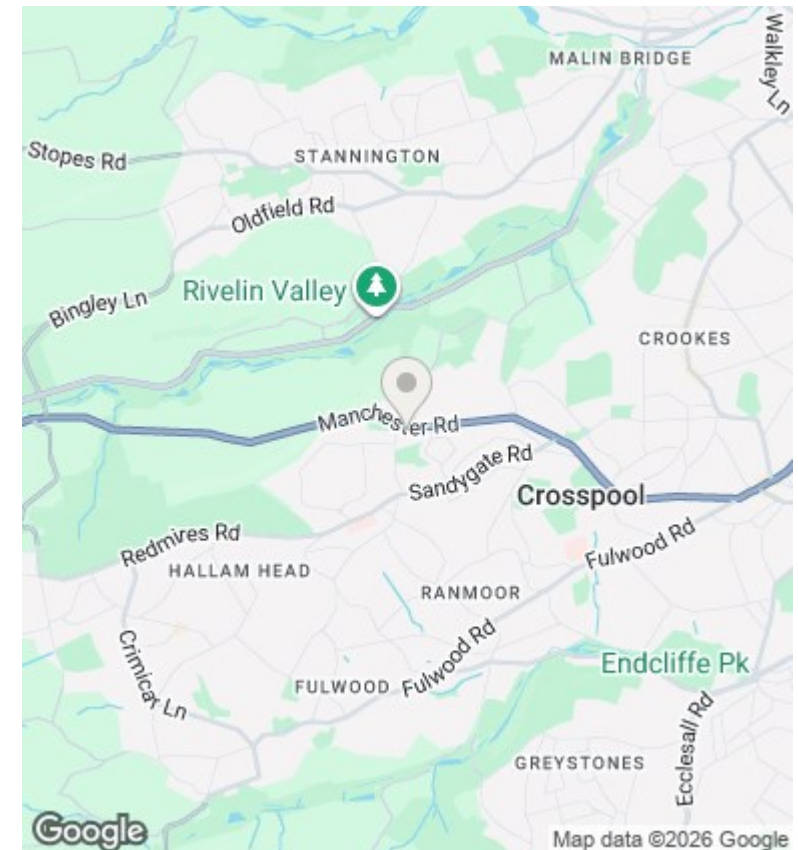
- No onward chain
- Main bedroom with en suite
- Balcony with incredible views
- Great location
- Over 1,000ft²
- Spacious living room
- Allocated parking space
- Two double bedrooms
- Dining room/home office
- Well maintained communal gardens



Floor Plan
Floor area 99.4 sq.m. (1,069 sq.ft.)

Total floor area: 99.4 sq.m. (1,069 sq.ft.)

This floor plan is for illustrative purposes only. It is not drawn to scale. Any measurements, floor areas (including any total floor area), openings and orientations are approximate. No details are guaranteed, they cannot be relied upon for any purpose and do not form any part of any agreement. No liability is taken for any error, omission or misstatement. A party must rely upon its own inspection(s). Powered by [www.Propertybox.io](https://www.propertybox.io)



Directions

Viewings

Viewings by arrangement only. Call 01142 687777 to make an appointment.

Council Tax Band

B

EPC Rating:

B

Energy Efficiency Rating		
	Current	Potential
Very energy efficient - lower running costs		
(92 plus) A		
(81-91) B	82	83
(69-80) C		
(55-68) D		
(39-54) E		
(21-38) F		
(1-20) G		
Not energy efficient - higher running costs		
England & Wales	EU Directive 2002/91/EC	