



## New Road

Blakeney, GL15 4DF

£475,000



## Charming Period Cottage in Idyllic Rural Setting

Nestled at the end of a peaceful no-through lane and enjoying a truly picturesque setting with a stream boundary and enchanting woodland backdrop, this beautifully presented pre-1900 semi-detached cottage offers a rare blend of character, charm and modern convenience.

The property is approached through mature cottage-style gardens, thoughtfully landscaped with vegetable beds, fruit beds, seasonal spring bulbs, a pond and a delightful flagstone patio, creating a wonderful outdoor environment for both relaxation and entertaining.

Internally, the accommodation has been sympathetically improved whilst retaining an abundance of period features. A refitted kitchen with a range of integrated appliances and opens seamlessly into the heart of the home. Three open-plan reception areas provide versatile living space, enhanced by oak flooring, stripped natural wood doors and a feature wood-burning stove, creating a warm and inviting atmosphere.

To the first floor, the principal bedroom benefits from a modern en-suite shower room, whilst two further bedrooms are served by a well-appointed family bathroom.

Further features include Georgian-style windows and oil-fired central heating.

Outside, a substantial detached double garage is complemented by a useful workshop and a versatile room above, offering excellent potential for a home office, studio, hobby room or ancillary accommodation, subject to any necessary consents.



### Entrance Hall :

16'8" x 5'5" (5.10 x 1.67)

Entered via glazed door with side screens, oak flooring, vertical radiator, twin glazed doors to main hallway.

### Cloakroom :

6'4" x 4'2" (1.95 x 1.28)

Low level WC, wash hand basin, coat hooks, book shelves, towel radiator, stripped natural wood door, oak flooring, Georgian style window to side aspect.

### Kitchen :

13'1" x 11'10" (4.00 x 3.63)

Re-installed in 2021, fitted with dual colour wall and base storage units, integrated dishwasher, fridge/freezer, induction hob, electric oven, extractor hood, deep pan drawers, breakfast bar, integrated storage bins, glass display cabinet, oak flooring, towel radiator, double glazed doors to outside, double glazed Georgian style window to front aspect,

### Main Hallway :

11'2" x 6'9" (3.41 x 2.08)

Oak flooring, two radiators, stairs to first floor, under stairs recess, twin glazed doors to Dining Room, Georgian double glazed window to rear aspect and separate window with integrated cat flap.

### Dining Room :

9'0" x 11'2" (2.75 x 3.41)

Oak Flooring, radiator, Georgian window (with secondary glazing) to front aspect, opening to Conservatory.

### Conservatory :

12'0" x 11'2" (3.68 x 3.41)

Double glazed windows and French doors to front, vertical radiator, opening to Living Room.

### Living Room :

9'11" x 17'4" (3.03 x 5.30)

Feature fireplace with wood burning stove, oak flooring, radiator, window to front aspect.

### First Floor Landing :

3'0" x 19'1" (0.92 x 5.83)

Built in airing cupboard (with radiator), two radiators, Georgian window to rear aspect.

### Master Bedroom :

10'5" x 10'4" (3.18 x 3.17)

Apex beamed ceiling, walk in wardrobe, radiator, Georgian window with secondary glazing to front aspect.

### En-Suite Shower Room :

6'8" x 5'9" (2.05 x 1.77)

Shower cubicle, low level WC, vanity wash hand basin, tiled walls, radiator, vinyl flooring, window to front with secondary glazing.

### Bedroom 2 :

13'1" x 11'9" (4.00 x 3.60)

Built-in wardrobe, small access to loft space (insulated), Georgian window to front aspect, double glazed Georgian window to side aspect, stripped natural wood door.

### Bathroom :

9'3" x 7'5" (2.84 x 2.27)

Period style suite comprising of freestanding bath with rain head shower over, traditional WC, period style wash hand basin, radiator, partially tiled walls, laminate flooring, extractor fan, stripped door, Georgian window with secondary glazing to front aspect.

### Bedroom 3 :

9'2" x 9'7" (2.81 x 2.93)

Radiator, access to loft space (insulated), Georgian window with secondary glazing, stripped natural wood door.

### Outside :

Beautifully landscaped in the style of a traditional English cottage garden, the grounds feature mature herbaceous and shrub borders, seasonal spring bulbs, climbing and shrub roses, a flagstone terrace, ornamental pond, and extensive lawn. Productive areas include a vegetable garden, apple trees, and established raspberry, red and white currants, gooseberry and tayberry canes. The garden benefits from a delightful stream boundary and a woodland backdrop, creating a peaceful and private setting. A Cotswold stone driveway provides ample parking for four vehicles."

The oil boiler and tank are situated on the rear boundary. Surface rain water runs into numerous water butts. There is a greenhouse, log store and composting area.

### Detached Double Garage :

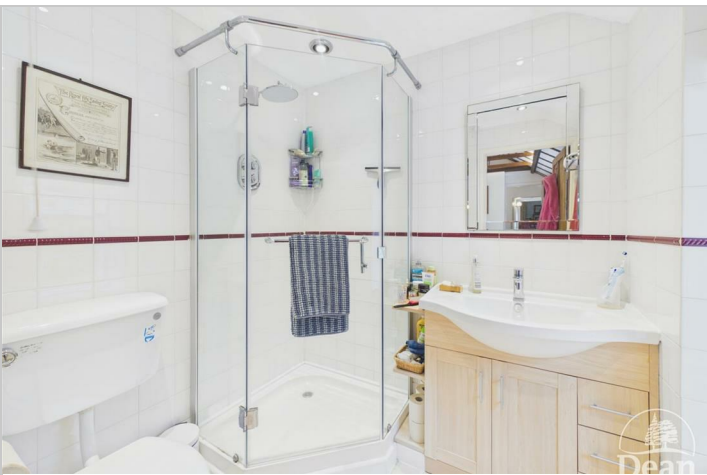
17'11" x 18'1" (5.47 x 5.52)

Two storey. Electric roller door, power and lighting, plumbing for washing machine, space for tumble dryer and cloakroom, stairs leads to the first floor room which is occasionally used for guests.

### Attached Workshop :

10'11" x 10'7" (3.34 x 3.23)

Power and light, windows to two aspects.



Consumer Notes: Dean Estate Agents Ltd have prepared the information within this website/brochure with care and co-operation from the seller. It is intended to be indicative rather than definitive, without a guarantee of accuracy. Before you act upon any information provided, we request that you satisfy yourself about the completeness, accuracy, reliability, suitability or availability with respect to the website or the information, products, services, or related graphics contained on the website for any purpose.

These details do not constitute any part of any Offer, Contract or Tenancy Agreement.

Photographs used for advertising purposes may not necessarily be the most recent photographs, although every effort is made to update photographs at the earliest opportunity. Any reliance you place on such information is therefore strictly at your own risk. All photographic images are under the ownership of Dean Estate Agents Ltd and therefore Dean Estate Agents retain the copyright.

You must obtain permission from the owner of the images to reproduce them.

Tenanted Property – we are not always able to show the most recent condition of a property due to tenants' privacy and we may choose to show the photographs of the property when it was last vacant to at least allow clients some idea of the internal condition. Therefore, we would of course, urge you to view before making any decisions to purchase or rent the property and before any costs.

Energy Performance Certificates are supplied to us via a third party and we do not accept responsibility for the content within such reports.

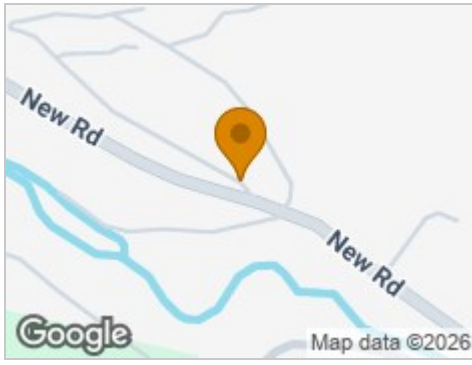
PRC Certificates – Some ex-local authority properties have been repaired in recent years using the PRC Scheme wherein a certificate has been produced by a qualified property engineer. This certificate does not imply the suitability for a mortgage approval and you must satisfy yourself of the work carried out that may meet your lenders criteria.

As with leasehold property or new build development sites, you are likely to be responsible for a contribution to management charges and/or ground rent or a contribution to the development service charge. Please enquire at the time of viewing.

You may also incur fees for items such as leasehold packs and, in addition, you will also need to check the remaining length of any lease before you complete a mortgage application form.

Please ask a member of our team for any help required before committing to purchase a property and incurring expense.

## Road Map



## Hybrid Map



## Terrain Map



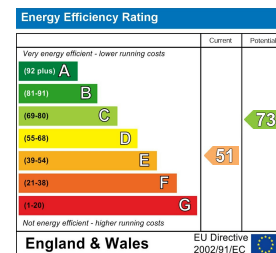
## Floor Plan



## Viewing

Please contact our Cinderford Office on 01594 825574 if you wish to arrange a viewing appointment for this property or require further information.

## Energy Efficiency Graph



These particulars, whilst believed to be accurate are set out as a general outline only for guidance and do not constitute any part of an offer or contract. Intending purchasers should not rely on them as statements of representation of fact, but must satisfy themselves by inspection or otherwise as to their accuracy. No person in this firm's employment has the authority to make or give any representation or warranty in respect of the property.