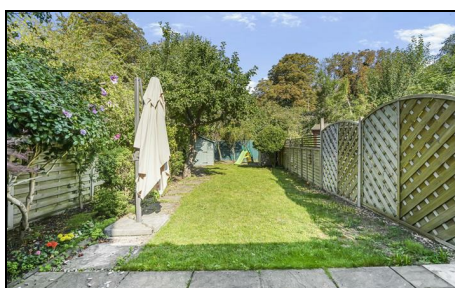


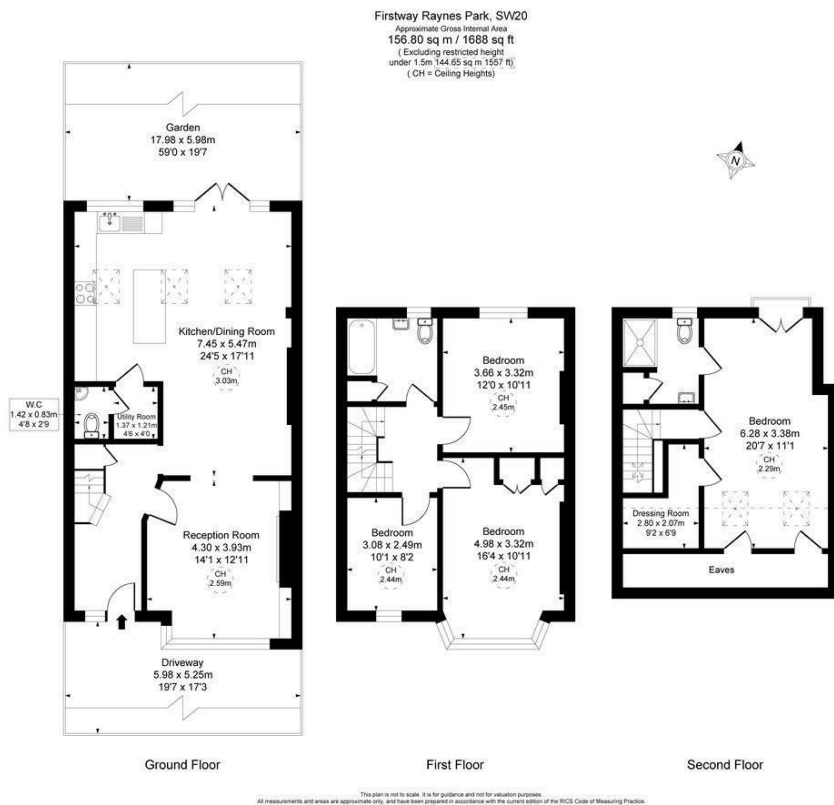
## Firstway Raynes Park, SW20 0JD

**£1,075,000 Freehold**

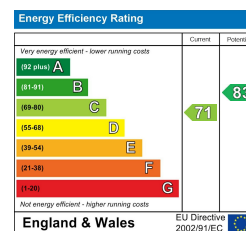


**This is a fantastic 1,688 sqft/156.8 sqm FOUR DOUBLE BEDROOM, TWO BATHROOM fully extended 1930's Blay House with a superb 59'ft garden and off street parking that is perfectly located on a central, yet secluded cul-de-sac only 0.1 Mile from Raynes Park Station and High Street. There is a spacious entrance hall with understairs storage, a large reception room with plantation shutters and an ornate fireplace, a fabulous, extended kitchen/dining/family room with bi folding doors, utility room and downstairs W.C, three double bedrooms and a family bathroom on the first floor and a stunning principal bedroom with en suite.**





- Four Double Bedroom - Two Bathroom
- 1,688 sqft/156.8 sqm Fully Extended 1930's "Blay" House
- Centrally Located Cul De Sac only 0.1 Mile to Station and High Street
- Fabulous Sized Principal Bedroom with En Suite
- Spacious Reception Room with Plantation shutters and Ornate Fireplace
- Stunning Kitchen/Dining/Family Room with bifold doors
- Utility Room and Downstairs W.C
- Beautiful 59ft rear garden - Off Street Parking to Front
- Council Tax Band - F
- EPC Rating - C



**For Free Mortgage Quote and Best Mortgage Rates, call Ellisons Mortgage Advisor on 0208 944 9595**



Although these particulars are believed to be correct, their accuracy is not guaranteed and they do not form part of any contract.

**Celebrating 30 years  
of successful Sales and  
Lettings in Merton**

