



## Goldhawk Road, W12

£750 Per week

This modern three bedroom apartment offers ample natural light and three bathrooms. The spacious and easy flowing accommodation comprises of an open plan reception room with a modern fitted kitchen and three double bedrooms.

Goldleaf Apartments is well placed for access to the amenities of Goldhawk Road and transport links of Goldhawk Road station and Shepherds Bush Market.

### Features

- Townhouse
- Split Level
- New Build
- Two Bathrooms
- Private Patio
- Ample Storage



## Goldhawk Road, W12

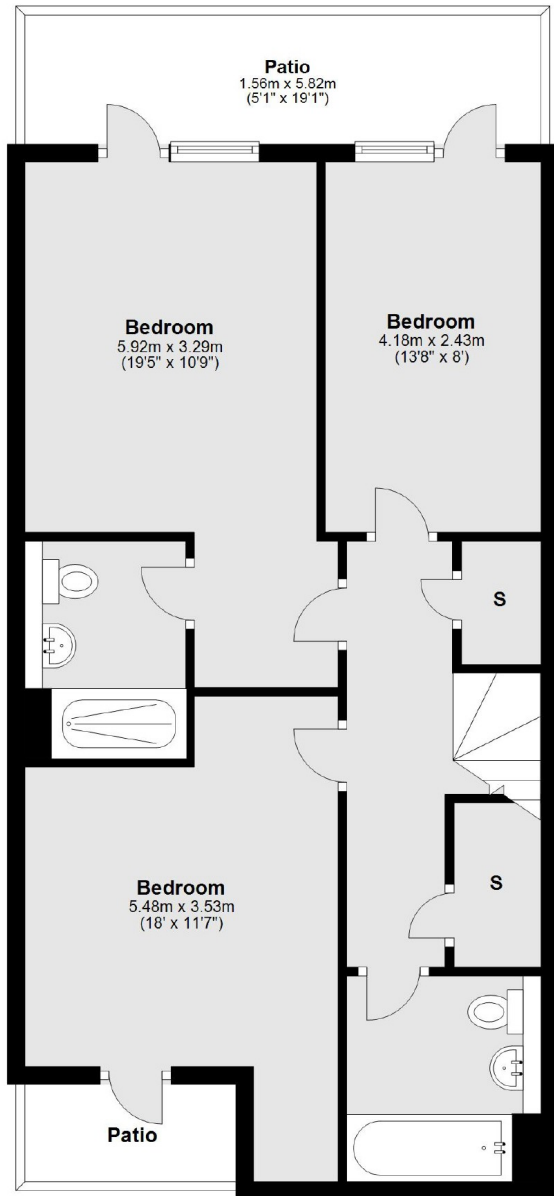
The Goldleaf Apartments sits on the Goldhawk Road in cosmopolitan West London, a re-imagining of an existing building into ten contemporary duplex and lateral apartments.

Boasting high specification with stylish contemporary finishes these properties are also conveniently located in the heart of West London in one of London's most culturally vibrant neighbourhoods and within easy reach of Central London, Heathrow Airport and Underground stations.

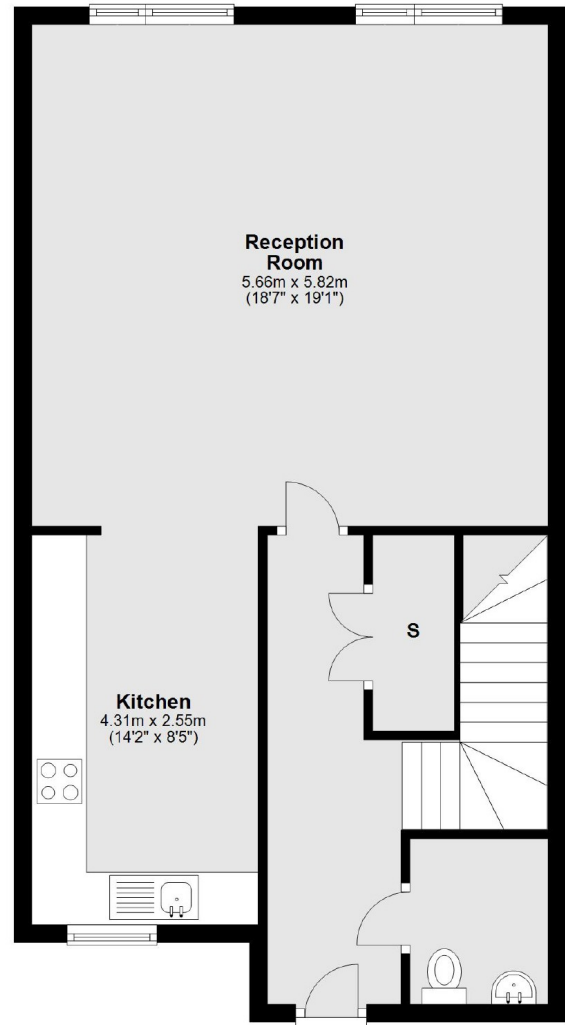


# Goldhawk Road, London, W12

## Lower Ground Floor



## Ground Floor



Main area: Approx. 125.5 sq. metres (1350.4 sq. feet)  
Plus patio, approx. 12.0 sq. metres (129.7 sq. feet)