

Location:

Anderson Close is nearby to both North Acton tube station Acton Town (Central Line) & Acton Mainline Station (Elizabeth Line). The commuter has easy access to both A40 direct access to Central London.

Key points:

- Studio apartment
- 310 sqft
- Allocated parking space
- Share of freehold
- 14 Minute walk to North Acton station (Central Line)
- Perfect first time buyer or buy to let investment property.
- 12 Minute walk to Acton Mainline station (Elizabeth Line)
- No onward chain
- Modern apartment

Do Better:

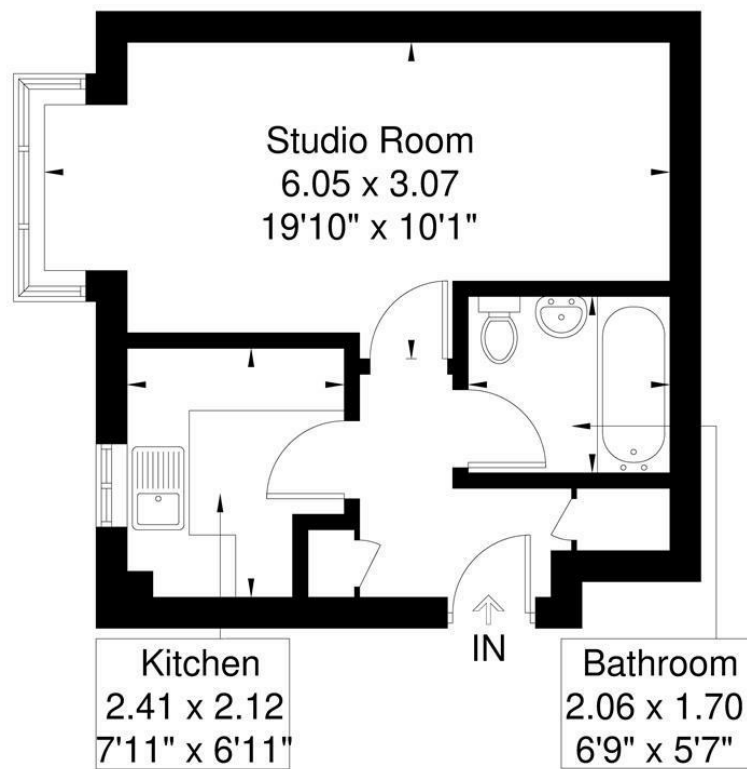
Acton
sales@astonrowe.co.uk

57-59 Churchfield Road,
Acton, London, W3 6AY

020 8992 3600



Anderson Close
Approximate Gross Internal Area = 28.8 sq m / 310 sq ft



Ground Floor

Although every attempt has been made to ensure accuracy, all measurements are approximate. The floorplan is for illustrative purposes only and not to scale.
© www.perspective.co.uk

Energy Efficiency Rating		Environmental Impact (CO ₂) Rating	
Current	Potential	Current	Potential
58	62		

Offers In Excess Of £200,000

Anderson Close, London W3 6YJ

- 1 Reception Rooms
- 0 Bedrooms
- 1 Bathrooms

The current owner says:

The property benefits from having its own allocated parking space, share of freehold and offers no onward chain.

We are pleased to present, this modern studio apartment in good condition set within a private development in Acton. This property is situated on the ground floor and has a separate modern kitchen and reception/bedroom and a modern bathroom. Further benefits include allocated parking, share of freehold and no onward chain. This property is only a short distance to North Acton (Central Line Zone 2) and Acton Mainline Station (Elizabeth Line) This property is ideal for first time buyer or a buy to let investor.

The Elizabeth Line is only a short walk from Anderson Close and the estimated train times from Acton Mainline station are:

- Bond Street - 9 minutes.
- Tottenham Court Road - 11 minutes.
- Liverpool Street - 16 minutes.
- Stratford Station - 25 minutes.
- Canary Wharf Station - 23 minutes.
- Heathrow - Between 18 minutes - 26 minutes for T2/3/4 and 5.
- Reading Station - 46 minutes.



What's better:

A wonderful studio apartment in W3.

