



Sparkes Way, Feltwell, Thetford, IP26 4BX

welcome to

Sparkes Way, Feltwell, Thetford

An attractive Feltwell chalet with NO ONWARD CHAIN! Offering GENEROUS LIVING SPACE, three bedrooms, AMPLE PARKING, garage, enclosed rear garden and PLENTY OF SCOPE TO PERSONALISE throughout - ideal for families looking to put down roots in a highly desirable Norfolk village!

Summary

Offered with no onward chain and positioned in the heart of the ever popular Norfolk village of Feltwell, this spacious semi detached chalet reveals far more than first impressions suggest. Enjoying an enviable setting with village amenities moments away, and excellent access to Brandon and Downham Market - with supermarkets, schooling and mainline services to Cambridge, Norwich and London Kings Cross - this is a superb place to put down roots.

Set on a generous plot, the home immediately impresses with strong kerb appeal and ample off road parking. Inside, the accommodation has been lovingly maintained, yet offers exciting scope to modernise and truly make your own. A welcoming entrance hall flows into a bright, dual aspect living/dining room, a well equipped kitchen and an adjoining room ideal as a utility space or easily reimagined as a garden room.

Upstairs, three well sized bedrooms provide excellent family space, accompanied by a spacious four piece family bathroom. Outside, the rear garden continues the sense of possibility - an expansive, versatile space perfectly suited to family life, creativity or future landscaping ideas.

The Accommodation

Entrance door to:

Entrance Hall

With door to front, built in storage cupboard and radiator.

Lounge

With window to front and radiator.

Dining Room

With double doors leading out to the rear garden and radiator.

Kitchen

With a range of fitted kitchen units at wall and base level with work surface over, inset sink tap with mixer tap over, space and plumbing for washing machine, space for tumble dryer, space and point for oven, space for fridge/freezer, door to rear and window to rear.

Utility Room

With dual aspect doors to both the rear and side and power and light connected.

First Floor Landing

With access to the loft space and built in storage cupboard.

Bedroom One

With window to front and radiator.

Bedroom Two

With hatch leading to eaves storage, window to rear and radiator.

Bedroom Three

With window to front and radiator.





Bathroom

With W.C, wash hand basin with taps over, bath, shower cubicle with shower attachment over and two windows to rear.

Outside

Front Garden

To the front of the property, there is a low maintenance front garden with a range of mature plants throughout, a shingled area for off road parking and a lengthy concrete driveway, providing both further space for parking and access to:

Garage

Rear Garden

To the rear, the enclosed garden is largely laid to lawn with a paved patio area and various shrub and floral borders throughout.

Agents Note

Please note that the sale of this property is subject to Grant of Probate. Please contact the Branch for further details regarding any potential timeframes involved.

Agents Note

Please note that this property is served by oil fired central heating. Please contact the Branch for more details.



check out more properties at williamhbrown.co.uk



welcome to

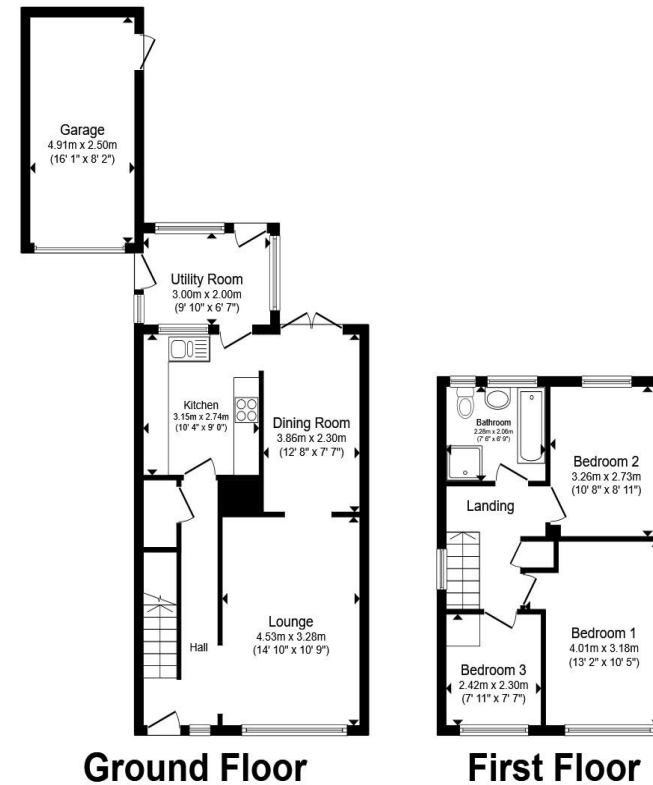
Sparkes Way, Feltwell, Thetford

- Sold With No Onward Chain!
- Well Presented Semi-Detached Chalet
- Ample Off Road Parking and Garage to Front
- Sunny Garden to Rear with Scope to Personalise
- Bright & Spacious Living/Dining Room
- Kitchen with Adjoining Utility Space
- Three Good Sized Bedrooms
- Highly Regarded Norfolk Village Location

Tenure: Freehold EPC Rating: D

Council Tax Band: B

£240,000



Total floor area 100.8 m² (1,085 sq.ft.) approx

This floor plan is for illustrative purposes only. It is not drawn to scale. Any measurements, floor areas (including any total floor area), openings and orientation are approximate. No details are guaranteed, they cannot be relied upon for any purpose and they do not form part of any agreement. No liability is taken for any error, omission or misstatement. A party must rely upon its own inspection(s). Powered by www.propertybox.io


william
h brown

check out more properties at williamhbrown.co.uk



Property Ref:
BRD111201 - 0001

1. MONEY LAUNDERING REGULATIONS Intending purchasers will be asked to produce identification documentation at a later stage and we would ask for your co-operation in order that there is no delay in agreeing the sale. 2. These particulars do not constitute part or all of an offer or contract. 3. The measurements indicated are supplied for guidance only and as such must be considered incorrect. Potential buyers are advised to recheck measurements before committing to any expense. 4. We have not tested any apparatus, equipment, fixtures or services and it is in the buyers interest to check the working condition of any appliances. 5. Where an EPC, or a Home Report (Scotland only) is held for this property, it is available for inspection at the branch by appointment. If you require a printed version of a Home Report, you will need to pay a reasonable production charge reflecting printing and other costs. 6. We are not able to offer an opinion either written or verbal on the content of these reports and this must be obtained from your legal representative. 7. Whilst we take care in preparing these reports, a buyer should ensure that his/her legal representative confirms as soon as possible all matters relating to title including the extent and boundaries of the property and other important matters before exchange of contracts.

William H Brown is a trading name of Sequence (UK) Limited which is registered in England and Wales under company number 4268443, Registered Office is Cumbria House, 16-20 Hockliffe Street, Leighton Buzzard, Bedfordshire, LU7 1GN. VAT Registration Number is 500 2481 05.


william h brown



01842 811058



Brandon@williamhbrown.co.uk



18-20 High Street, BRANDON, Suffolk, IP27
0AQ



williamhbrown.co.uk