



Odiham Close
17 - 24

Connells

Odiham Close
Southampton



Property Description

A well-presented one-bedroom upstairs maisonette in a popular residential location in Southampton, offering the benefit of a private entrance and a well-proportioned layout.

The property features a bright and spacious living room, providing plenty of room for both relaxing and dining. A separate fitted kitchen offers a practical cooking space, while the double bedroom is generously sized and benefits from built-in storage.

The accommodation is completed by a shower room, conveniently positioned off the landing.

Overall, this property provides a comfortable and low-maintenance home, ideal for first-time buyers, downsizers, or investors seeking a property with a good balance of space and privacy.



Flat Entrance

Living Room

14' 5" x 13' 10" (4.39m x 4.22m)

Kitchen

12' 2" x 5' 10" (3.71m x 1.78m)

Bedroom

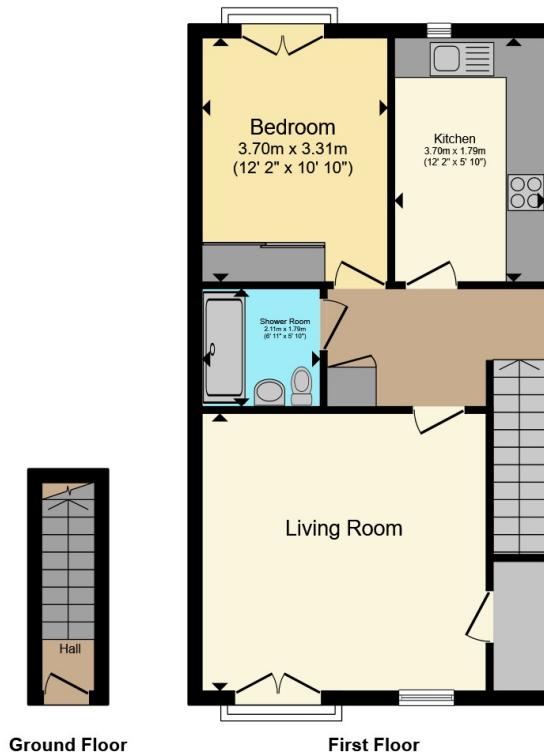
12' 2" x 10' 10" (3.71m x 3.30m)

Shower Room

6' 11" x 5' 10" (2.11m x 1.78m)







Total floor area 54.0 m² (581 sq.ft.) approx

This floor plan is for illustrative purposes only. It is not drawn to scale. Any measurements, floor areas (including any total floor area), openings and orientation are approximate. No details are guaranteed, they cannot be relied upon for any purpose and they do not form part of any agreement. No liability is taken for any error, omission or misstatement. A party must rely upon its own inspection(s). Powered by www.propertybox.io



To view this property please contact Connells on

T 02380 789 351
E shirley@connells.co.uk

409 Shirley Road Shirley
 SOUTHAMPTON SO15 3JD

EPC Rating:
 Awaited

Council Tax
 Band: A

Service Charge: Ask
 Agent

Ground Rent:
 Ask Agent

Tenure: Leasehold

view this property online connells.co.uk/Property/SSR313002

This is a Leasehold property. We are awaiting further details about the Term of the lease. For further information please contact the branch. Please note additional fees could be incurred for items such as Leasehold packs.



1. MONEY LAUNDERING REGULATIONS Intending purchasers will be asked to produce identification documentation at a later stage and we would ask for your co-operation in order that there will be no delay in agreeing the sale. 2. These particulars do not constitute part or all of an offer or contract. 3. The measurements indicated are supplied for guidance only and as such must be considered incorrect. Potential buyers are advised to recheck measurements before committing to any expense. 4. We have not tested any apparatus, equipment, fixtures, fittings or services and it is in the buyers interest to check the working condition of any appliances.

Connells Residential is registered in England and Wales under company number 1489613, Registered Office is Cumbria House, 16-20 Hockliffe Street, Leighton Buzzard, Bedfordshire, LU7 1GN. VAT Registration Number is 500 2481 05.

See all our properties at www.connells.co.uk | www.rightmove.co.uk | www.zoopla.co.uk

Property Ref: SSR313002 - 0003