



Webbs

Helping people move since 1994

Teddesley Way | Staffordshire | WS12 4UX

Offers In The Region Of £265,000

 **Webbs**
estate agents

Summary

**** GREAT LOCATION ** THREE BEDROOMS ** EN-SUITE TO MASTER ** SPACIOUS LOUNGE DINER ** CONVERTED GARAGE ** ENCLOSED REAR GARDEN ** EXCELLENT SCHOOLS AND TRANSPORT LINKS ** IDEAL FOR CANNOCK CHASE ****

Webbs Estate Agents are pleased to offer for sale a spacious, modern-style semi-detached home, offering easy access to excellent schools and transport links, local shops and amenities, and offering easy access to Cannock Chase.

In brief consisting of an entrance hallway, kitchen, spacious lounge diner with stairs rising to the first floor, the garage has been converted and offers a spacious second reception room, the large conservatory which overlooks the rear garden.

To the first floor there are three bedrooms, family bathroom and en-suite shower room to the master bedroom, externally the property has an enclosed rear garden with side access to the front driveway.

Viewing advised please call 01543 468846

Key Features

- MODERN STYLE SEMI DETACHED HOME
- EXCELLENT SCHOOLS AND TRANSPORT LINKS
- IDEAL FOR CANNOCK CHASE
- EN-SUITE SHOWER ROOM
- ENCLOSED REAR GARDEN
- SPACIOUS LOUNGE DINER
- CONSERVATORY
- THREE BEDROOMS
- CONVERTED GARAGE
- EARLY VIEWING ADVISED

Rooms and Dimensions

AWAITING VENDOR APPROVAL

ENTRANCE HALLWAY

KITCHEN

10'7" x 6'11" (3.25m x 2.13m)

RECEPTION ROOM TWO

14'11" x 7'3" (4.56m x 2.21m)

LOUNGE DINER

18'0" x 13'5" (5.51m x 4.10m)

CONSERVATORY

16'7" m x 8'5" (5.08 m x 2.57m)

LANDING

BEDROOM ONE

12'3" m x 11'1" (3.74 m x 3.40m)

EN-SUITE SHOWER ROOM

6'9" x 4'6" (2.07 x 1.39)

BEDROOM TWO

12'4" x 9'1" (3.76m x 2.79m)

BEDROOM THREE

8'0" x 6'11" (2.44m x 2.13m)

FAMILY BATHROOM

6'9" x 6'5" (2.06m x 1.98m)

ENCLOSED REAR GARDEN

FRONT DRIVEWAY

IDENTIFICATION CHECKS - C





Webbs
Helping people move since 1994



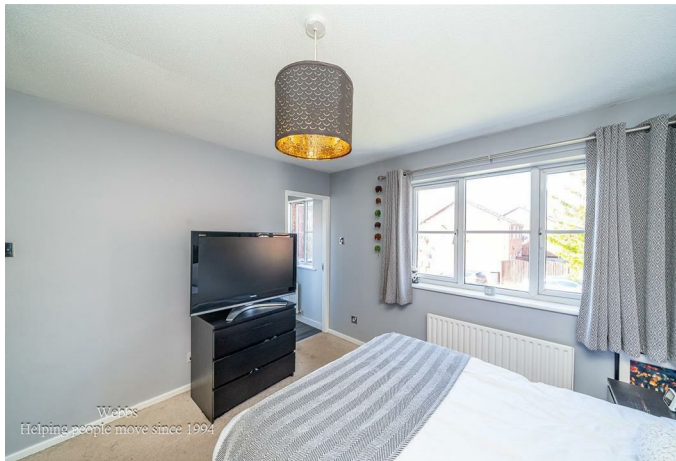
Webbs
Helping people move since 1994



Webbs
Helping people move since 1994



Webbs
Helping people move since 1994



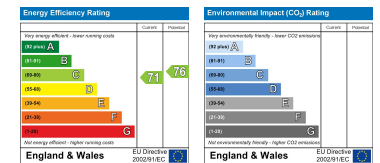
Webbs
Helping people move since 1994



Webbs
Helping people move since 1994



Webbs Estate Agents - endeavour to maintain accurate depictions of properties in Virtual Tours, Floor Plans and descriptions, however, these are intended only as a guide and purchasers must satisfy themselves by personal inspection.



153 Avon Road, Cannock, WS11 1LF

Tel: 01543 468846 | Email: sales@webbsestateagents.co.uk | www.webbestateagents.co.uk

