

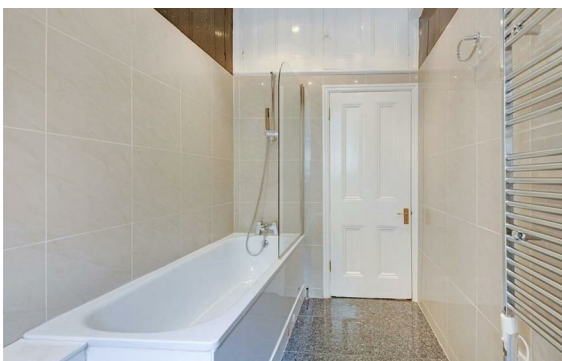


Melcombe Place, Marylebone, London, NW1

Rent £1,355 Per Month

3 Bed | 3 Bath | 1 Reception

Please call us on 020 7724 2233 or email us info@newingtonstates.com to book a viewing.



A generously sized three-bedroom apartment in a well-connected Marylebone location offering well-balanced living space, ideal for families or sharers.

Ideally located in Marylebone, with excellent transport links via Marylebone Station, Baker Street Station, Edgware Road Station, and Paddington Station. The open green spaces of Regent's Park are also within easy reach.

EPC rating: C

Energy Efficiency Rating: C

Agents Note: Whilst every care has been taken to prepare these particulars, they are for guidance purposes only. All measurements are approximate and are for general guidance purposes only and whilst every care has been taken to ensure their accuracy, they should not be relied upon and potential buyers/tenants are advised to recheck the measurements.

NEWINGTON
— ESTATES —

60 Upper Montagu Street

London

W1H 1SN

020 7724 2233

info@newingtonestates.com

<http://www.newingtonestates.com>