



3

Bedrooms



1

Bathroom



- Mid Terrace Home
- Lounge
- Kitchen
- Dining Room
- Three Bedooms
- Bathroom
- UPVC Double Glazing
- Gas Central Heating
- Off Road Parking
- Rear Garden

Wilkinson SLM are delighted to offer for sale a well presented terrace home located close to Tewkesbury Town Centre.

You enter the home via a large entrance porch, perfect for storing coats and shoes! From here a door opens to the entrance hall with stairs leading to the first floor and doors to the lounge and kitchen. The large lounge room has a feature fireplace and double folding doors that open to the dining room. This light and airy room is fantastic for entertaining and has patio doors opening to the rear garden. The dining room also opens to the kitchen which has a and electric oven and hob, space for fridge freezer, space for a dishwasher, a pantry and a handy understairs storage cupboard.

On the first floor are two large double bedrooms, one double bedroom and a family bathroom. The main bedroom here is so light and spacious!

To the rear of the home is a delightful wild garden with an array of shrubs and flowers and a paved patio seating area. The perfect setting for those lovely sunny summer days!

Warwick Place is further complemented by UPVC double glazing, gas central heating and ample off road parking to the front.

Lounge 22' 1" x 11' 10" (6.73m x 3.61m)
maximum measurements

Dining Room 16' 8" x 10' 11" (5.08m x 3.33m)

Kitchen 14' 6" x 8' 6" (4.42m x 2.59m)
maximum measurements

Bedroom One 13' 11" x 12' 0" (4.24m x 3.66m)

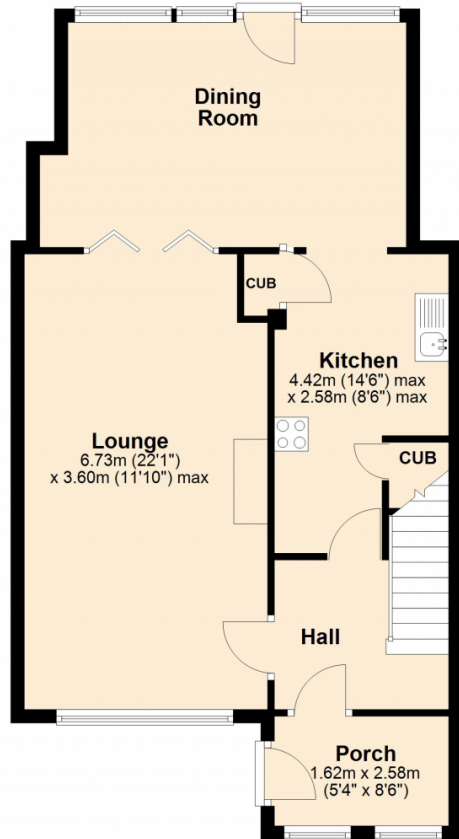
Bedroom Two 13' 9" x 9' 10" (4.19m x 3.00m)
maximum measurements

Bedroom Three 8' 7" x 8' 6" (2.62m x 2.59m)

Bathroom 8' 7" x 5' 6" (2.62m x 1.68m)

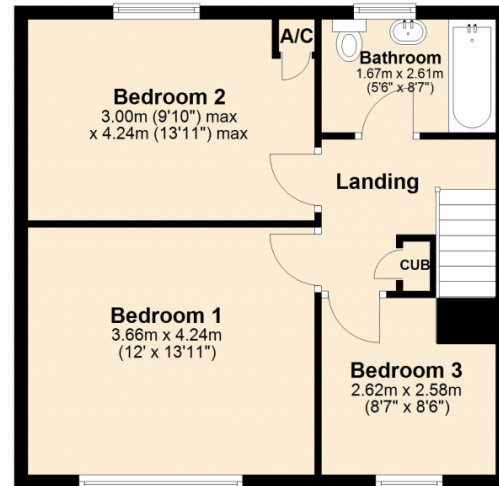
Ground Floor

Approx. 63.9 sq. metres (687.5 sq. feet)




First Floor

Approx. 45.5 sq. metres (490.2 sq. feet)



Total area: approx. 109.4 sq. metres (1177.7 sq. feet)

Energy Efficiency Rating

	Current	Potential
Very energy efficient - lower running costs		
(92+) A		
(81-91) B		86
(69-80) C	69	
(55-68) D		
(39-54) E		
(21-38) F		
(1-20) G		
Not energy efficient - higher running costs		
England, Scotland & Wales		EU Directive 2002/91/EC 

Address: 28 Warwick Place, GL20

