



Pembroke Road, W8

£1,375,000

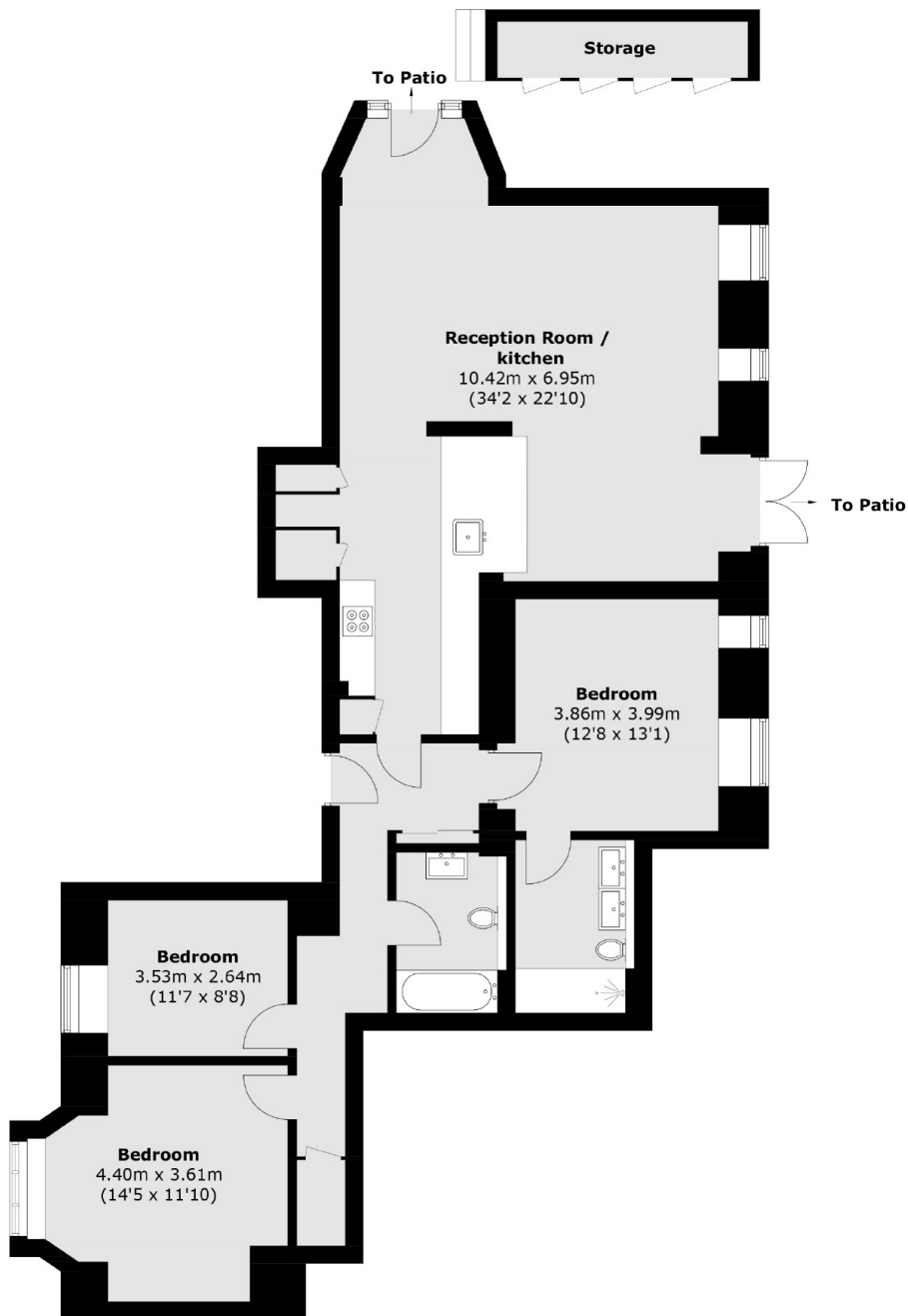
Located in a prestigious portered building, this beautifully refurbished three-bedroom apartment offers exceptional living space, complemented by a private outdoor area. Finished to an immaculate standard throughout, the property also benefits from access to well-maintained communal gardens and a fully equipped residents' gym.

Marlborough Court is located close to all local amenities and transport links of both Earl's Court and High Street Kensington allowing easy access to central London.

Features

- Immaculate Finish
- Open-Plan Living
- Private Outdoor Space
- Portered Building
- Abundance Of Storage
- Close To Amenities

Pembroke Road, London, W8



Total area (approx.): 119.1 sq. m (1,282.0 sq. ft)
Storage : 4.0 sq. m (43.0 sq. ft)