



20 New Street , Worcester, WR1 2DP

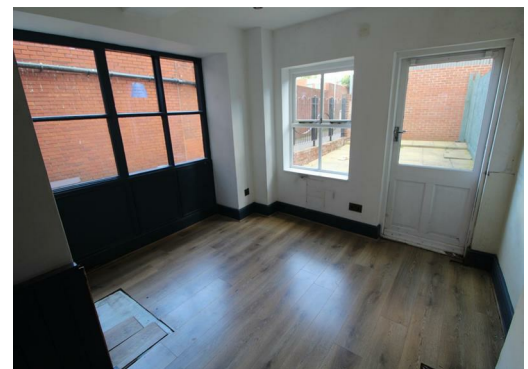
£9,600 Per Annum



A ground floor, open-plan retail premises, complemented by a private rear courtyard area. The unit features a combination of timber wall panelling, painted elevations, and stylish brick-effect wallpaper finishes, creating a characterful and welcoming environment. The space is further enhanced by durable laminate wood-effect flooring, providing both practicality and aesthetic appeal.

This versatile accommodation is well-suited to retailers, boutique operators, or service-based occupiers seeking a ready-to-occupy space in a convenient location.

The incoming tenant acknowledges that the property is accepted in its current condition, including any existing defects and reasonable wear and tear. These conditions have been noted and agreed upon at the commencement of the lease. At the end of the tenancy, the property must be returned in the same condition as received, allowing for fair wear and tear, and no additional damage or alterations beyond what was originally documented or with Landlord's consent.





Energy Efficiency Rating		Current	Potential	Environmental Impact (CO ₂) Rating		Current	Potential
Very energy efficient - lower running costs				Very environmentally friendly - lower CO ₂ emissions			
(92 plus) A				(92 plus) A			
(81-91) B				(81-91) B			
(69-80) C				(69-80) C			
(55-68) D				(55-68) D			
(39-54) E				(39-54) E			
(21-38) F				(21-38) F			
(1-20) G				(1-20) G			
Not energy efficient - higher running costs				Not environmentally friendly - higher CO ₂ emissions			
England & Wales		EU Directive 2002/91/EC		England & Wales		EU Directive 2002/91/EC	

These particulars, whilst believed to be accurate are set out as a general outline only for guidance and do not constitute any part of an offer or contract. Intending purchasers should not rely on them as statements of representation of fact, but must satisfy themselves by inspection or otherwise as to their accuracy. No person in this firm's employment has the authority to make or give any representation or warranty in respect of the property.