

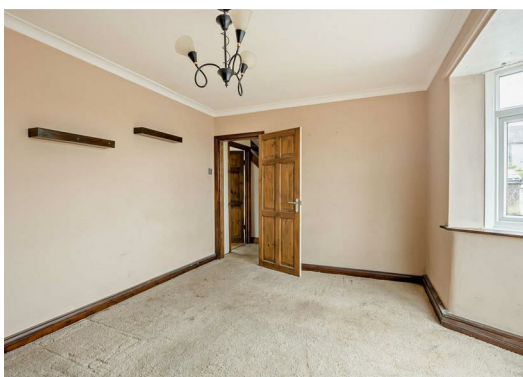


## 23 Sugham Lane, Morecambe, LA3 2DR Offers in excess of £165,000

Situated in a popular residential area of Heysham, this attractive three-bedroom semi-detached home offers well-proportioned accommodation ideal for families, first-time buyers and those looking to upsize. The property enjoys a spacious and versatile layout with bright living areas, a fitted kitchen and three well-sized bedrooms, providing comfortable living throughout.

Externally, the property benefits from private gardens and off-road parking, offering excellent outdoor space for entertaining and family life. Conveniently positioned close to local amenities, reputable schools, transport links and the picturesque Morecambe coastline, this home combines practicality with a desirable location.

Offering fantastic potential and an excellent opportunity to acquire a family home in a sought-after area, early viewing is highly recommended.





**Disclaimer**

1. MONEY LAUNDERING REGULATIONS: Intending purchasers will be asked to produce identification documentation at a later stage and we would ask for your co-operation in order that there will be no delay in agreeing the sale.
2. General: While we endeavour to make our sales particulars fair, accurate and reliable, they are only a general guide to the property and, accordingly, if there is any point which is of particular importance to you, please contact the office and we will be pleased to check the position for you, especially if you are contemplating travelling some distance to view the property.
3. Measurements: These approximate room sizes are only intended as general guidance. You must verify the dimensions carefully before ordering carpets or any built-in furniture.
4. Services: Please note we have not tested the services or any of the equipment or appliances in this property, accordingly we strongly advise prospective buyers to commission their own survey or service reports before finalising their offer to purchase.
5. THESE PARTICULARS ARE ISSUED IN GOOD FAITH BUT DO NOT CONSTITUTE REPRESENTATIONS OF FACT OR FORM PART OF ANY OFFER OR CONTRACT. THE MATTERS REFERRED TO IN THESE PARTICULARS SHOULD BE INDEPENDENTLY VERIFIED BY PROSPECTIVE BUYERS OR TENANTS. NEITHER GOODMOVE NOR ANY OF ITS EMPLOYEES OR AGENTS HAS ANY AUTHORITY TO MAKE OR GIVE ANY REPRESENTATION OR WARRANTY WHATEVER IN RELATION TO THIS PROPERTY.

**Section 21**

Under the terms of the Estate Agency Act 1979 (section 21) please note that the Vendor of this property is a staff member of the Goodmove Group.

Energy Efficiency Rating		
	Current	Potential
Very energy efficient - lower running costs		
(92 plus) <b>A</b>		
(81-91) <b>B</b>		
(69-80) <b>C</b>		
(55-68) <b>D</b>		
(39-54) <b>E</b>		
(21-38) <b>F</b>		
(1-20) <b>G</b>		
Not energy efficient - higher running costs		
<b>England &amp; Wales</b>	EU Directive 2002/91/EC	

Environmental Impact (CO <sub>2</sub> ) Rating		
	Current	Potential
Very environmentally friendly - lower CO <sub>2</sub> emissions		
(92 plus) <b>A</b>		
(81-91) <b>B</b>		
(69-80) <b>C</b>		
(55-68) <b>D</b>		
(39-54) <b>E</b>		
(21-38) <b>F</b>		
(1-20) <b>G</b>		
Not environmentally friendly - higher CO <sub>2</sub> emissions		
<b>England &amp; Wales</b>	EU Directive 2002/91/EC	



Ground Floor 4320 Park Approach, Thorpe Park, Leeds, LS15 8GB

Tel: 0113 892 1166

sales@goodmove.co.uk

www.goodmove.co.uk