



15 The Phelps, Kidlington, OX5 1SP

£1,700 Per Month - 23rd May 2026

- Three bedrooms
- Redecorated and recarpeted throughout
- Rear garden
- Mains gas electricity and water
- Mid terrace
- Gas CH
- EPC rating C/Council Tax Band C
- Unfurnished with white goods
- Single garage
- Flood risk Low/Surface Water Very Low

15 The Phelps, Kidlington OX5 1SP

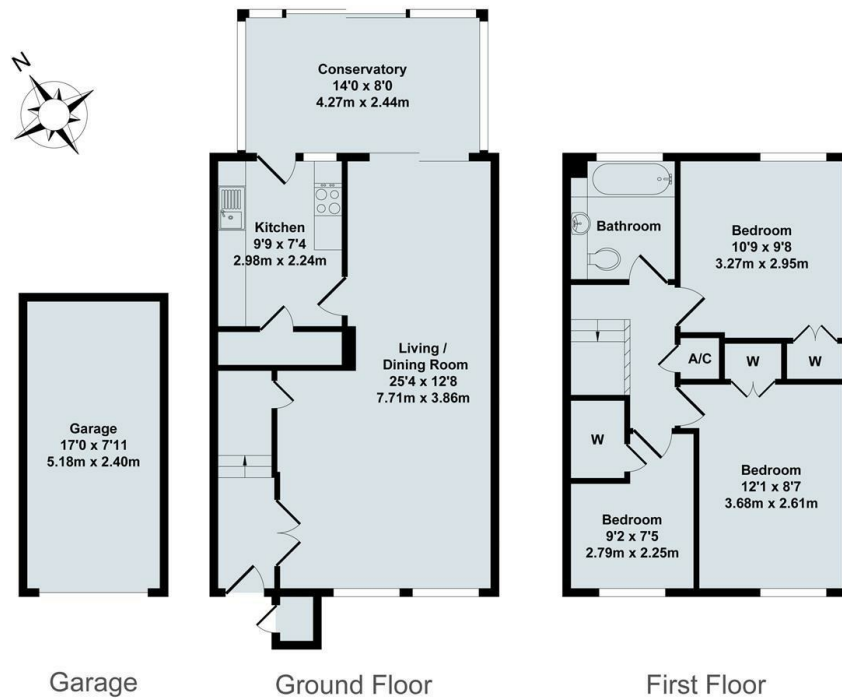
A three bedroom end terrace house in excellent order having been redecorated throughout and with new flooring. Available unfurnished. Two double bedrooms with fitted wardrobes, Single bedroom with fitted cupboard, Bathroom with shower over, Living/Dining room, Fully fitted Kitchen with electric oven, electric hob, fridge/freezer and washing machine. Conservatory. Gas CH. Rear garden. On street parking and single garage.



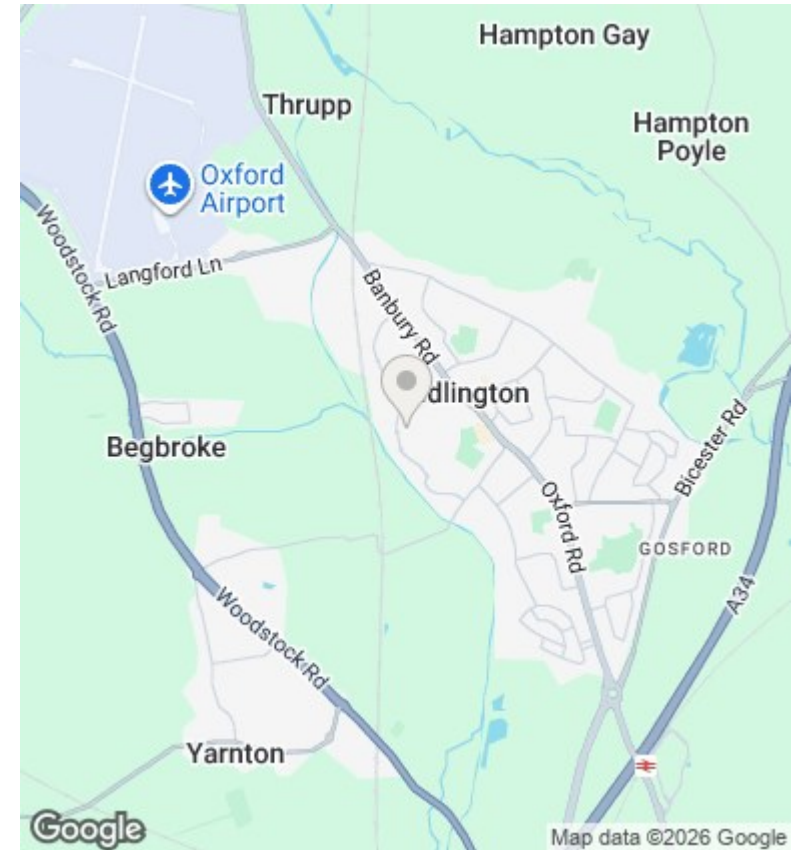
Council Tax Band: C







Total Approx. Floor Area 1076 Sq.Ft. (100.0 Sq.M.)
 All items illustrated on this plan are included in the "Total Approx Floor Area"



Directions

Viewings

Viewings by arrangement only. Call 01865 515900 to make an appointment.

Council Tax Band

C

Energy Efficiency Rating		Current	Potential
<i>Very energy efficient - lower running costs</i>			
(92 plus)	A		
(81-91)	B		89
(69-80)	C	69	
(55-68)	D		
(39-54)	E		
(21-38)	F		
(1-20)	G		
<i>Not energy efficient - higher running costs</i>			
England & Wales		EU Directive 2002/91/EC	