



Uxbridge Road, W13 £495,000

A beautifully presented two bedroom apartment set within a conversion of a former bank. Finished to a high specification the apartment blends modern living with character features. The apartment has high ceilings and large windows flooding the space with natural light. The open plan kitchen /living/dining is fitted with sleek modern units and integrated appliances. Both bedrooms are generously proportioned complimented by a contemporary bathroom. *Images of show home*

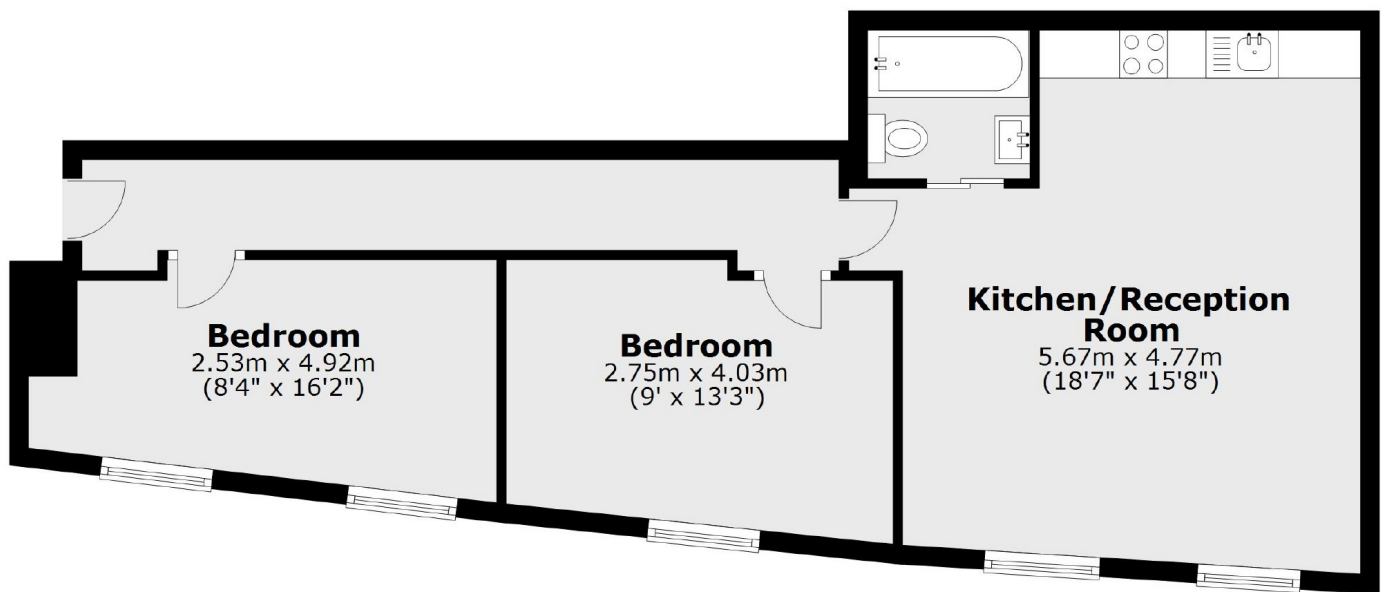
Sterling House is perfectly located in the heart of West Ealing just a few moments from West Ealing Station and the local shops.

Features

- 3 Minutes To West Ealing Station
- Close To Shops
- High Specification
- Two Bedrooms
- Energy Efficient

Uxbridge Road,
London, W13

Ground Floor



Total area: approx. 58.1 sq. metres (625.1 sq. feet)