



## ST. CHARLES SQUARE, W10

£900 pcm

*\*SHORT LET\** This extremely unique split level two bedroom flat is located in the heart of Notting Hill. The property has wood flooring throughout, a separate kitchen and a private patio garden.

- High Ceilings
- Duplex
- Private Patio
- Separate Kitchen
- Two Bedrooms
- EPC Rating C



## ABOUT THE HOME

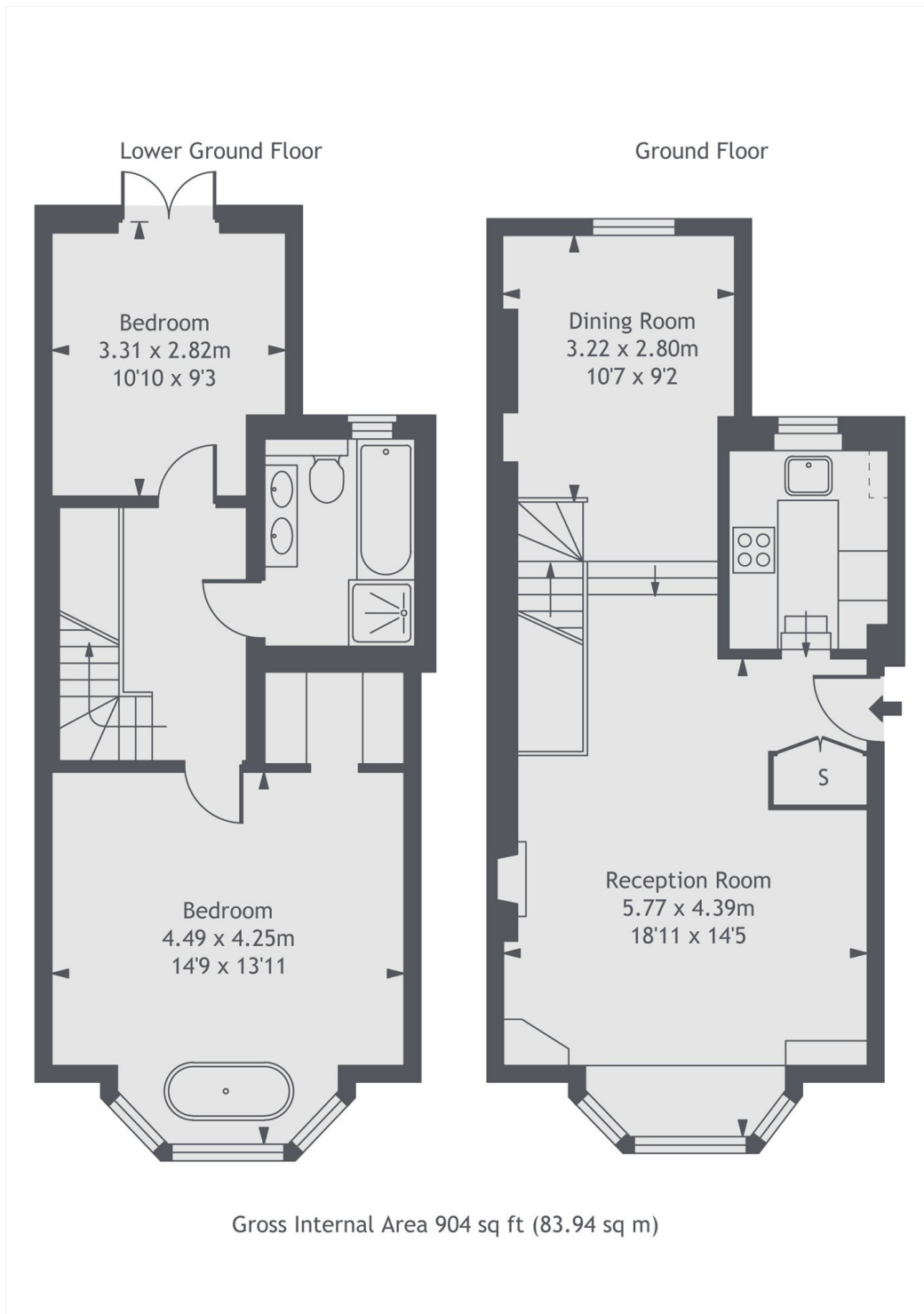
This property offers stylish, well-proportioned accommodation arranged over several levels.

Entering through a generous reception room with a large bay window, the ground floor features a modern kitchen and separate dining room. Set on the lower ground floor are two bedrooms, a recently refurbished bathroom and bi-fold doors opening onto a southeast-facing garden.

The property is situated close to all the local amenities of Notting Hill, including Ladbroke Grove station and the ever popular Portobello Road.







**LiFE RESIDENTIAL**

203 Trentham Court, Victoria  
Road, London, W3 6BT  
Sales: 020 3668 1112  
Lettings: 020 3668 1111

Energy Rating: C. We aim to make our particulars both accurate and reliable. However they are not guaranteed; nor do they form part of an offer or contract. If you require clarification on any points then please contact us, especially if you're traveling some distance to view. Please note that appliances and heating systems have not been tested and therefore no warranties can be given as to their good working order.