



Captain Cook Close, Chalfont St Giles, Buckinghamshire HP8 4DS

£590,000

SIMON COLMAN
exp



simoncolman.expuk.com



simoncolman@expuk.com



01494 871991



Council Tax Band: E

EPC: C

Tenure: Freehold

Property Type: End of Terrace House

Bedrooms: 3

Bathrooms: 1

Receptions: 2

Quote REF: SC-1620 Simon Colman presents an end of terrace family house backing onto open countryside with lovely view across farmland.



- THREE DOUBLE BEDROOMS
- POTENTIAL TO EXTEND STPP
- GARAGE & CARPORT
- REQUIRES MODERNISATION
- QUIET CUL DE SAC
- CONVENIENT FOR VILLAGE & SCHOOLS
- BACKING ONTO OPEN COUNTRYSIDE
- LOVELY VIEWS
- NO ONWARD CHAIN



THE PROPERTY

Covered Entrance to Entrance Hall with a door to the Garage.

Sitting -Dining Room with gas coal fire with stone and timber surround, sliding door to

Sun Room with tiled floor and sliding door to terrace and garden.

Kitchen - Breakfast Room fitted with floor and wall cupboards, drawers, oven, grill, gas hob, extractor, space for dishwasher, fridge and washing machine. Cupboard containing gas fired central heating boiler, deep understairs cupboard.

On the First Floor

Landing with linen cupboard. Access via pull down ladder to partly boarded roof space.

Bedroom 1 range of fitted wardrobe cupboards, lovely views across open countryside.

Bedroom 2 fitted wardrobe cupboard, vanity basin with drawers beneath.

Bedroom 3 with views over farmland.

Bathroom panel enclosed bath, pedestal basin, low level WC, tiled walls.



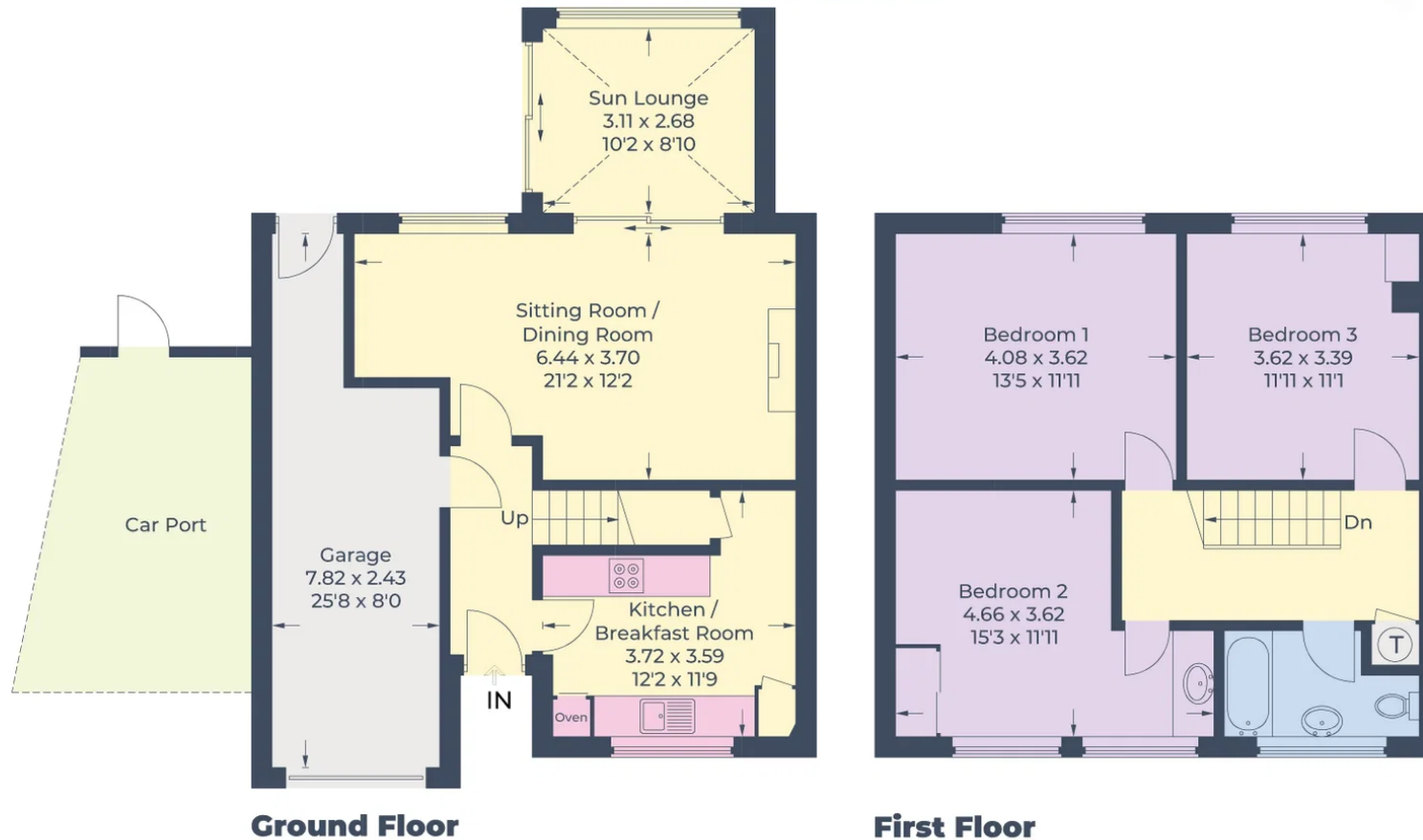
OUTSIDE

Integral Garage with up and over door, light and power. Access to garden. Carport.

The front garden has a driveway and parking space for two or three cars. There is access to one side to the rear garden.

Level and well enclosed, the rear garden has flower beds and shrubs and is approached by a terrace with an ornamental pond to the side. Garden Shed.

Approximate Gross Internal Area
 Ground Floor = 65.2 sq m / 702 sq ft
 First Floor = 56.2 sq m / 605 sq ft
 Total = 121.4 sq m / 1,307 sq ft
 (Including Garage / Excluding Carport)



Ground Floor

First Floor

Illustration for identification purposes only,
 measurements are approximate, not to scale.
 © CJ Property Marketing Produced for Simon Colman eXp



01494 871 991

simon.colman@exp.uk.com

eXp World UK Limited is a registered company at C/O Corporation Service Company (Uk) Limited, 114 St. Martin's Lane, London, WC2N 4BE.

Registered company Number is 12016573. VAT registration number is 327 4120 29.

