



Field Street

Salford



In Excess of £220,000

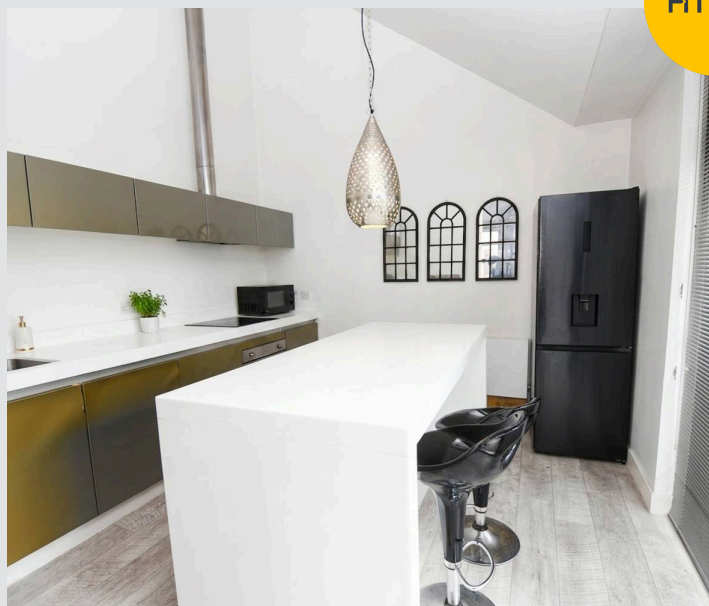
# Field Street

Salford

Take a look at this CHAIN FREE TWO DOUBLE BEDROOM HOME situated on the popular 'CHIMNEY POT PARK' development and walking distance to SALFORD QUAYS/MEDIA CITY and Langworthy TRAM STOP.

Council Tax band: B

- CHAIN FREE end terraced property on the popular Chimney Pot Park development
- Stunning fitted kitchen complete with a centre island
- Two bathrooms (one being 'Jack and Jill' style)
- Two generous sized bedrooms
- Sun-drenched garden terrace
- Perfect for first time buyers and investors alike
- Walking distance to Salford Quays/Media City and Langworthy tram stop
- Stunning 21ft lounge complete with a vaulted ceiling
- Early viewing advised



**Entrance Hallway**

**Lounge**

21' 0" x 13' 7" (6.41m x 4.15m)

**Kitchen**

11' 3" x 11' 0" (3.43m x 3.35m)

**Landing**

**Bedroom One**

11' 5" x 10' 9" (3.48m x 3.27m)

**En-Suite**

7' 2" x 6' 9" (2.18m x 2.06m)

**Bedroom Two**

10' 9" x 10' 9" (3.27m x 3.27m)

**Bathroom**

5' 9" x 5' 0" (1.75m x 1.52m)







## Hills | Salfords Estate Agent

Hills Residential, Sentinel House Albert Street - M30 0SS

0161 707 4900

[sales@hills.agency](mailto:sales@hills.agency)

[www.hills.agency/](http://www.hills.agency/)



By law, we are required to conduct anti-money laundering checks on all potential buyers and sellers. In line with HMRC guidelines, our trusted partner, Coadjute, will securely manage these checks on our behalf. A non-refundable fee of £45 + VAT per person will apply, and Coadjute will handle the payment. Once an offer is accepted, Coadjute will send a secure link for you to complete the biometric checks. These checks must be completed before we can send the memorandum of sale to all parties. PLEASE NOTE: The Agent has not tested any equipment, fixtures, fittings or services so cannot verify that they are in working order or fit for the purpose. References to the properties tenure are based on information supplied by the seller. You are advised to check the availability of this property before travelling any distance to view. Every effort has been made to ensure these particulars are correct and not misleading but their accuracy is not guaranteed nor do they form part of any contract.