



Guide Price
£500,000

Leasehold

2x  1x  1x 

**Murchison Road, Leyton,
E10**

OVER 60?

Secure this property
for up to **59% less!**

 **DOUGLAS
ALLEN**
Helping you move forwards



Main features

- Spacious lounge
- Original features
- Excellent condition
- Fantastic location
- All local amenities literally on your doorstep
- Must be seen!

Accommodation

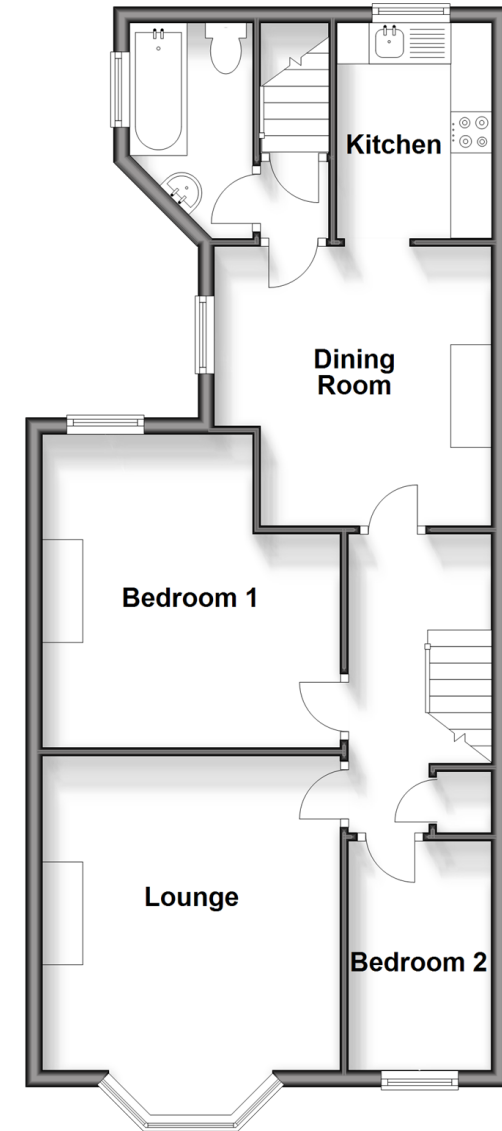
FIRST FLOOR

Lounge: 10'4 x 9'10 (3.15m x 3.00m)
 Diner: 10'10 x 9'10 (3.30m x 3.00m)
 Kitchen: 8'2 x 6'6 (2.49m x 1.98m)
 Bedroom 1: 12'2 x 12'1 (3.71m x 3.69m)
 Bedroom 2: 8'6 x 8'4 (2.59m x 2.54m)
 Bathroom

OUTSIDE

Rear Garden

First Floor
 Approx. 61.9 sq. metres (665.8 sq. feet)



Call Walthamstow - 020 8509 0092 ■ douglasallen.co.uk

- A private rental licensing scheme applies to some properties in this area, please contact us before proceeding
- Legal advice should be taken to verify fixtures/fittings, planning, alterations and/or lease details
- Appliances & services are untested, dimensions are approximate and floor plans are not to scale
- Through a Homewise Home For Life Plan people aged 60+ can secure this property for up to 50% less, by purchasing a Lifetime Lease.



53117535/20251122/KS/SC