



Old Marylebone Road, NW1

£775,000

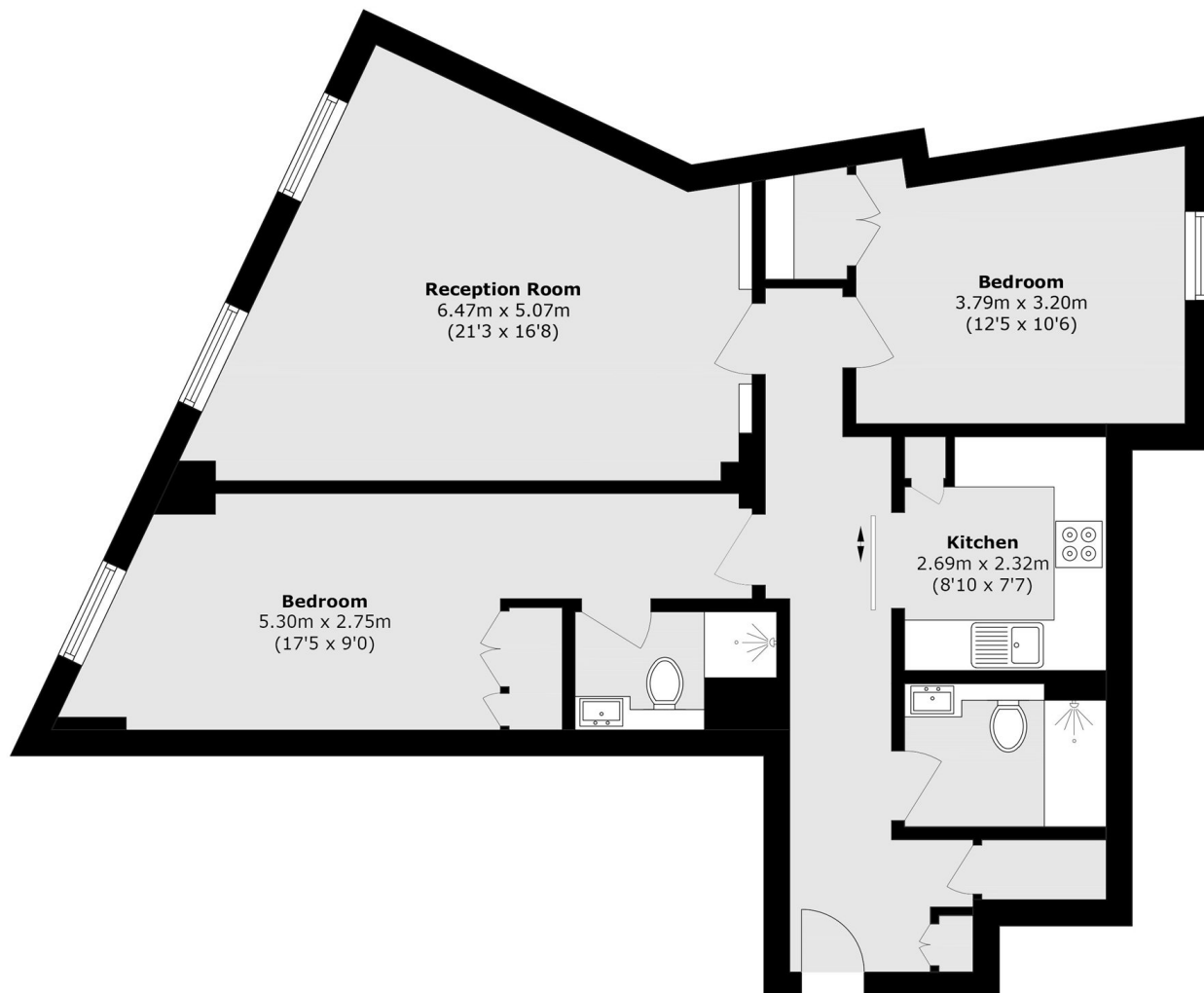
A two double bedroom, two bathroom apartment located in a modern apartment building in west Marylebone. With secure under building parking and a long lease.

Located conveniently for Edgware Road Underground Station and the waterside amenities of Paddington Basin. Marylebone Station, Baker Street are within walking distance.

Features

- Two Double Bedrooms
- Main Bedroom En Suite
- Reception- Dining Room
- Under Building Parking Space
- Passenger Lift & Day Porter
- Long Lease To 2996

Old Marylebone Road, London, NW1



Second Floor

Total area (approx.): 82.5 sq. m (888.0 sq. ft)