



Guide Price

£475,000

Freehold

4x  3x  1x 

**Radwinter Close,
Wickford, Essex, SS12**

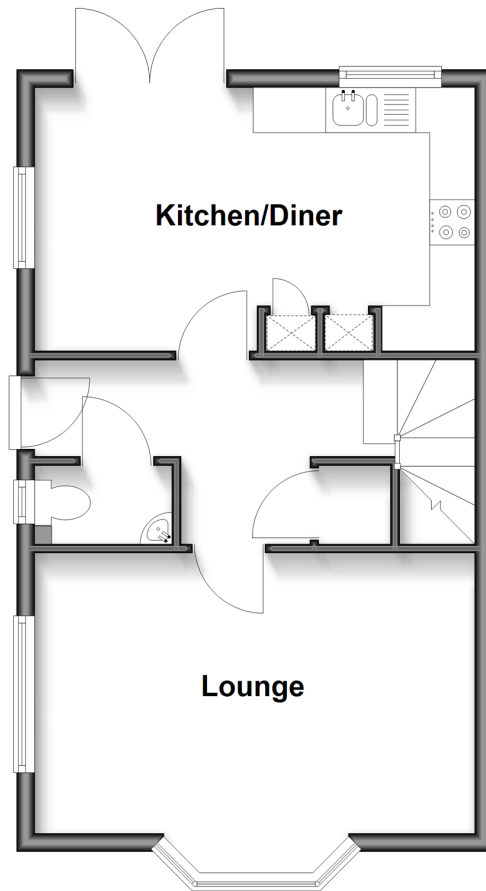
OVER 60?

Secure this property
for up to **59% less!**

 **DOUGLAS
ALLEN**
Helping you move forwards

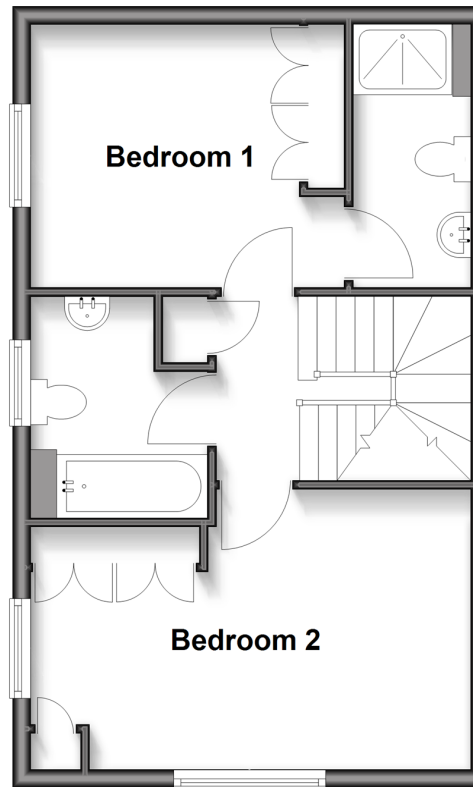
Ground Floor

Approx. 40.6 sq. metres (436.7 sq. feet)



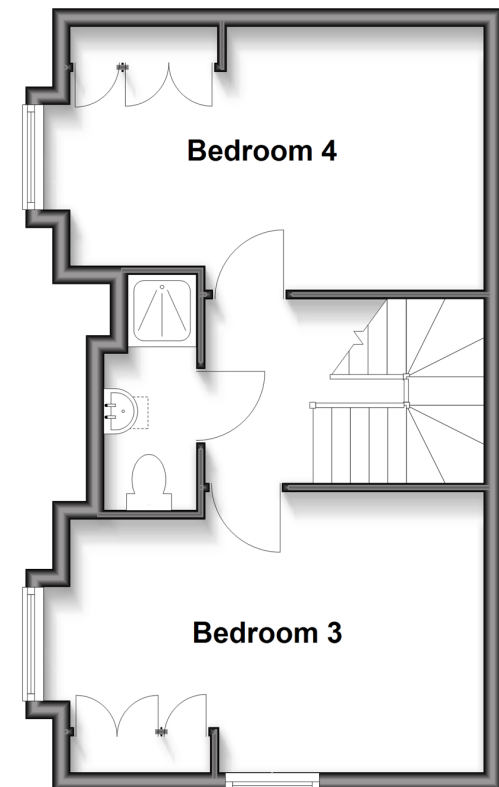
First Floor

Approx. 40.3 sq. metres (433.8 sq. feet)



Second Floor

Approx. 37.3 sq. metres (401.2 sq. feet)



Accommodation

GROUND FLOOR

Entrance Hallway

Cloakroom

Kitchen/Diner: 15'9 x 9'6 (4.80m x 2.90m)

Lounge: 16'0 x 12'3 into bay (4.88m x 3.74m)

FIRST FLOOR

Landing

Bedroom 1: 11'4 x 9'8 (3.46m x 2.95m)

En-Suite Shower Room

Bedroom 2: 16'7 x 10'2 (5.06m x 3.10m)

Bathroom

Landing

Bedroom 3: 14'11 x 9'7 (4.55m x 2.92m)

Bedroom 4: 14'11 x 10'2 (4.55m x 3.10m)

Shower Room

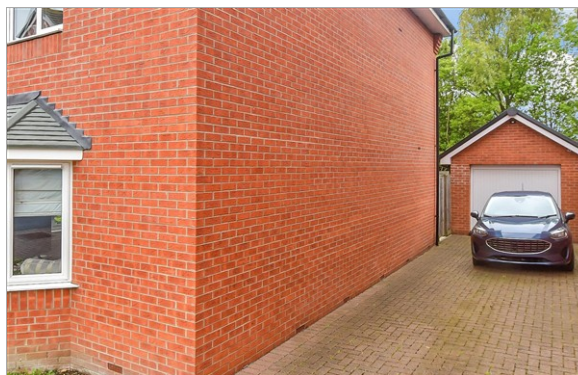
Garage

Off Street Parking

SECOND FLOOR

OUTSIDE

Front & Rear Garden



Main features

- Large bedrooms over two different levels of living
- Three wash rooms
- Separate garage with adjoining driveway
- Beautifully maintained throughout making this a wonderful family home
- Brilliant location due to local amenities, facilities and schools situated nearby.



Nearest Schools

Primary Schools: North Crescent Primary 0.1 miles, Wickford Junior School 0.3 miles, Oakfield Primary 0.5 miles

Secondary Schools: The Bromfords School 0.6 miles,



Transport Information

Train Stations: Wickford 0.4 miles, Battlesbridge 1.9 miles, Rayleigh 3.5 miles



Address

Radwinter Close, Wickford, Essex, SS12



Directions

For directions to this property please contact us.



Call Wickford Branch 01268 561287 ■ douglasallen.co.uk



- Legal advice should be taken to verify fixtures/fittings, planning, alterations and/or lease details
- Appliances & services are untested, dimensions are approximate and floor plans are not to scale
- Through a Homewise Home For Life Plan people aged 60+ can secure this property for up to 50% less, by purchasing a Lifetime Lease.



53413098/20251007/RP/AH