

# SNELLERS

ESTATE AGENTS



## The Hermitage, TW10

£515,000

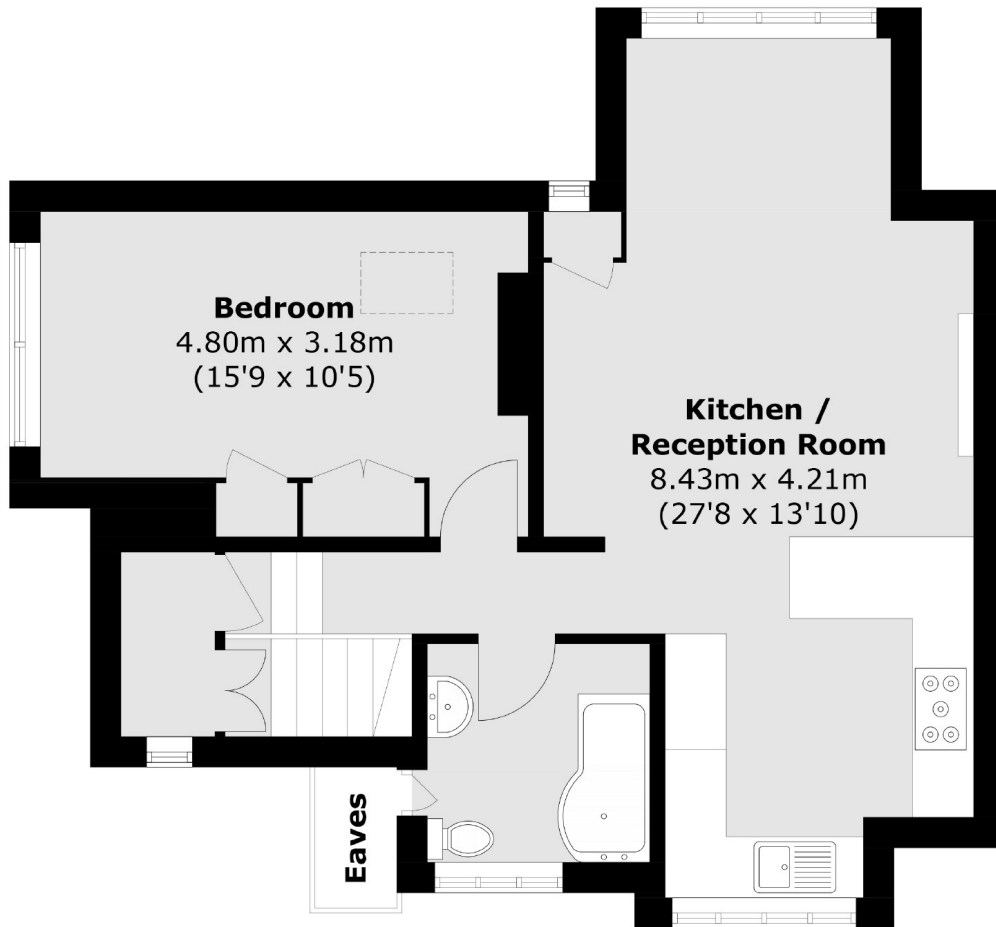
A charming top-floor character flat in an imposing Victorian house on a desirable road moments from Richmond Riverside. Within easy walk of the station, triple aspect and flooded with light, the open-plan layout extends to over 600 square feet with a feature gas fireplace and sloping eaves. Share of freehold, no onward chain and an established top-rental asset.

Where Church Terrace meets the ever-popular Hermitage, linking the lower slopes of Richmond Hill to the bustle of the town centre. Opposite is Ormond Road leading directly to Richmond Bridge and a lovely stretch of the river with many bars, restaurants, and boats.

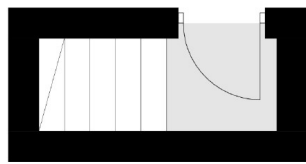
- Triple Aspect • Top Floor Flat • Close to the River •
- Share of Freehold • No Onward Chain • Recently Refurbished •

# SNELLERS

ESTATE AGENTS



**First Floor**



**Ground Floor**

Total area (approx.): 58.4 sq. m (628.6 sq. ft)  
(Excluding Eaves)

Snellers St. Margarets Sales  
36 Crown Road  
St Margarets  
TW1 3EH  
020 8892 8008  
stmargaretssales@snellers.co.uk

Energy Rating: We aim to make our particulars both accurate and reliable. However they are not guaranteed; nor do they form part of an offer or contract. If you require clarification on any points then please contact us, especially if you're traveling some distance to view. Please note that appliances and heating systems have not been tested and therefore no warranties can be given as to their good working order