

## Lynton Road, SE1

### £925,000

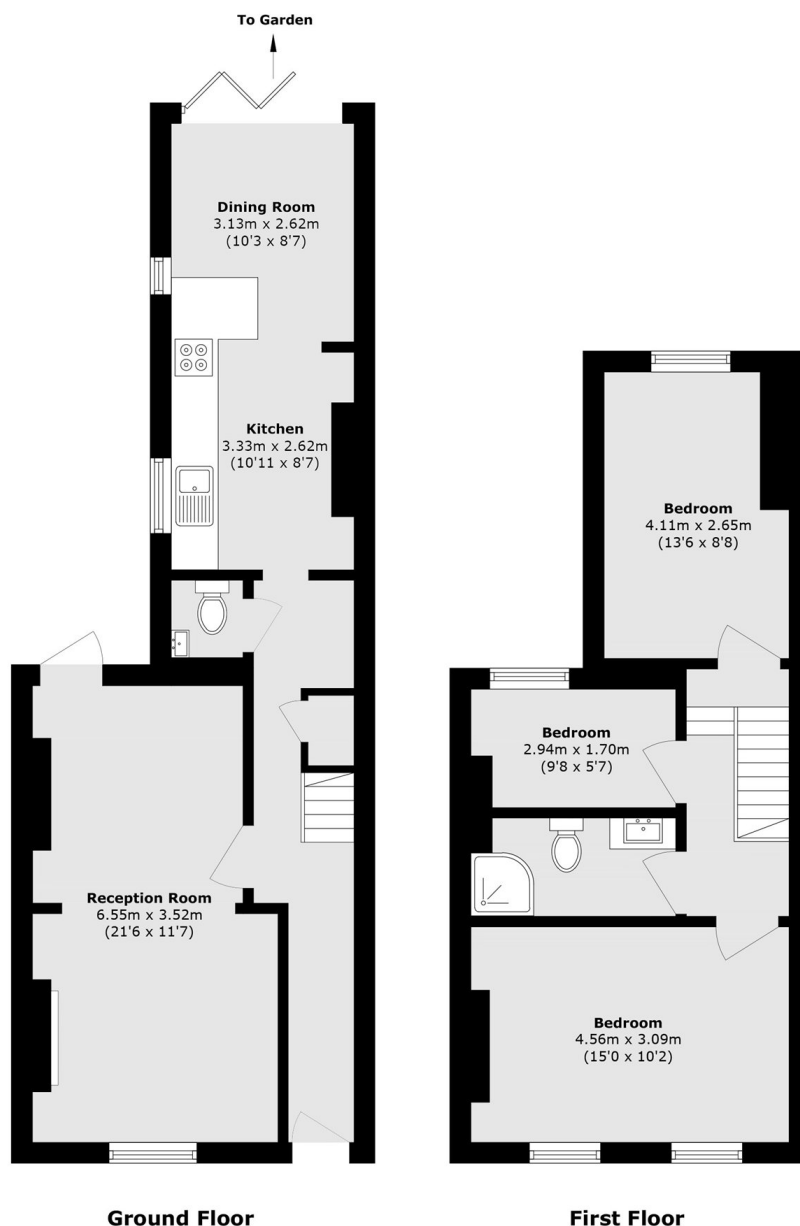
A beautifully refurbished two-storey freehold house, offering a generous double reception room, a spacious kitchen-diner, and a large rear garden. The property also comprises three bedrooms, a downstairs WC, and an upstairs family bathroom. Sold chain-free, with on-street permit parking available, this home combines contemporary living with plenty of period charm.

Lynton Road is a picturesque, tree-lined street, adjacent to the sought-after Thorburn Square Conservation Area. This peaceful residential setting offers a village-like atmosphere just moments from the heart of London with numerous cafés, restaurants and amenities on your doorstep. There are excellent transport links nearby, including the Jubilee Line at nearby Bermondsey & London Bridge, the Overground at London Bridge & South Bermondsey, plus frequent bus routes across the City.

### Features

- Fully Refurbished
- Two Storey Freehold House
- Three Bedrooms
- Private Rear Garden
- On-Street Permit Parking
- Chain Free Sale

# Lynton Road, London, SE1



Total area (approx.): 93.0 sq. m (1001.0 sq. ft)

## Dexters

London Bridge  
54 Borough High Street  
London  
SE1 1XL  
Sales  
020 7650 5 100

Energy Rating: E. We aim to make our particulars both accurate and reliable. However they are not guaranteed; nor do they form part of an offer or contract. If you require clarification on any points then please contact us, especially if you're traveling some distance to view. Please note that appliances and heating systems have not been tested and therefore no warranties can be given as to their good working order.

 **RICS** | Regulated  
Estate Agent  
and Letting Agent

[dexters.co.uk](https://www.dexters.co.uk)