

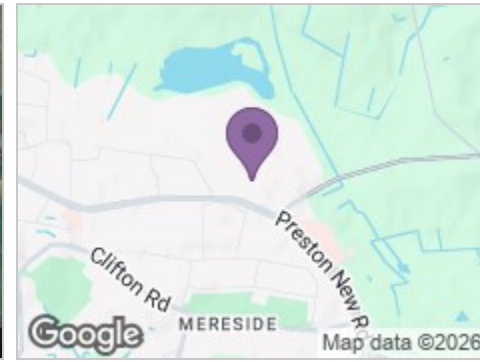
Road Map



Hybrid Map



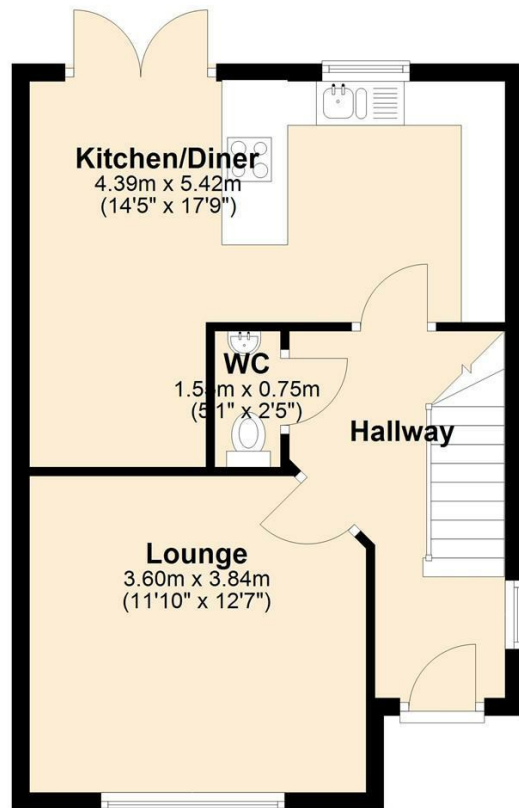
Terrain Map



Floor Plan

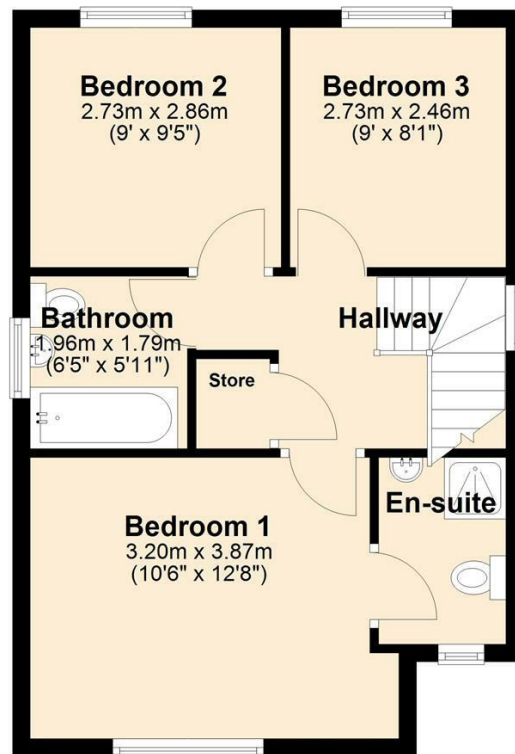
Ground Floor

Approx. 42.1 sq. metres (453.5 sq. feet)



First Floor

Approx. 42.6 sq. metres (458.1 sq. feet)



4 Bletchley Close

, Blackpool, FY4 4ZB

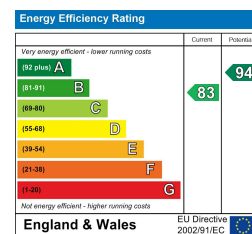
Offers In The Region Of £230,000 3 2 1 B

Viewings

Please contact our iMove Sales & Lettings Office on 01253 883311 if you wish to arrange a viewing appointment for this property or require further information.

These particulars, whilst believed to be accurate are set out as a general outline only for guidance and do not constitute any part of an offer or contract. Intending purchasers should not rely on them as statements of representation of fact, but must satisfy themselves by inspection or otherwise as to their accuracy. No person in this firm's employment has the authority to make or give any representation or warranty in respect of the property.

Energy Efficiency Graph



Make your next move with... iMove

Call us now on 01253 883311

hello@imovetoday.co.uk



# 4 Bletchley Close

, Blackpool, FY4 4ZB

Offers In The Region Of £230,000



## Hallway

UPVC double glazed window to side. Stairs to front leading to first floor landing. Access to all ground floor rooms. Under stair storage cupboard. Luxury vinyl flooring, ceiling light and radiator.

## Lounge

12'7" x 11'9"

UPVC double glazed window to front. Carpet, ceiling light and radiator.

## Kitchen/Diner

17'9" x 14'4" (at widest point)

UPVC double glazed French Doors to rear & UPVC window to rear. Range of wall and base units with complimentary worktops above. Four ring gas hob with electric extractor above. Integral double oven. Integral fridge/freezer. Plumbed for washing machine. Integral dishwasher. Luxury vinyl flooring, ceiling lights and radiator.

## Ground Floor WC

4'11" x 2'5"

Low flush WC and pedestal wash hand basin. Luxury vinyl flooring, ceiling light and radiator.

## Landing

UPVC double glazed opaque window to side. Access to all first floor rooms. Loft access. Airing cupboard. Carpet and ceiling lights.

## Bedroom One

12'8" x 10'5"

UPVC double glazed window to front. Carpet, ceiling lights and radiator. Access to En-suite.

## En-Suite

UPVC double glazed opaque window to front. Three piece bathroom suite comprising; shower unit,

pedestal wash hand basin and low flush WC. Luxury vinyl flooring, ceiling lights and chrome towel heater.

## Bedroom Two

9'4" x 8'11"

UPVC double glazed window to rear. Carpet, ceiling lights and radiator.

## Bedroom Three

8'11" x 8'0"

UPVC double glazed window to rear. Carpet, ceiling lights and radiator.

## Bathroom

6'5" x 5'10"

UPVC double glazed opaque window to side. Three piece bathroom suite comprising; panel bath, wall mounted wash hand basin and low flush WC. Luxury vinyl flooring, ceiling lights and chrome towel heater.

## Front Exterior

Driveway providing off road parking for two vehicles. Side access to rear garden

## Rear Exterior

Spacious lawned rear garden.

## Further Information

Tenure - Freehold

EPC Rating - B

Council Tax Band - D - Blackpool Borough Council

House Builder - Rowland

House Model - Charleston

